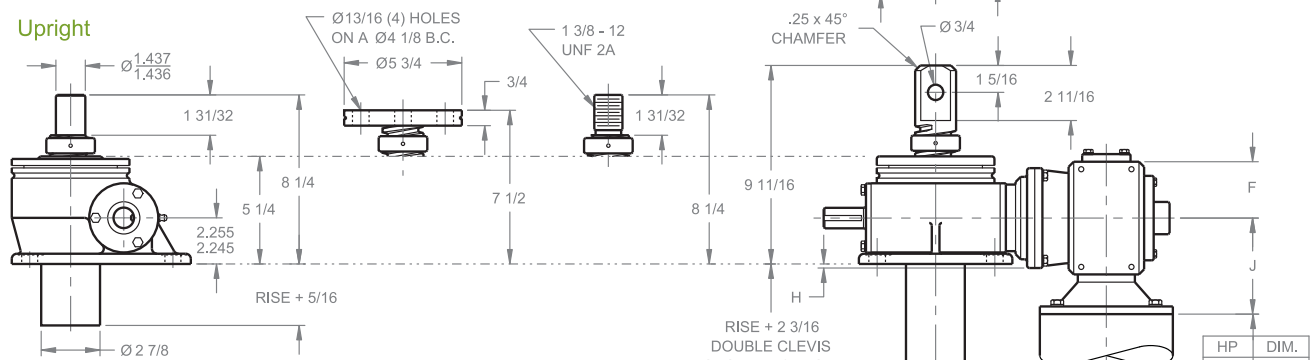


# MACHINE SCREW ComDRIVES®

## 10 TON - 2" SCREW

CD 810 / DCD 810  
CD 2410 / DCD 2410

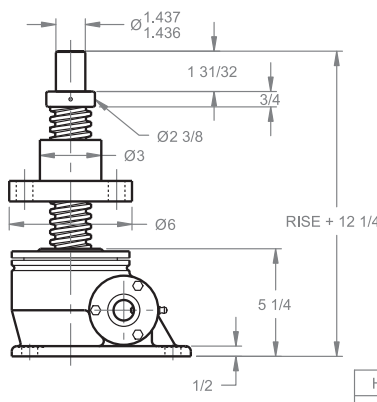
### Upright



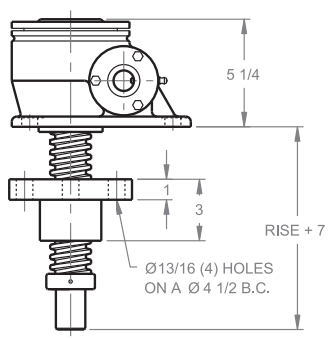
HP	DIM.
1	10 1/4
1-1/2	11 1/4
2	17 3/8
3	18 3/4

HP	DIM.
1	4 9/16
1-1/2	7 9/16
2	
3	
5	

### Upright traveling nut



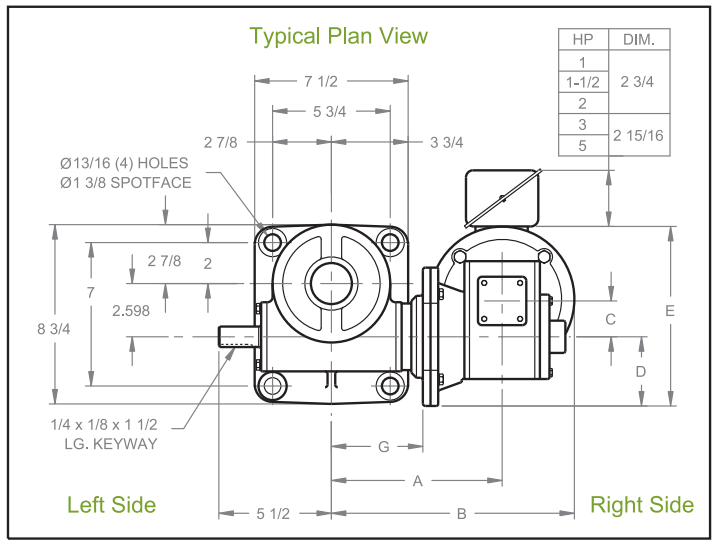
### Inverted traveling nut



REDUCER DIMENSIONS

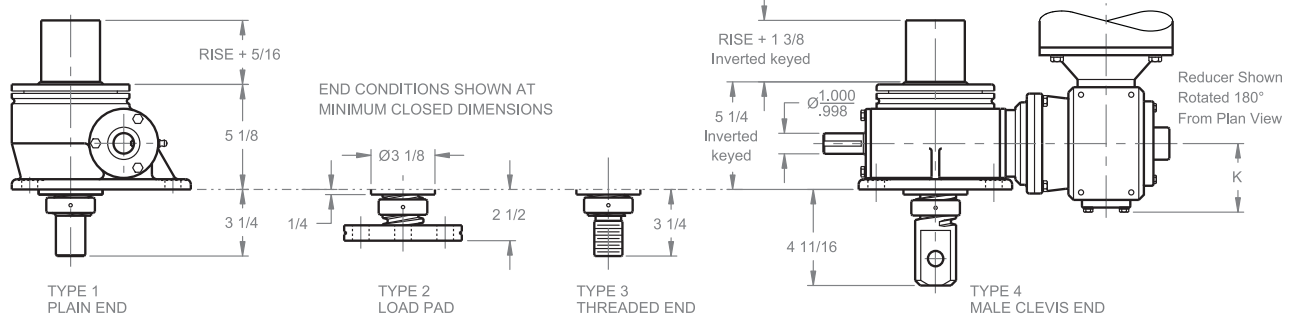
HP	1, 1 1/2, 2	3, 5
A	8 11/32	8 29/32
B	11 21/32	13 17/32
C	1 3/4	2 5/8
D	3 3/8	4 7/16
E	8 7/16	11 11/16
F	2 3/4	3 7/8
G	4 15/32	4 15/32
H	3/16	1 5/8
J	4 11/16	5 3/4
K	3 11/32	4 5/16

### Typical Plan View



HP	DIM.
1	2 3/4
1-1/2	2 3/4
2	
3	2 15/16
5	

### Inverted



NOTE: FOR LIFTING CAPACITIES SEE PAGE 49

Note: Drawings are artist's conception — not for certification; dimensions are subject to change without notice.