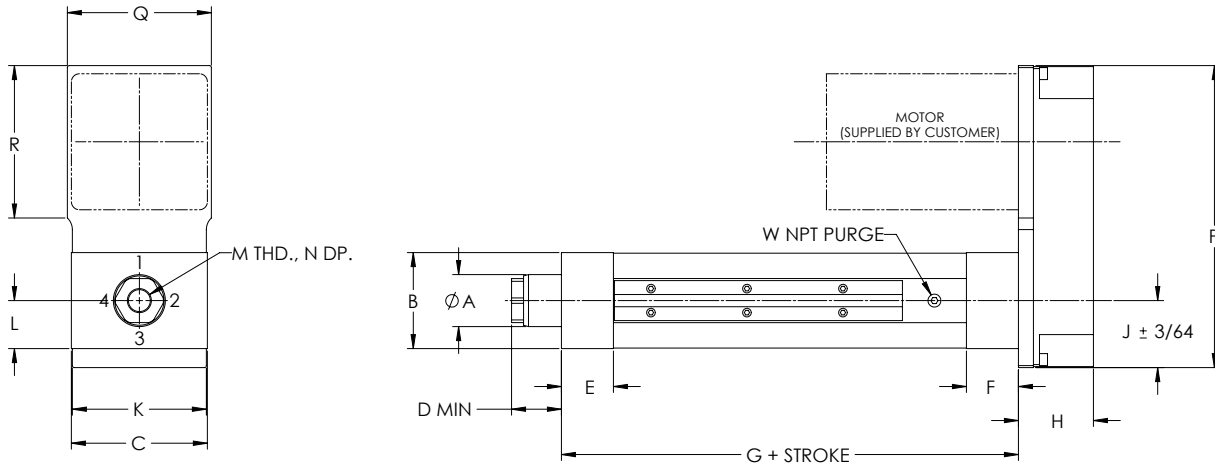


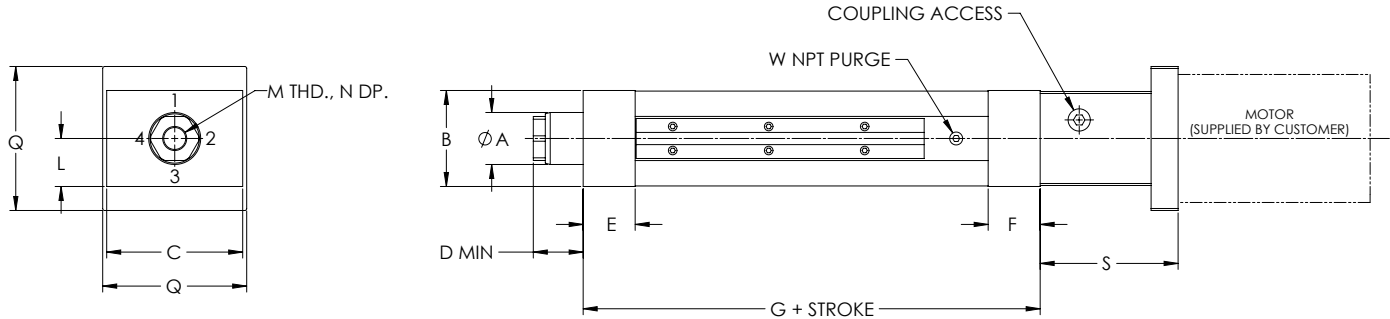
# DIMENSIONED DRAWINGS FOR THE ELIMINATOR HD ACTUATOR

Dimensions in inches

## U-Parallel Offset Motor Configuration



## L-Inline Motor Configuration



"S" length may vary depending on motor or gearbox.

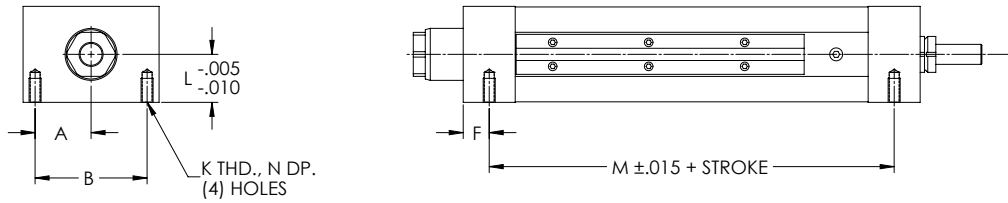
## HD U-Parallel Offset and L-Inline Motor Configuration

Model	A	B	C	D	E	F	G	H	J	K	L	M	N	P	Q	R	S	W
HD201	1.13	2.00	3.00	1.04	1.00	1.00	5.59	1.63	1.48	2.97	1.00	1/2-20	1.00	6.30	2.97	N/A	2.66	1/8
HD302	1.63	3.00	4.25	1.41	1.63	1.63	8.28	2.34	2.09	4.19	1.50	3/4-16	1.00	9.44	4.50	4.75	4.31	1/8
HD304	1.63	3.00	4.25	1.56	1.63	1.63	8.28	2.34	2.09	4.19	1.50	3/4-16	1.00	9.44	4.50	4.75	4.31	1/8
HD404	2.25	4.00	5.50	1.88	2.00	2.00	9.59	2.63	2.69	5.38	2.00	3/4-16	1.00	13.00	6.00	6.94	5.00	1/4
HD406	2.25	4.00	5.50	1.79	2.00	2.00	9.59	2.63	2.69	5.38	2.00	3/4-16	1.00	13.00	6.00	6.94	5.00	1/4
HD508	3.00	5.00	7.75	2.56	2.50	3.00	13.38	4.03	3.81	7.63	2.50	1 1/4-12	1.63	17.19	8.38	9.19	6.75	3/8
HD516	3.00	5.00	7.75	2.56	2.50	3.00	13.38	4.03	3.81	7.63	2.50	1 1/4-12	1.63	17.19	8.38	9.19	6.75	3/8
HD618	3.50	6.00	8.50	2.75	3.00	3.00	14.00	4.13	4.13	8.38	3.00	1 1/4-12	1.63	17.88	9.00	9.19	7.25	1/2
HD625	4.00	6.00	8.50	2.75	3.00	3.00	16.75	4.13	4.13	8.38	3.00	1 1/4-12	1.63	17.88	9.00	9.19	7.25	1/2

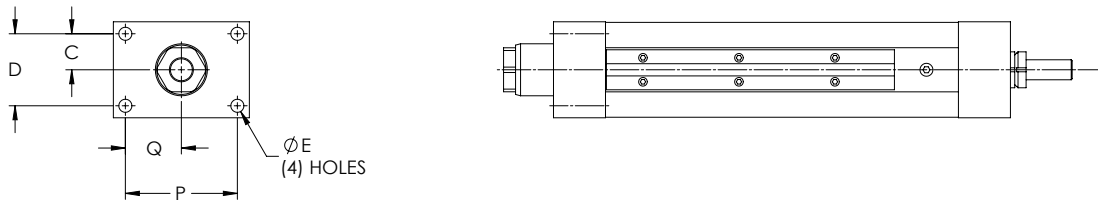
# DIMENSIONED DRAWINGS FOR THE ELIMINATOR HD ACTUATOR

Dimensions in inches

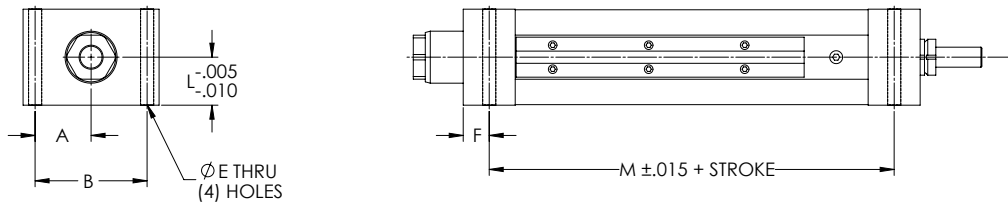
## Bottom Mount Dimensions



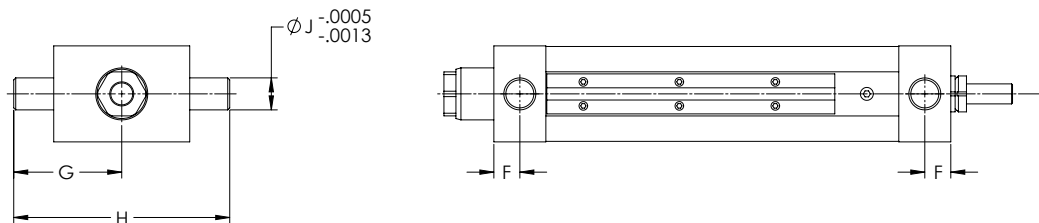
## Front Flange Dimensions



## Foot Mount Dimensions



## Trunnion Mount Dimensions



## HD Mounting Dimensions (Bottom Mount, Front Flange, Foot Mount, Trunnion Mount)

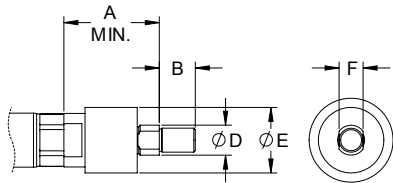
Model	A	B	C	D	E	F	G	H	J	K	L	M	N	P	Q
HD201	1.13	2.25	0.69	1.38	0.34	0.49	2.24	4.48	0.50	5/16-18	0.99	8.61	0.63	2.38	1.19
HD302	1.75	3.50	1.13	2.25	0.41	0.81	3.38	6.75	1.00	3/8-16	1.50	6.66	0.75	3.50	1.75
HD304	1.75	3.50	1.13	2.25	0.41	0.81	3.38	6.75	1.00	3/8-16	1.50	6.66	0.75	3.50	1.75
HD404	2.19	4.38	1.44	2.88	0.69	1.00	4.50	9.00	1.25	5/8-11	2.00	7.59	1.00	4.38	2.19
HD406	2.19	4.38	1.44	2.88	0.69	1.00	4.50	9.00	1.25	5/8-11	2.00	7.59	1.00	4.38	2.19
HD508	3.13	6.25	1.75	3.50	0.81	1.25	6.25	12.50	1.50	3/4-10	2.50	10.63	1.25	6.25	3.13
HD516	3.13	6.25	1.75	3.50	0.81	1.25	6.25	12.50	1.50	3/4-10	2.50	10.63	1.25	6.25	3.13
HD618	3.31	6.63	2.00	4.00	1.06	1.50	7.13	14.25	2.00	1-8	3.00	11.00	1.63	6.63	3.31
HD625	3.31	6.63	2.00	4.00	1.06	1.50	7.13	14.25	2.00	1-8	3.00	13.75	1.63	6.63	3.31

# DIMENSIONED DRAWINGS FOR THE ELIMINATOR HD ACTUATOR

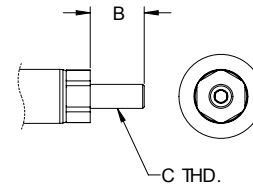
Dimensions in inches

## Rod End Options

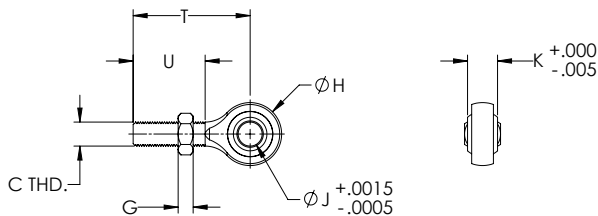
### Self-Aligning Coupler



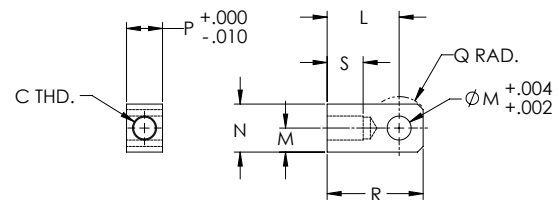
### Male Thread



### Spherical Rod Eye



### Female Eye



## HD Rod End Dimensions

Model	A	B	C	D	E	F	G	H	J	K	L	M	N	P	Q	R	S	T	U
HD201	2.00	0.75	1/2-20	0.63	1.37	0.50	0.31	1.31	0.50	0.63	1.50	0.50	1.00	0.75	0.50	2.00	0.75	2.44	1.50
HD302	2.31	1.13	3/4-16	0.97	2.00	0.75	0.42	1.75	0.75	0.88	2.06	0.75	1.50	1.25	0.75	2.81	1.13	2.88	1.75
HD304	2.31	1.13	3/4-16	0.97	2.00	0.75	0.42	1.75	0.75	0.88	2.06	0.75	1.50	1.25	0.75	2.81	1.13	2.88	1.75
HD404	2.31	1.13	3/4-16	0.97	2.00	0.75	0.42	1.75	0.75	0.88	2.06	0.75	1.50	1.25	0.75	2.81	1.13	2.88	1.75
HD406	2.31	1.13	3/4-16	0.97	2.00	0.75	0.42	1.75	0.75	0.88	2.06	0.75	1.50	1.25	0.75	2.81	1.13	2.88	1.75
HD508	2.94	1.63	1 1/4-12	1.45	3.13	1.25	0.72	2.75	1.00	1.38	3.44	1.38	2.75	2.00	1.38	4.81	2.00	4.13	2.13
HD516	2.94	1.63	1 1/4-12	1.45	3.13	1.25	0.72	2.75	1.00	1.38	3.44	1.38	2.75	2.00	1.38	4.81	2.00	4.13	2.13
HD618	2.94	1.63	1 1/4-12	1.45	3.13	1.25	0.72	2.75	1.00	1.38	3.44	1.38	2.75	2.00	1.38	4.81	2.00	4.13	2.13
HD625	2.94	1.63	1 1/4-12	1.45	3.13	1.25	0.72	2.75	1.00	1.38	3.44	1.38	2.75	2.00	1.38	4.81	2.00	4.13	2.13