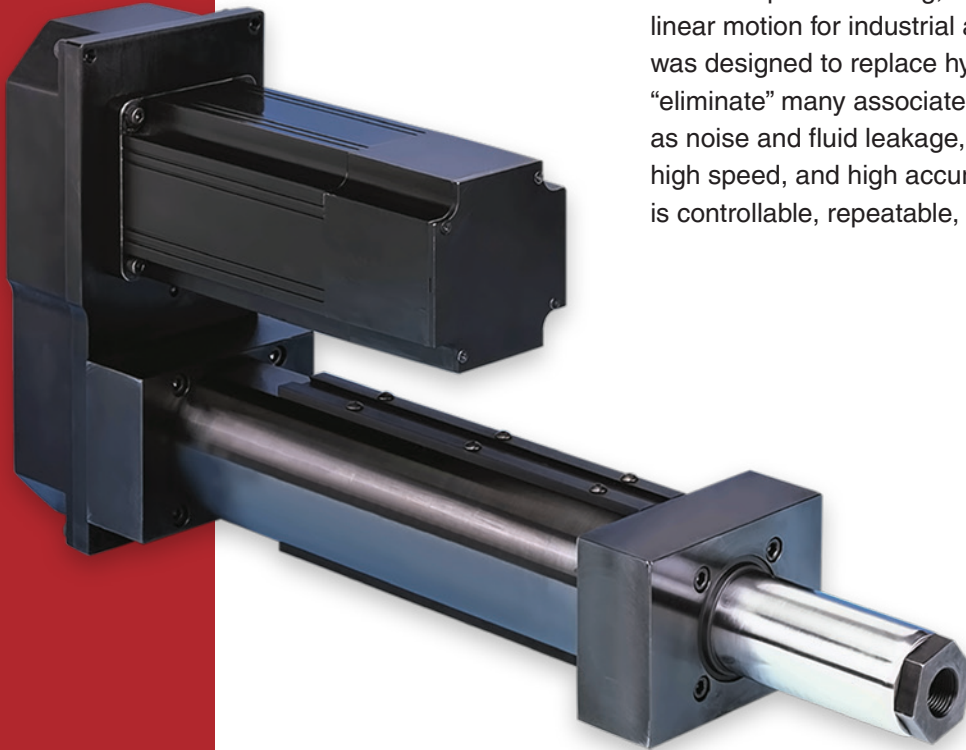


Eliminator HD™ Actuator

HEAVY DUTY, HIGH SPEED, HIGH FORCE, HIGH PRECISION

The Eliminator HD and HDL series Heavy Duty linear actuators provide strong, durable, and precise linear motion for industrial automation. The HD was designed to replace hydraulic actuators and thus “eliminate” many associated concerns, such as noise and fluid leakage, while providing high load, high speed, and high accuracy linear motion that is controllable, repeatable, and easy to adjust.



Ideal for a Variety of Applications Including:

- Pressing / Punching
- Material Handling
- Metal Forming
- Parts Clamping
- Assembly
- Heat Staking
- Hydraulic Replacement
- And More

Key Features:

- Rugged steel construction with durable anti-rotation feature
- Rated thrust up to 25,000 lbf
- High velocity up to 20 in/sec, stroke up to 48 inches
- 0.002 in/ft standard lead accuracy, 0.0005 in/ft optional lead accuracy
- Integrated load cell option provides continuous bi-directional measurement of applied loads (HDL model)

SPECIFICATION CHART FOR THE ELIMINATOR HD ACTUATOR

Model Number	Thrust Load Rated	Linear Velocity Max. ¹	Travel Length Max. ²	Frame Size	Lead	Ball Screw Diameter	Ball Screw Max. ¹	Torque @ Ball Screw Max.	Dynamic Capacity Per Million Revs	Dynamic Capacity Per Million Inches	Motor Gearhead Frame Supported Max. ²
	lb	in/s	in	in	mm	mm	RPM	in-lb	lb	lb	in
HD201	1,000	8.0	12	2.00	4	16	3,048	28	1,529	825	2.75
HD302	2,000	20.0	36	3.00	10	25	3,048	139	6,490	4,760	4.25
HD304	4,000	20.0	36	3.00	10	25	3,048	278	6,490	4,760	4.25
HD404	4,000	18.0	42	4.00	10	32	2,743	278	14,580	10,690	5.75
HD406	6,000	18.0	42	4.00	10	32	2,743	418	14,580	10,690	5.75
HD508	8,000	14.0	48	5.00	12	50	1,778	668	31,250	24,340	8.00
HD516	16,000	14.0	48	5.00	12	50	1,778	1,337	31,250	24,340	8.00
HD618	18,000	9.8	48	6.00	12	63	1,245	1,504	35,750	27,840	8.00
HD625	25,000	14.4	48	6.00	20	80	1,097	3,481	52,150	48,160	8.00

Model Number	Inertia 1:1 Zero Stroke ³	Inertia 1:1 Per Inch of Stroke ³	Inertia 2:1 Zero Stroke ³	Inertia 2:1 Per Inch of Stroke ³	Inertia Inline Zero Stroke ³	Inertia Inline Per Inch of Stroke ³	Unit Weight "U" Motor Mount ⁴	Unit Weight "L" Motor Mount ⁴	Weight Per Inch of Stroke ⁴
	lb-in ²	lb-in ²	lb-in ²	lb-in ²	lb-in ²	lb-in ²	lb	lb	lb
HD201	0.51	0.0031	0.27	0.0008	0.04	0.0031	8	6	0.87
HD302	4.31	0.0212	1.64	0.0053	0.34	0.0212	29	22	1.33
HD304	4.87	0.0212	1.46	0.0053	0.38	0.0212	29	22	1.33
HD404	23.24	0.0457	4.11	0.0114	1.99	0.0457	63	49	2.25
HD406	23.24	0.0457	4.11	0.0114	1.99	0.0457	63	49	2.25
HD508	139.27	0.2688	22.66	0.0672	5.92	0.2688	155	105	3.40
HD516	139.36	0.2688	22.68	0.0672	6.00	0.2688	155	105	3.40
HD618	281.96	0.7361	43.91	0.1840	12.31	0.7361	207	152	5.50
HD625	295.02	1.8713	47.17	0.4678	25.37	1.8713	214	158	5.50

¹ Maximum velocity and maximum screw speed may not be achievable at maximum stroke.

² Larger Motor or Gearhead Frames and longer stroke lengths are available upon request.

³ All inertia values are at the input shaft and are representative of typical pulleys, bushings, couplers, etc. Actual values may vary due to motor selection.

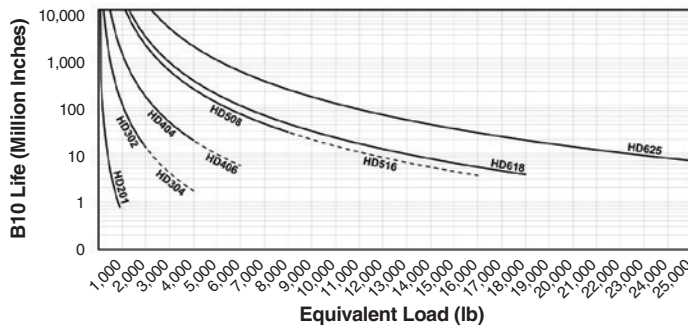
⁴ Weight values are for reference only and vary depending on configuration.

"U" Parallel offset configuration

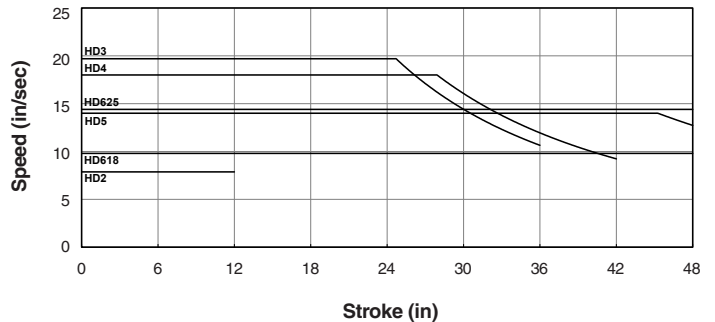
"L" Inline configuration

DATA CURVES FOR THE ELIMINATOR HD ACTUATOR

Dynamic Capacity: Life Vs. Load



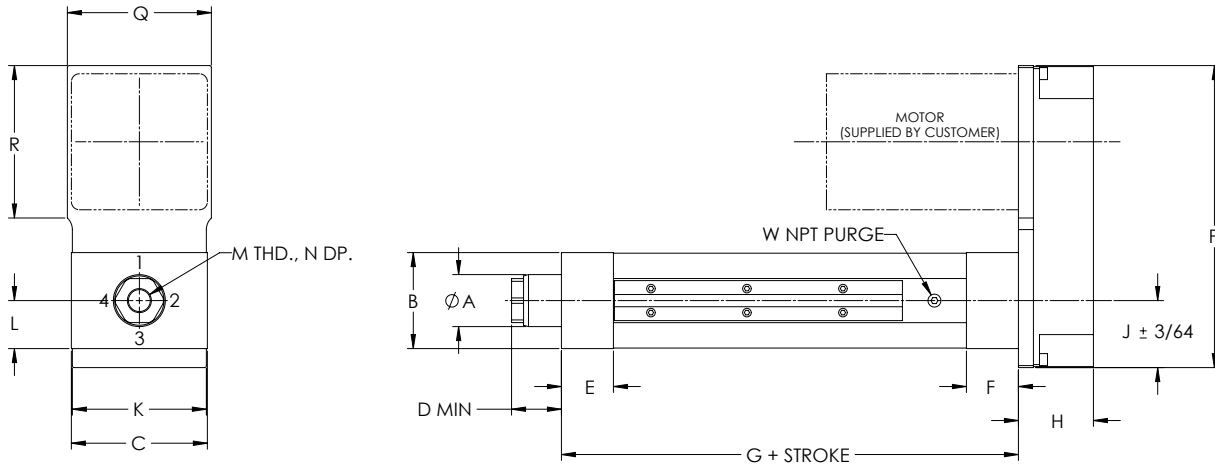
Dynamic Capacity: Speed Vs. Stroke



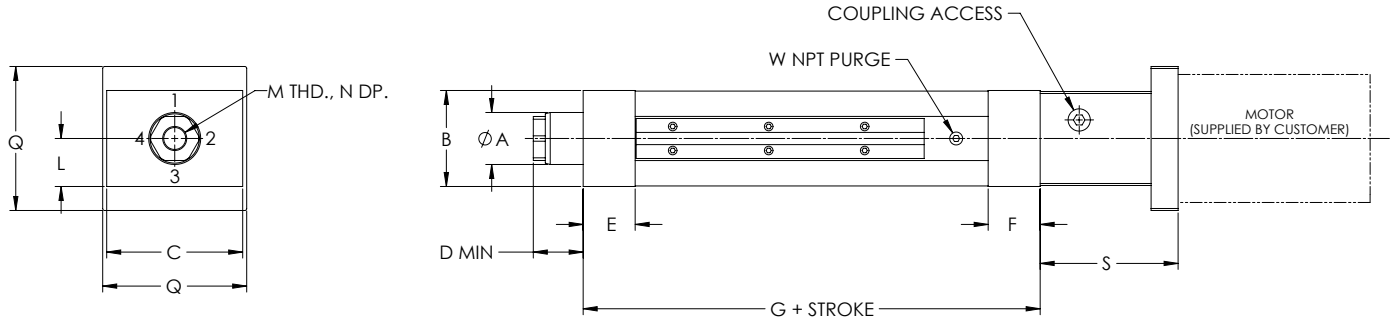
DIMENSIONED DRAWINGS FOR THE ELIMINATOR HD ACTUATOR

Dimensions in inches

U-Parallel Offset Motor Configuration



L-Inline Motor Configuration



"S" length may vary depending on motor or gearbox.

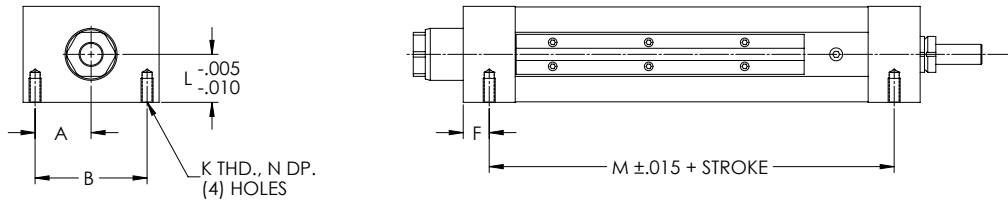
HD U-Parallel Offset and L-Inline Motor Configuration

Model	A	B	C	D	E	F	G	H	J	K	L	M	N	P	Q	R	S	W
HD201	1.13	2.00	3.00	1.04	1.00	1.00	5.59	1.63	1.48	2.97	1.00	1/2-20	1.00	6.30	2.97	N/A	2.66	1/8
HD302	1.63	3.00	4.25	1.41	1.63	1.63	8.28	2.34	2.09	4.19	1.50	3/4-16	1.00	9.44	4.50	4.75	4.31	1/8
HD304	1.63	3.00	4.25	1.56	1.63	1.63	8.28	2.34	2.09	4.19	1.50	3/4-16	1.00	9.44	4.50	4.75	4.31	1/8
HD404	2.25	4.00	5.50	1.88	2.00	2.00	9.59	2.63	2.69	5.38	2.00	3/4-16	1.00	13.00	6.00	6.94	5.00	1/4
HD406	2.25	4.00	5.50	1.79	2.00	2.00	9.59	2.63	2.69	5.38	2.00	3/4-16	1.00	13.00	6.00	6.94	5.00	1/4
HD508	3.00	5.00	7.75	2.56	2.50	3.00	13.38	4.03	3.81	7.63	2.50	1 1/4-12	1.63	17.19	8.38	9.19	6.75	3/8
HD516	3.00	5.00	7.75	2.56	2.50	3.00	13.38	4.03	3.81	7.63	2.50	1 1/4-12	1.63	17.19	8.38	9.19	6.75	3/8
HD618	3.50	6.00	8.50	2.75	3.00	3.00	14.00	4.13	4.13	8.38	3.00	1 1/4-12	1.63	17.88	9.00	9.19	7.25	1/2
HD625	4.00	6.00	8.50	2.75	3.00	3.00	16.75	4.13	4.13	8.38	3.00	1 1/4-12	1.63	17.88	9.00	9.19	7.25	1/2

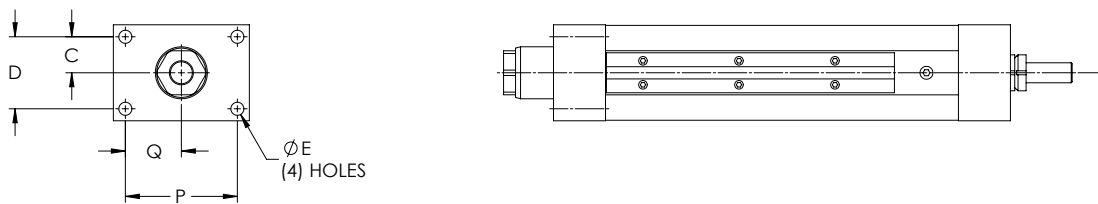
DIMENSIONED DRAWINGS FOR THE ELIMINATOR HD ACTUATOR

Dimensions in inches

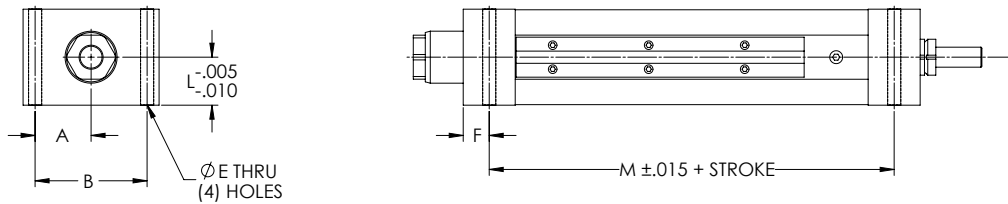
Bottom Mount Dimensions



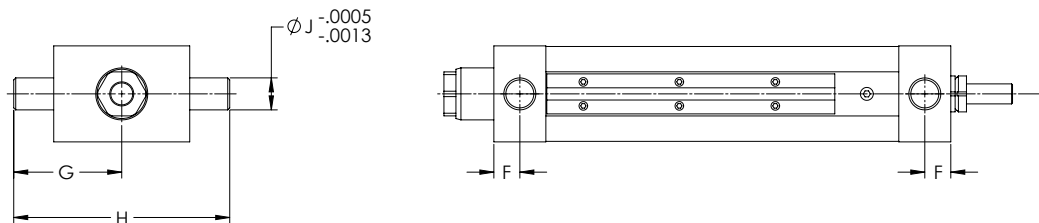
Front Flange Dimensions



Foot Mount Dimensions



Trunnion Mount Dimensions



HD Mounting Dimensions (Bottom Mount, Front Flange, Foot Mount, Trunnion Mount)

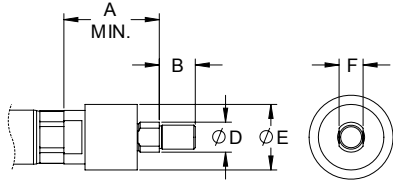
Model	A	B	C	D	E	F	G	H	J	K	L	M	N	P	Q
HD201	1.13	2.25	0.69	1.38	0.34	0.49	2.24	4.48	0.50	5/16-18	0.99	8.61	0.63	2.38	1.19
HD302	1.75	3.50	1.13	2.25	0.41	0.81	3.38	6.75	1.00	3/8-16	1.50	6.66	0.75	3.50	1.75
HD304	1.75	3.50	1.13	2.25	0.41	0.81	3.38	6.75	1.00	3/8-16	1.50	6.66	0.75	3.50	1.75
HD404	2.19	4.38	1.44	2.88	0.69	1.00	4.50	9.00	1.25	5/8-11	2.00	7.59	1.00	4.38	2.19
HD406	2.19	4.38	1.44	2.88	0.69	1.00	4.50	9.00	1.25	5/8-11	2.00	7.59	1.00	4.38	2.19
HD508	3.13	6.25	1.75	3.50	0.81	1.25	6.25	12.50	1.50	3/4-10	2.50	10.63	1.25	6.25	3.13
HD516	3.13	6.25	1.75	3.50	0.81	1.25	6.25	12.50	1.50	3/4-10	2.50	10.63	1.25	6.25	3.13
HD618	3.31	6.63	2.00	4.00	1.06	1.50	7.13	14.25	2.00	1-8	3.00	11.00	1.63	6.63	3.31
HD625	3.31	6.63	2.00	4.00	1.06	1.50	7.13	14.25	2.00	1-8	3.00	13.75	1.63	6.63	3.31

DIMENSIONED DRAWINGS FOR THE ELIMINATOR HD ACTUATOR

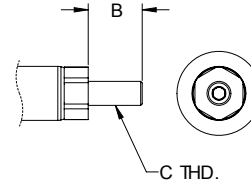
Dimensions in inches

Rod End Options

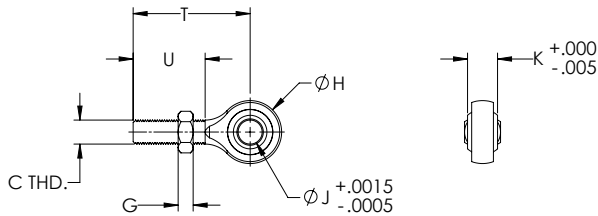
Self-Aligning Coupler



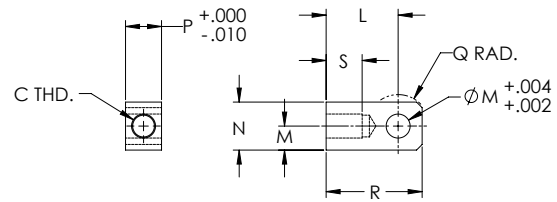
Male Thread



Spherical Rod Eye



Female Eye



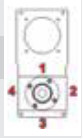
HD Rod End Dimensions

Model	A	B	C	D	E	F	G	H	J	K	L	M	N	P	Q	R	S	T	U
HD201	2.00	0.75	1/2-20	0.63	1.37	0.50	0.31	1.31	0.50	0.63	1.50	0.50	1.00	0.75	0.50	2.00	0.75	2.44	1.50
HD302	2.31	1.13	3/4-16	0.97	2.00	0.75	0.42	1.75	0.75	0.88	2.06	0.75	1.50	1.25	0.75	2.81	1.13	2.88	1.75
HD304	2.31	1.13	3/4-16	0.97	2.00	0.75	0.42	1.75	0.75	0.88	2.06	0.75	1.50	1.25	0.75	2.81	1.13	2.88	1.75
HD404	2.31	1.13	3/4-16	0.97	2.00	0.75	0.42	1.75	0.75	0.88	2.06	0.75	1.50	1.25	0.75	2.81	1.13	2.88	1.75
HD406	2.31	1.13	3/4-16	0.97	2.00	0.75	0.42	1.75	0.75	0.88	2.06	0.75	1.50	1.25	0.75	2.81	1.13	2.88	1.75
HD508	2.94	1.63	1 1/4-12	1.45	3.13	1.25	0.72	2.75	1.00	1.38	3.44	1.38	2.75	2.00	1.38	4.81	2.00	4.13	2.13
HD516	2.94	1.63	1 1/4-12	1.45	3.13	1.25	0.72	2.75	1.00	1.38	3.44	1.38	2.75	2.00	1.38	4.81	2.00	4.13	2.13
HD618	2.94	1.63	1 1/4-12	1.45	3.13	1.25	0.72	2.75	1.00	1.38	3.44	1.38	2.75	2.00	1.38	4.81	2.00	4.13	2.13
HD625	2.94	1.63	1 1/4-12	1.45	3.13	1.25	0.72	2.75	1.00	1.38	3.44	1.38	2.75	2.00	1.38	4.81	2.00	4.13	2.13

ORDERING GUIDE FOR THE ELIMINATOR HD ACTUATOR

Ordering Information

H	D				-			-			-			-					-	
----------	----------	--	--	--	---	--	--	---	--	--	---	--	--	---	--	--	--	--	---	--

Base No. (Capacity) HD201 (1,000 lbf) HD302 (2,000 lbf) HD304 (4,000 lbf) HD404 (4,000 lbf) HD406 (6,000 lbf) HD508 (8,000 lbf) HD516 (16,000 lbf) HD518 (18,000 lbf) HD625 (25,000 lbf)	Unit Mounting Option MB: Bottom Mount FF: Front Flange MF: Foot Mount TF: Front Trunnion TR: Rear Trunnion	Motor Position 1, 2, 3, 4 0 = In-Line 	Precision/Lead Accuracy** A: .002 in/ft Zero Backlash B: .0005 in/ft Zero Backlash X: Standard
Std. Stroke Length* 06: 6 in. 12: 12 in. 18: 18 in. 24: 24 in. 30: 30 in. 36: 36 in. 42: 42 in. 48: 48 in.	Rod End Option E: Female Eye F: Female Thread A: Self-Aligning Coupler M: Male Thread S: Spherical Rod Eye	Gearbelt Reduction 00: In-Line/Direct Coupled 10: 1:1 20: 2:1	N.C. Switch Qty 0, 1, 2, 3, etc.
	Configuration L: In-Line U: Parallel Offset	Switch Type A: Hall Sourcing PNP B: Hall Sinking NPN C: Reed D: Switch Track / No Switches X: Solid Cover / No Switches	N.O. Switch Qty 0, 1, 2, 3, etc.

For custom stroke lengths, contact EDrive.

* HD201 is available with stroke lengths up to 12 in.
 HD302 – HD304 are available with stroke lengths up to 36 in.
 HD404 – HD406 are available with stroke lengths up to 42 in.
 HD508 – HD625 are available with stroke lengths up to 48 in.
 ** HD201 – Std. Precision/Lead Accuracy is 0.0005 in/ft, Zero Backlash
 ** HD302, HD404 – Zero Backlash not available