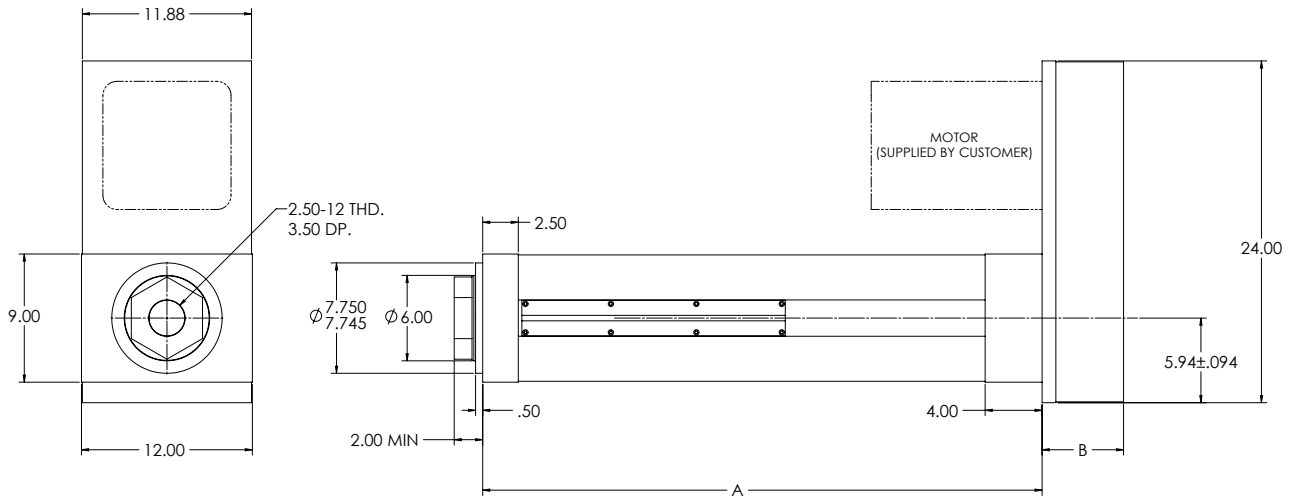


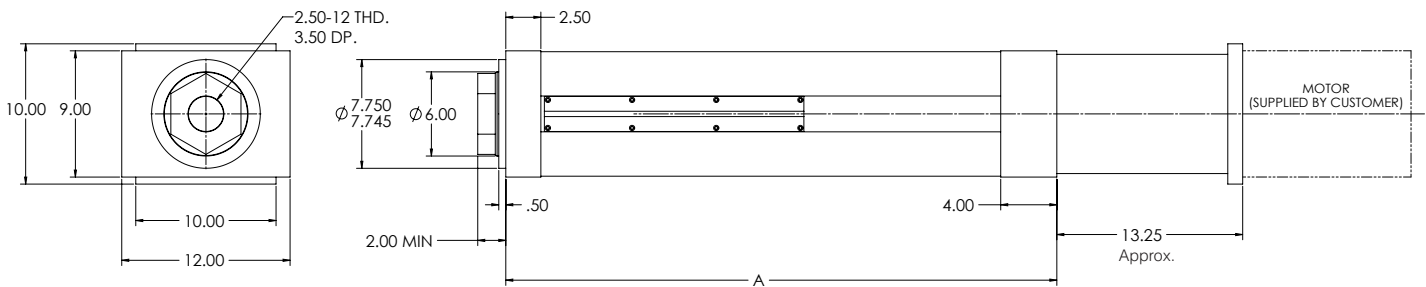
# DIMENSIONED DRAWINGS FOR THE ELIMINATOR SD ACTUATOR

Dimensions in inches

## U-Parallel Offset Motor Configuration



## L-Inline Motor Configuration



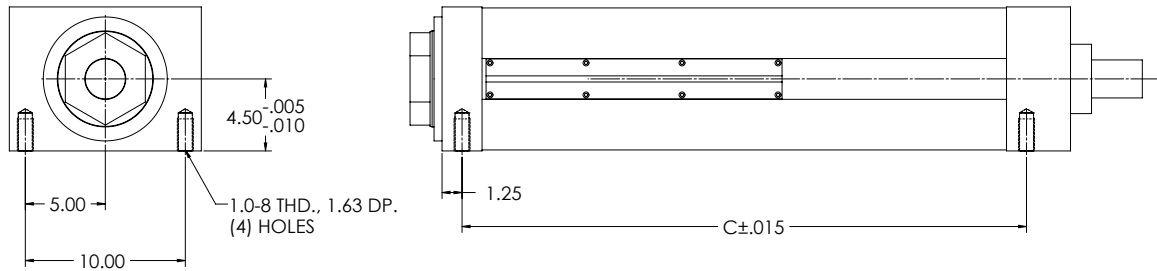
## SD U-Parallel Offset and L-Inline Motor Configuration

Model	A	B
SD930	27.28	5.72
SD948	27.28	5.72
SD966	27.28	5.72
SD999	29.88	6.22

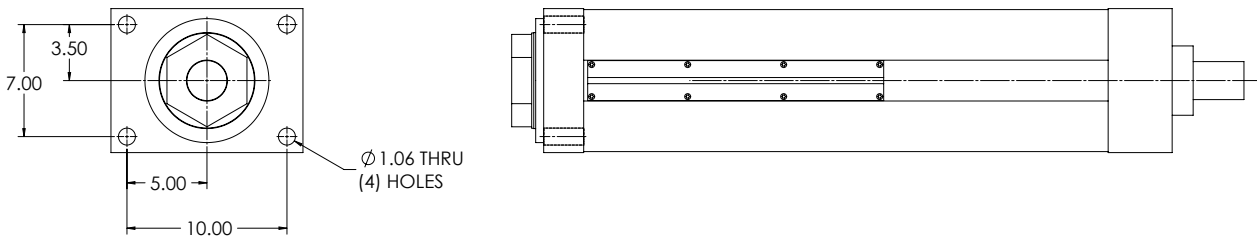
# DIMENSIONED DRAWINGS FOR THE ELIMINATOR SD ACTUATOR

Dimensions in inches

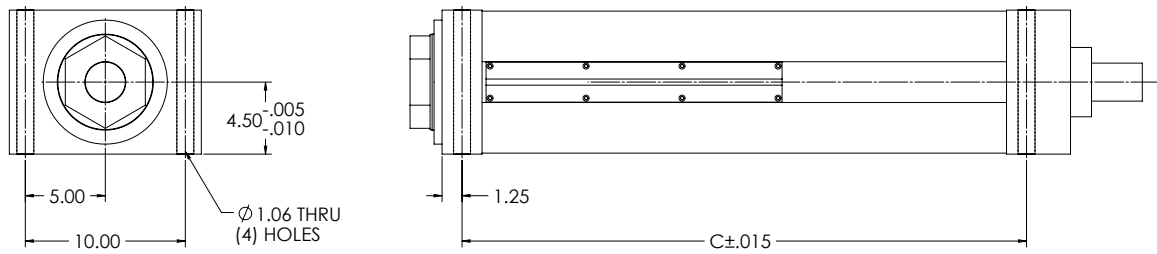
## Bottom Mount Dimensions



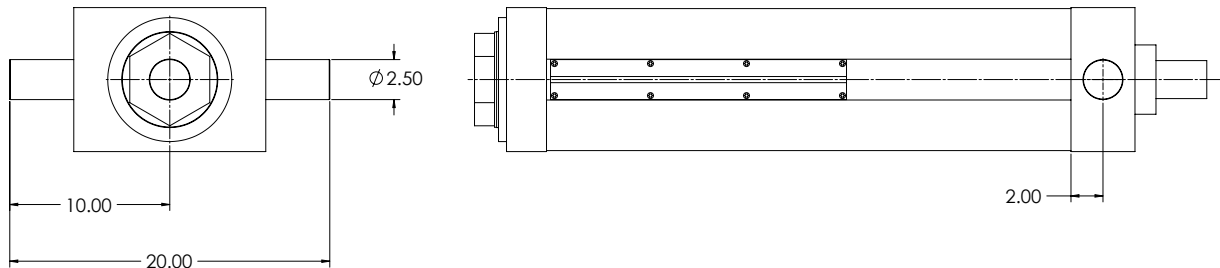
## Front Flange Dimensions



## Foot Mount Dimensions



## Trunnion Mount Dimensions



## SD Mounting Dimensions (Bottom Mount, Front Flange, Foot Mount, Trunnion Mount)

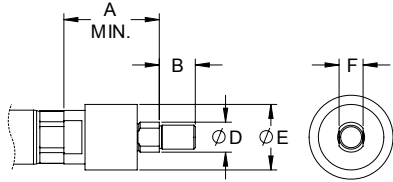
Model	C
SD930	23.28
SD948	23.28
SD966	23.28
SD999	25.88

# DIMENSIONED DRAWINGS FOR THE ELIMINATOR SD ACTUATOR

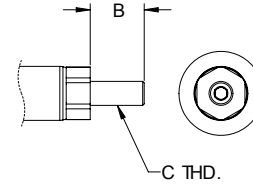
Dimensions in inches

## Rod End Options

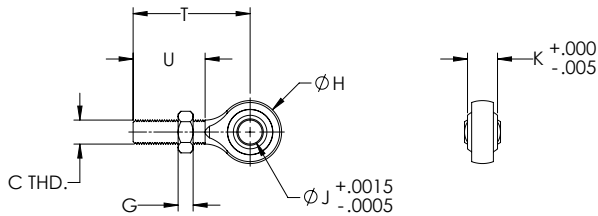
### Self-Aligning Coupler



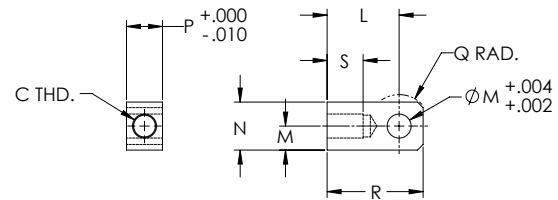
### Male Thread



### Spherical Rod Eye



### Female Eye



## SD Rod End Dimensions

Model	A	B	C	D	E	F	G	H	J	K	L	M	N	P	Q	R	S	T	U
SD930	6.50	3.50	2 1/2-12	3.25	7.00	2.88	1.72	5.00	2.00	1.75	6.13	3.00	6.00	3.00	3.25	9.13	3.50	4.63	2-12
SD948	6.50	3.50	3 1/2-12	3.25	7.00	2.88	1.72	5.00	2.00	1.75	6.13	3.00	6.00	3.00	3.25	9.13	3.50	4.63	2-12
SD966	6.50	3.50	4 1/2-12	3.25	7.00	2.88	1.72	5.00	2.00	1.75	6.13	3.00	6.00	3.00	3.25	9.13	3.50	4.63	2-12
SD999	6.50	3.50	5 1/2-12	3.25	7.00	2.88	1.72	5.00	2.00	1.75	6.13	3.00	6.00	3.00	3.25	9.13	3.50	4.63	2-12