

# Eliminator SD™ Actuator

## EXTREME THRUST CAPABILITY IN ELIMINATOR HD PLATFORM

The Eliminator SD super duty linear actuator provides extreme thrust capacity for your high thrust industrial applications. Achieve the perfect high precision/high load capacity solution when you combine your servomotor with this heavy-duty steel actuator.



### *Ideal for a Variety of Applications Including:*

- Heavy Pressing / Punching / Staking
- Heavy Lifting
- Riveting / Fastening
- Cycle Testing
- Clamping / Stamping
- Hydraulic Replacement
- And More

### **Key Features:**

- Rugged steel construction with durable anti-rotation feature
- Extreme thrust capacity up to 100,000 lbf
- Velocity up to 12 in/sec, stroke up to 48 inches
- Combines with your servomotor to achieve the perfect high precision/high load capacity

# SPECIFICATION CHART FOR THE ELIMINATOR SD ACTUATOR

Model Number	Thrust Load Rated	Linear Velocity Max. <sup>1</sup>	Travel Length Max. <sup>2</sup>	Frame Size	Lead	Ball Screw Diameter	Ball Screw Max. <sup>1</sup>	Torque @ Ball Screw Max.	Dynamic Capacity Per Million Revs	Dynamic Capacity Per Million Inches	Motor Gearhead Frame Supported Max. <sup>2</sup>
	lbr	in/s	in	in	in	in	RPM	in-lb	lbr	lbr	in
SD930	30,000	12.0	48	9.00	1.000	4.00	720	5,300	68,450	68,450	12
SD948	48,000	12.0	48	9.00	1.000	4.00	720	8,490	76,390	76,390	12
SD966	66,000	12.0	48	9.00	1.000	4.00	720	11,670	84,900	84,900	12
SD999	100,000	12.0	48	9.00	1.000	4.00	720	17,684	84,900	84,900	12

Model Number	Inertia 1:1 Zero Stroke <sup>3</sup>	Inertia 1:1 Per Inch of Stroke <sup>3</sup>	Inertia 2:1 Zero Stroke <sup>3</sup>	Inertia 2:1 Per Inch of Stroke <sup>3</sup>	Inertia Inline Zero Stroke <sup>3</sup>	Inertia Inline Per Inch of Stroke <sup>3</sup>	Unit Weight "U" Motor Mount <sup>4</sup>	Unit Weight "L" Motor Mount <sup>4</sup>	Weight Per Inch of Stroke <sup>4</sup>
	lb-in <sup>2</sup>	lb-in <sup>2</sup>	lb-in <sup>2</sup>	lb-in <sup>2</sup>	lb-in <sup>2</sup>	lb-in <sup>2</sup>	lb	lb	lb
SD930	1,018.72	4.7929	189.97	1.1982	211.02	4.7929	589	608	12.07
SD948	1,099.84	4.7929	216.68	1.1982	211.02	4.7929	595	614	12.07
SD966	1,285.36	4.7929	279.53	1.1982	334.71	4.7929	609	628	12.07
SD999	1,564.22	4.9089	331.93	1.2272	116.89	4.9089	629	648	12.07

<sup>1</sup> Maximum velocity and maximum screw speed may not be achievable at maximum stroke.

<sup>2</sup> Larger Motor or Gearhead Frames and longer stroke lengths are available upon request.

<sup>3</sup> All inertia values are at the input shaft and are representative of typical pulleys, bushings, couplers, etc. Actual values may vary due to motor selection.

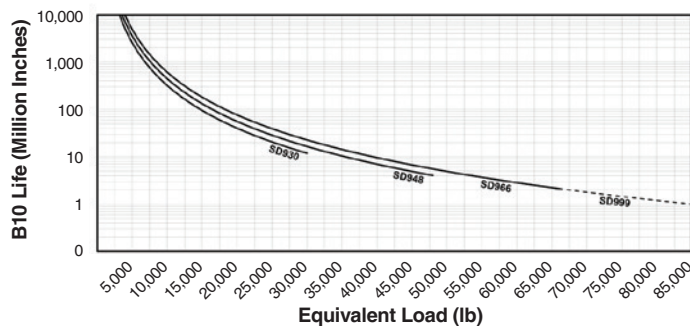
<sup>4</sup> Weight values are for reference only and vary depending on configuration.

"U" Parallel offset configuration

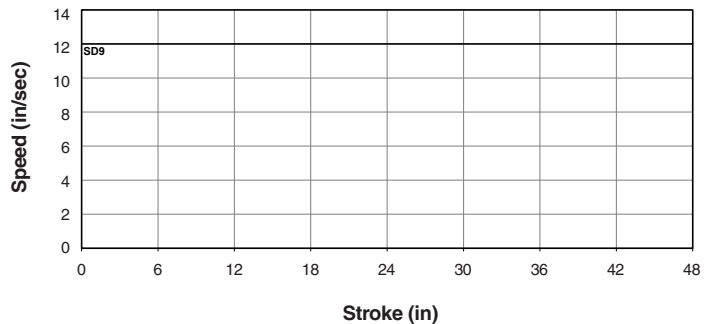
"L" Inline configuration

## DATA CURVES FOR THE ELIMINATOR SD ACTUATOR

### Dynamic Capacity: Life Vs. Load



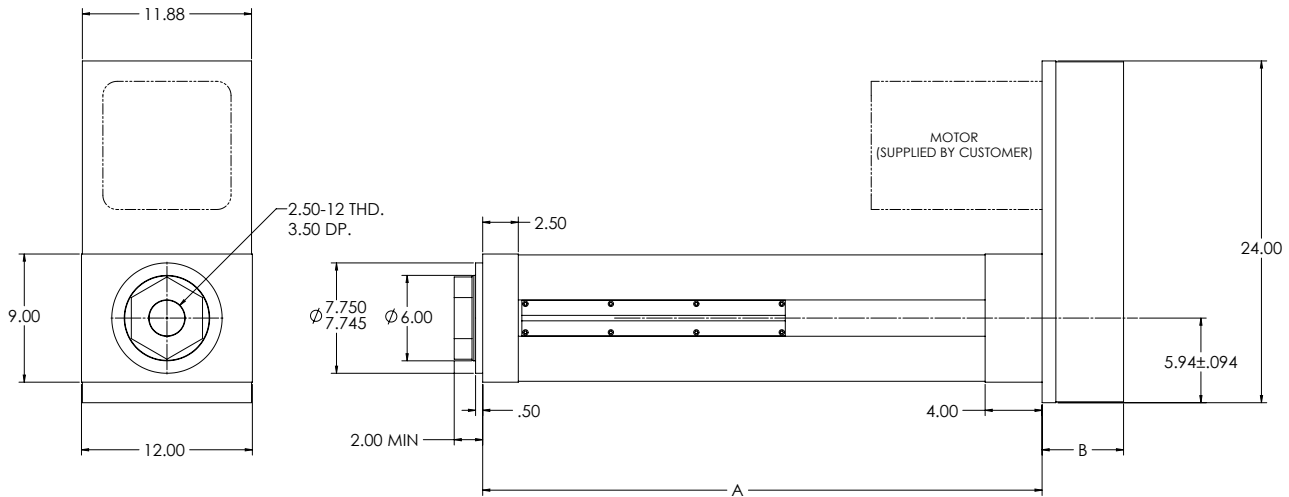
### Dynamic Capacity: Speed Vs. Stroke



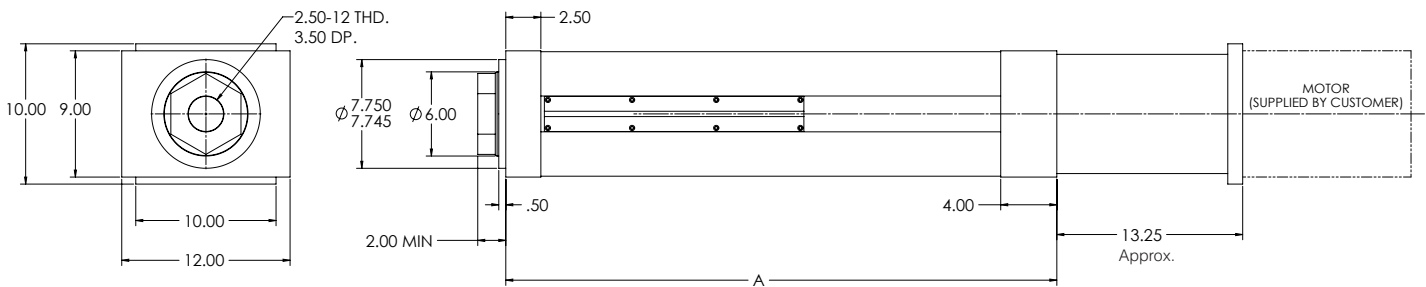
# DIMENSIONED DRAWINGS FOR THE ELIMINATOR SD ACTUATOR

Dimensions in inches

## U-Parallel Offset Motor Configuration



## L-Inline Motor Configuration



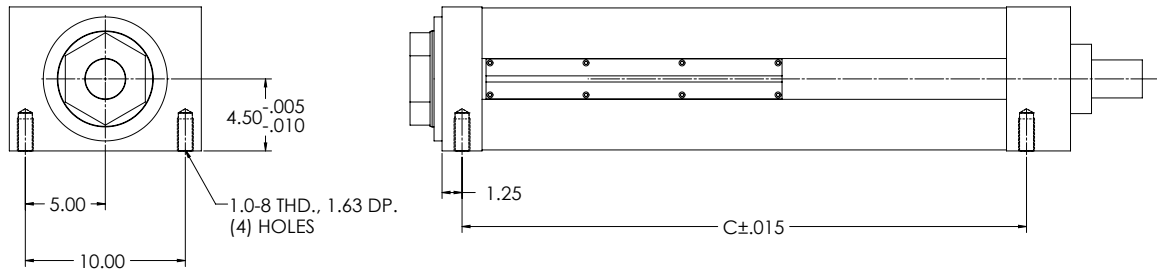
## SD U-Parallel Offset and L-Inline Motor Configuration

Model	A	B
SD930	27.28	5.72
SD948	27.28	5.72
SD966	27.28	5.72
SD999	29.88	6.22

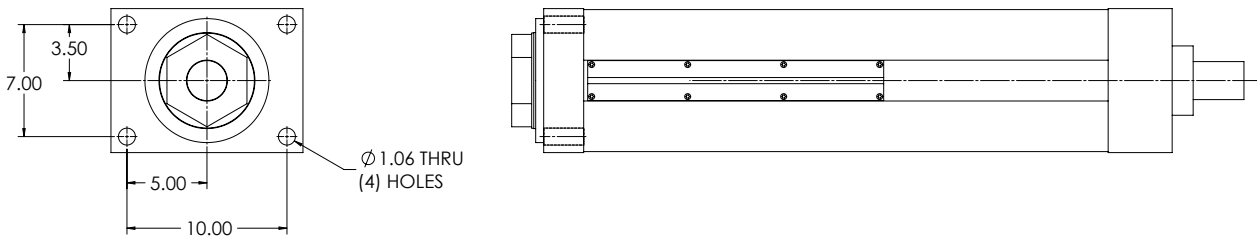
# DIMENSIONED DRAWINGS FOR THE ELIMINATOR SD ACTUATOR

Dimensions in inches

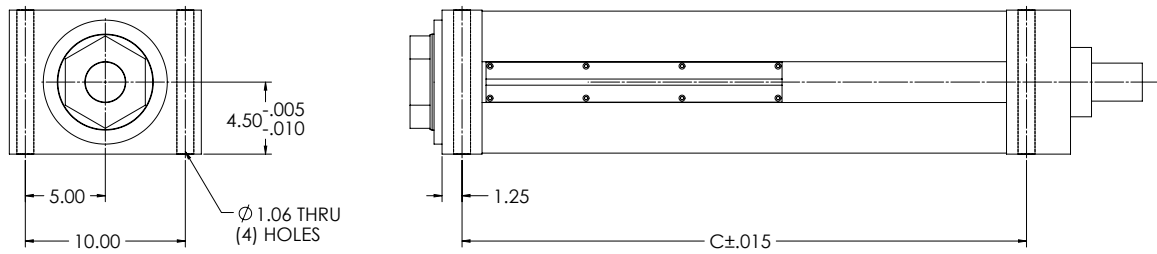
## Bottom Mount Dimensions



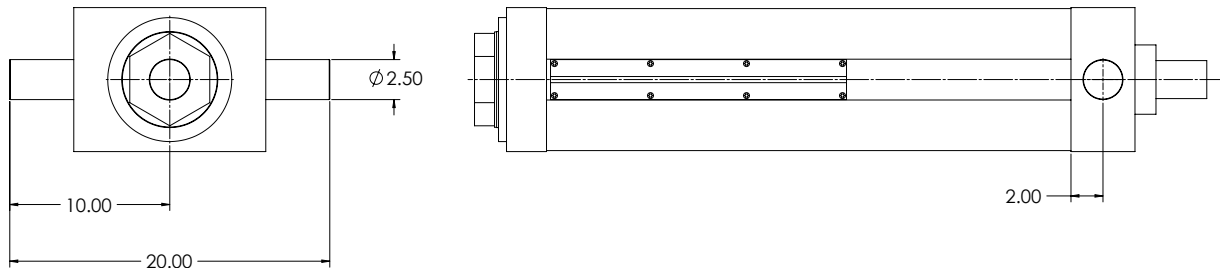
## Front Flange Dimensions



## Foot Mount Dimensions



## Trunnion Mount Dimensions



## SD Mounting Dimensions (Bottom Mount, Front Flange, Foot Mount, Trunnion Mount)

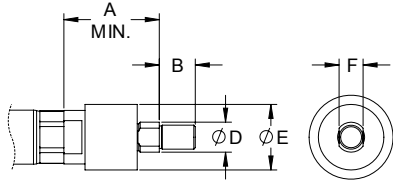
Model	C
SD930	23.28
SD948	23.28
SD966	23.28
SD999	25.88

# DIMENSIONED DRAWINGS FOR THE ELIMINATOR SD ACTUATOR

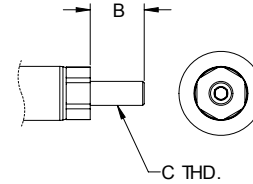
Dimensions in inches

## Rod End Options

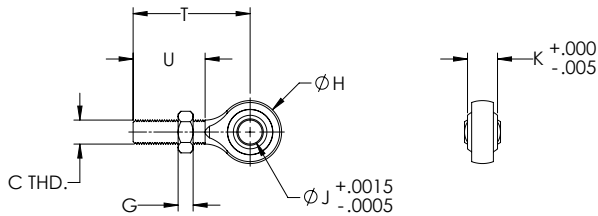
### Self-Aligning Coupler



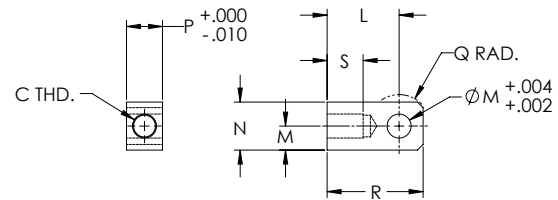
### Male Thread



### Spherical Rod Eye



### Female Eye

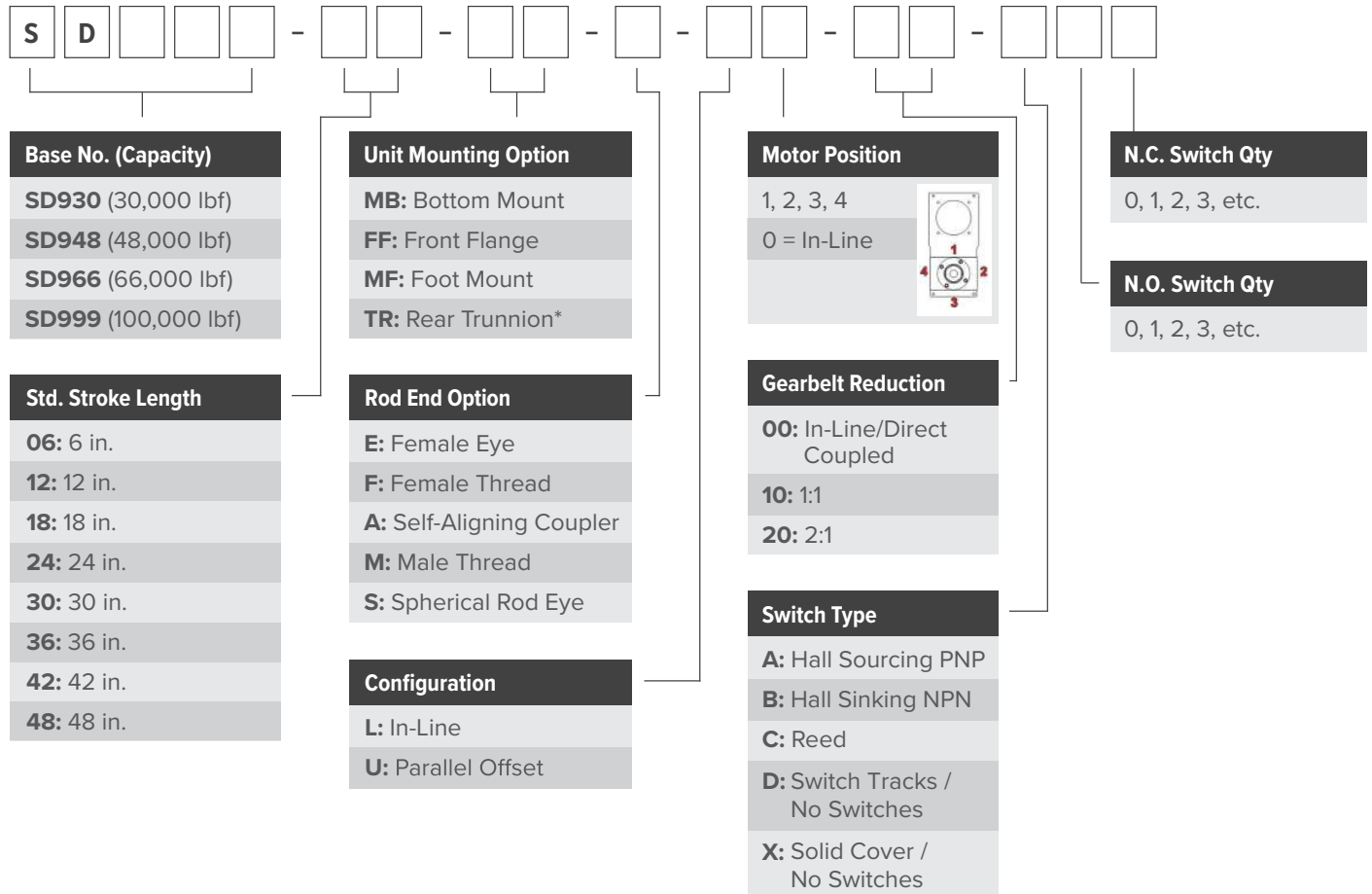


## SD Rod End Dimensions

Model	A	B	C	D	E	F	G	H	J	K	L	M	N	P	Q	R	S	T	U
SD930	6.50	3.50	2 1/2-12	3.25	7.00	2.88	1.72	5.00	2.00	1.75	6.13	3.00	6.00	3.00	3.25	9.13	3.50	4.63	2-12
SD948	6.50	3.50	3 1/2-12	3.25	7.00	2.88	1.72	5.00	2.00	1.75	6.13	3.00	6.00	3.00	3.25	9.13	3.50	4.63	2-12
SD966	6.50	3.50	4 1/2-12	3.25	7.00	2.88	1.72	5.00	2.00	1.75	6.13	3.00	6.00	3.00	3.25	9.13	3.50	4.63	2-12
SD999	6.50	3.50	5 1/2-12	3.25	7.00	2.88	1.72	5.00	2.00	1.75	6.13	3.00	6.00	3.00	3.25	9.13	3.50	4.63	2-12

# ORDERING GUIDE FOR THE ELIMINATOR SD ACTUATOR

## Ordering Information



For custom stroke lengths, contact EDrive.

\* Rear Trunnion not available for SD999