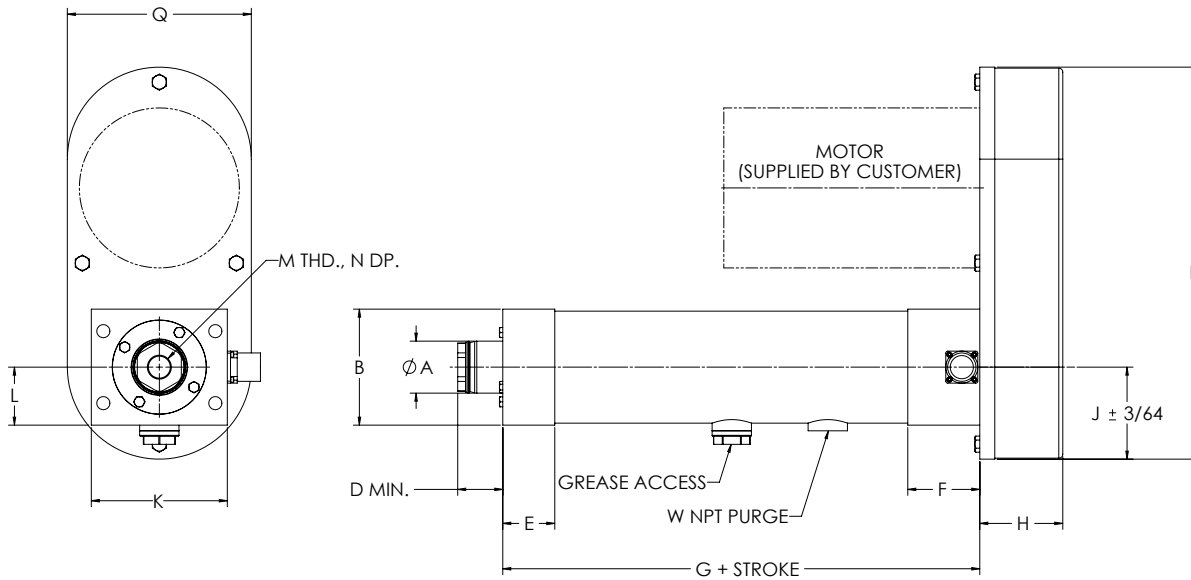


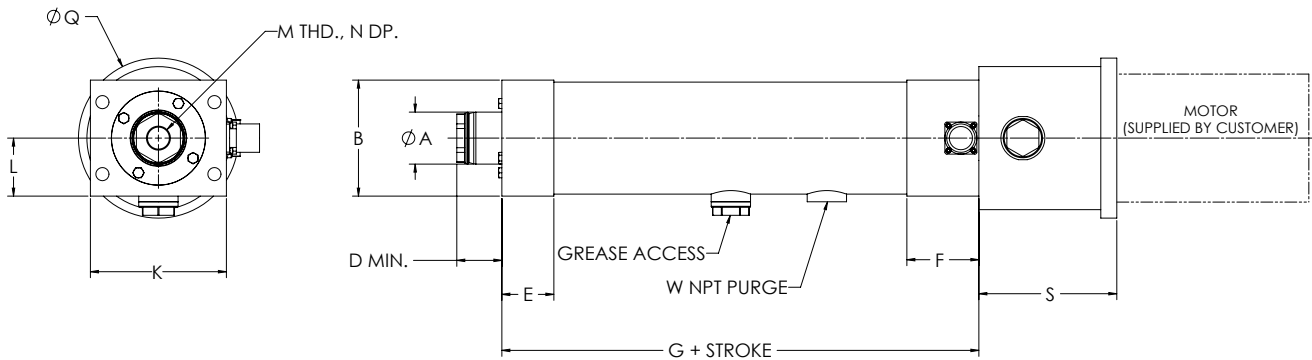
DIMENSIONED DRAWINGS FOR THE ELIMINATOR SPL ACTUATOR

Dimensions in inches

U-Parallel Offset Motor Configuration



L-Inline Motor Configuration



"S" length may vary depending on motor or gearbox.

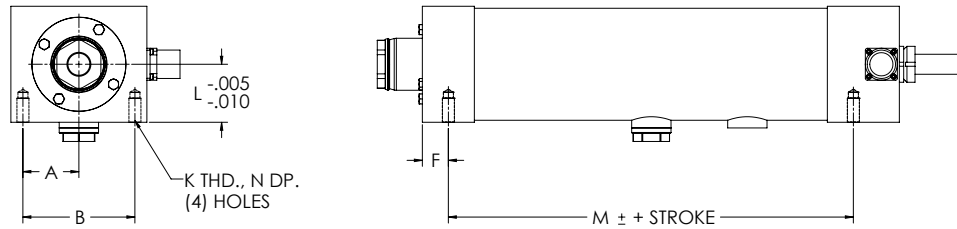
SPL U-Parallel Offset and L-Inline Motor Configuration

Model	A	B	C	D	E	F	G	H	J	K	L	M	N	P	Q	S	W
SPL201	1.13	2.28	3.00	1.04	1.00	1.00	6.38	1.88	2.25	4.50	1.14	1/2-20	1.00	8.50	4.50	2.94	1/8
SPL302	1.63	3.63	4.25	1.41	1.63	1.63	8.91	2.59	3.20	5.75	1.81	3/4-16	1.00	12.25	5.75	4.31	1/8
SPL304	1.63	3.63	4.25	1.56	1.63	1.63	8.91	2.59	3.20	5.75	1.81	3/4-16	1.00	12.25	5.75	4.31	1/8
SPL404	2.25	4.38	5.50	1.88	2.00	2.00	10.22	2.72	3.50	7.19	2.19	3/4-16	1.00	10.96	7.19	5.25	1/4
SPL406	2.25	4.38	5.50	1.79	2.00	2.00	10.22	2.72	3.50	7.19	2.19	3/4-16	1.00	10.96	7.19	5.25	1/4
SPL508	3.00	5.63	7.75	2.56	2.50	3.00	14.38	4.50	4.61	9.00	3.88	1 1/4-12	1.63	17.25	9.00	6.75	3/8
SPL516	3.00	5.63	7.75	2.56	2.50	3.00	14.38	4.50	4.61	9.00	3.88	1 1/4-12	1.63	17.25	9.00	6.75	3/8
SPL618	3.50	6.13	8.50	2.75	3.00	3.00	15.00	4.68	5.84	11.00	3.06	1 1/4-12	1.63	19.50	11.00	7.25	1/2
SPL625	Contact EDrive																

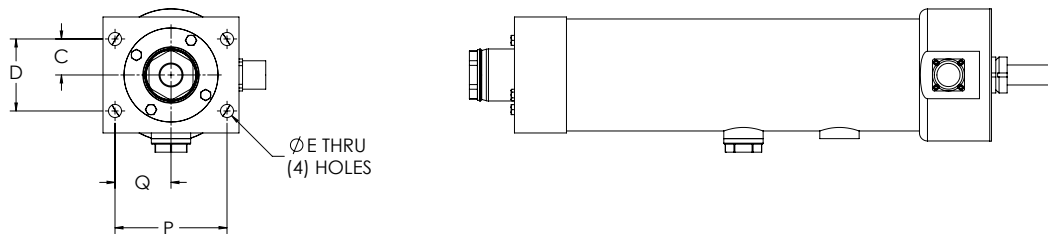
DIMENSIONED DRAWINGS FOR THE ELIMINATOR SPL ACTUATOR

Dimensions in inches

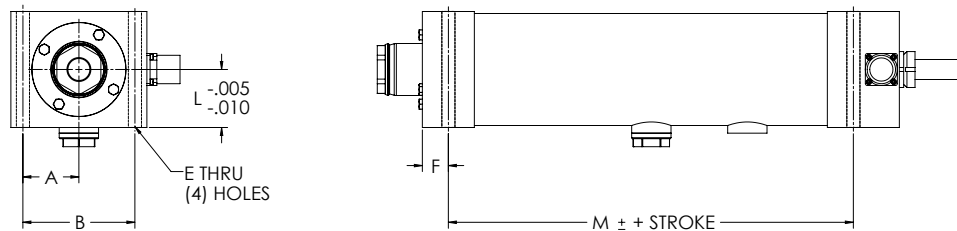
Bottom Mount Dimensions



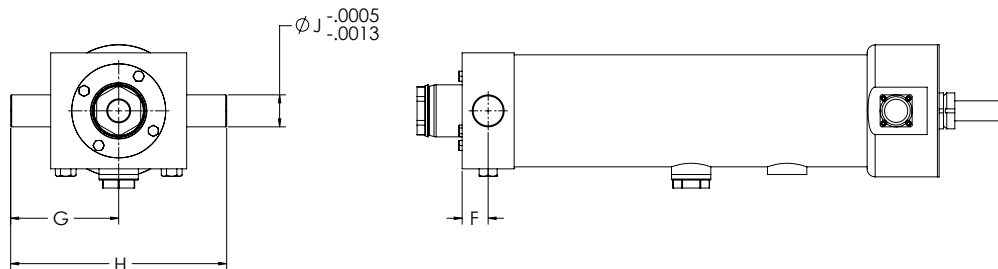
Front Flange Dimensions



Foot Mount Dimensions



Trunnion Mount Dimensions



SPL Mounting Dimensions (Bottom Mount, Front Flange, Foot Mount, Trunnion Mount)

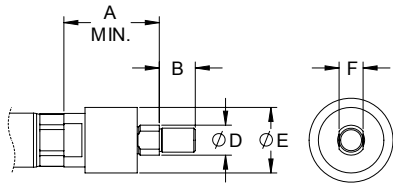
Model	A	B	C	D	E	F	G	H	J	K	L	M	N	P	Q
SPL201	1.13	2.25	0.69	1.38	0.34	0.49	2.25	4.50	0.50	5/16-18	1.14	5.38	0.63	2.38	1.19
SPL302	1.75	3.50	1.13	2.25	0.41	0.81	3.38	6.75	1.00	3/8-16	1.81	7.28	0.75	3.50	1.75
SPL304	1.75	3.50	1.13	2.25	0.41	0.81	3.38	6.75	1.00	3/8-16	1.81	7.28	0.75	3.50	1.75
SPL404	2.19	4.38	1.44	2.88	0.69	1.00	4.50	9.00	1.25	5/8-11	2.19	8.22	1.00	4.38	2.19
SPL406	2.19	4.38	1.44	2.88	0.69	1.00	4.50	9.00	1.25	5/8-11	2.19	8.22	1.00	4.38	2.19
SPL508	3.13	6.25	1.75	3.50	0.81	1.25	6.25	12.50	1.50	3/4-10	3.88	11.63	1.25	6.25	3.13
SPL516	3.13	6.25	1.75	3.50	0.81	1.25	6.25	12.50	1.50	3/4-10	3.88	11.63	1.25	6.25	3.13
SPL618	3.31	6.63	2.00	4.00	1.06	1.50	7.13	14.25	2.00	1-8	3.06	12.00	1.63	6.63	3.31
SPL625	Contact EDrive														

DIMENSIONED DRAWINGS FOR THE ELIMINATOR SPL ACTUATOR

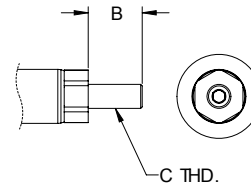
Dimensions in inches

Rod End Options

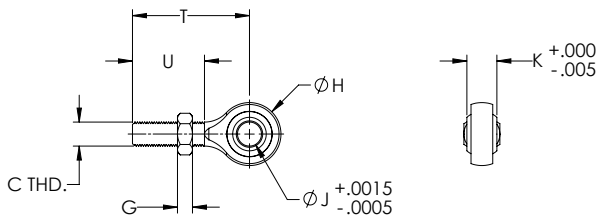
Self-Aligning Coupler



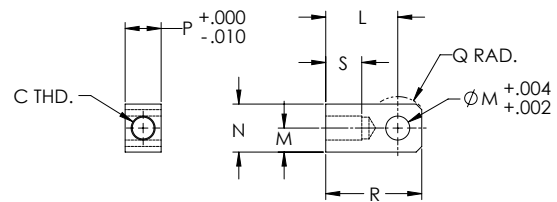
Male Thread



Spherical Rod Eye



Female Eye



SPL Rod End Dimensions

Model	A	B	C	D	E	F	G	H	J	K	L	M	N	P	Q	R	S	T	U
SPL201	2.00	0.75	1/2-20	0.63	1.37	0.50	0.31	1.31	0.50	0.63	1.50	0.50	1.00	0.75	0.63	2.00	0.75	2.44	1.50
SPL302	2.38	1.13	3/4-16	0.97	1.75	0.88	0.42	1.75	0.75	0.88	2.06	0.75	1.50	1.25	0.88	2.81	1.13	2.88	1.75
SPL304	2.38	1.13	3/4-16	0.97	1.75	0.88	0.42	1.75	0.75	0.88	2.06	0.75	1.50	1.25	0.88	2.81	1.13	2.88	1.75
SPL404	2.38	1.13	3/4-16	0.97	1.75	0.88	0.42	1.75	0.75	0.88	2.06	0.75	1.50	1.25	0.88	2.81	1.13	2.88	1.75
SPL406	2.38	1.13	3/4-16	0.97	1.75	0.88	0.42	1.75	0.75	0.88	2.06	0.75	1.50	1.25	0.88	2.81	1.13	2.88	1.75
SPL508	2.94	1.63	1 1/4-12	1.38	2.50	1.25	0.72	2.75	1.00	1.38	3.44	1.38	2.75	2.00	1.56	4.81	2.00	4.13	2.13
SPL516	2.94	1.63	1 1/4-12	1.38	2.50	1.25	0.72	2.75	1.00	1.38	3.44	1.38	2.75	2.00	1.56	4.81	2.00	4.13	2.13
SPL618	2.94	1.63	1 1/4-12	1.38	2.50	1.25	0.72	2.75	1.00	1.38	3.44	1.38	2.75	2.00	1.56	4.81	2.00	4.13	2.13
SPL625	Contact EDrive																		