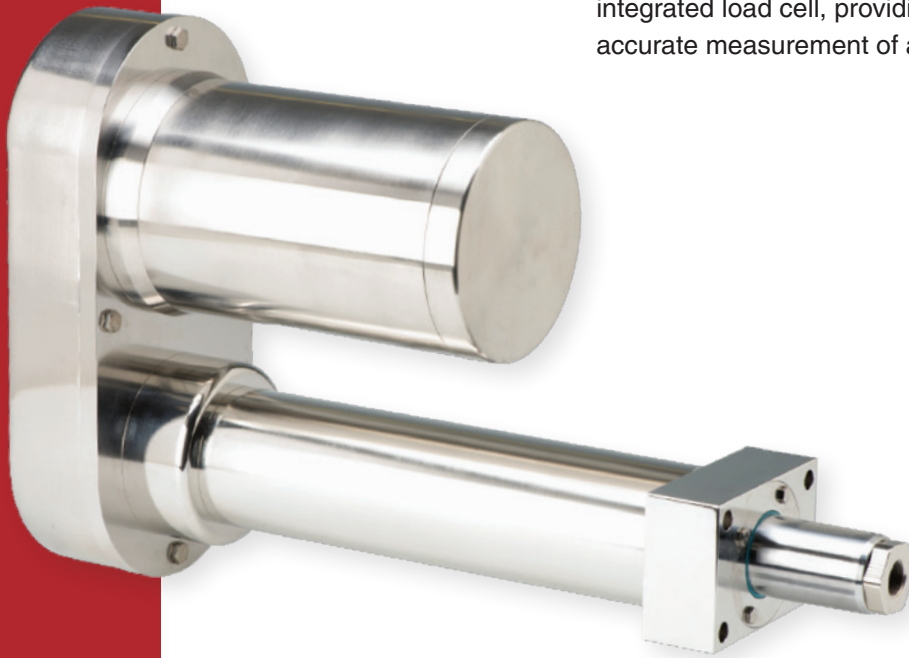


Eliminator SPL™ Actuator

IP69K STAINLESS STEEL ACTUATOR + INTEGRATED LOAD CELL

The Eliminator SPL offers all of the performance advantages of our SP actuator, including an IP69K rating. Ideal for food and medical-grade high-pressure, high-temperature washdown applications. These actuators include an integrated load cell, providing continuous and accurate measurement of applied loads and force.



Ideal for a Variety of Applications Including:

- Process Monitoring
- Prototyping
- Force Control
- Hydraulic Replacement
- And More

Key Features:

IP69K

- IP69K - Rated for High-Pressure / High-Temperature washdown
- “Measure while you Press” Integrated Load Cell design
- Contoured 316 Stainless Steel exterior with hard chrome plated piston rod
- Durable anti-rotation feature
- Loads and forces up to 25,000 lbf, High velocity to 20 in/sec, stroke to 48 inches
- Accurate to within 0.5% of rated force

SPECIFICATION CHART FOR THE ELIMINATOR SPL ACTUATOR

Model Number	Thrust Load Rated	Linear Velocity Max. ¹	Travel Length Max. ²	Frame Size	Lead	Ball Screw Diameter	Ball Screw Max. ¹	Torque @ Ball Screw Max.	Dynamic Capacity Per Million Revs	Dynamic Capacity Per Million Inches	Motor Gearhead Frame Supported Max. ²
	lbr	in/s	in	in	mm	mm	RPM	in-lb	lbr	lbr	in
SPL201	1,000	8.0	12	2	4	16	3,048	28	1,529	825	2.75
SPL302	2,000	20.0	36	3	10	25	3,048	139	6,490	4,760	4.25
SPL304	4,000	20.0	36	3	10	25	3,048	278	6,490	4,760	4.25
SPL404	4,000	18.0	42	4	10	32	2,743	278	14,580	10,690	5.75
SPL406	6,000	18.0	42	4	10	32	2,743	418	14,580	10,690	5.75
SPL508	8,000	14.0	48	5	12	50	1,778	668	31,250	24,340	8
SPL516	16,000	14.0	48	5	12	50	1,778	1,337	31,250	24,340	8
SPL618	18,000	9.8	48	6	12	63	1,245	1,504	35,750	27,840	8
SPL625	25,000	14.4	48	6	20	80	1,097	3,481	52,150	48,160	8

Model Number	Inertia 1:1 Zero Stroke ³	Inertia 1:1 Per Inch of Stroke ³	Inertia 2:1 Zero Stroke ³	Inertia 2:1 Per Inch of Stroke ³	Inertia Inline Zero Stroke ³	Inertia Inline Per Inch of Stroke ³	Unit Weight "U" Motor Mount ⁴	Unit Weight "L" Motor Mount ⁴	Weight Per Inch of Stroke ⁴
	lb-in ²	lb-in ²	lb-in ²	lb-in ²	lb-in ²	lb-in ²	lb	lb	lb
SPL201	0.51	0.0031	0.27	0.0008	0.04	0.0031	9	7	0.96
SPL302	4.31	0.0212	1.64	0.0053	0.34	0.0212	43	70	2.13
SPL304	4.87	0.0212	1.46	0.0053	0.38	0.0212	43	70	2.13
SPL404	23.24	0.0457	4.11	0.0114	1.99	0.0457	76	70	2.73
SPL406	23.24	0.0457	4.11	0.0114	1.99	0.0457	76	70	2.73
SPL508	139.27	0.2688	22.66	0.0672	5.92	0.2688	179	145	4.99
SPL516	139.36	0.2688	22.68	0.0672	6.00	0.2688	179	145	4.99
SPL618	281.96	0.7361	43.91	0.1840	12.31	0.7361	216	181	6.21
SPL625	295.02	1.8713	47.17	0.4678	25.37	1.8713	282	248	6.62

¹ Maximum velocity and maximum screw speed may not be achievable at maximum stroke.

² Larger Motor or Gearhead Frames and longer stroke lengths are available upon request.

³ All inertia values are at the input shaft and are representative of typical pulleys, bushings, couplers, etc. Actual values may vary due to motor selection.

⁴ Weight values are for reference only and vary depending on configuration.

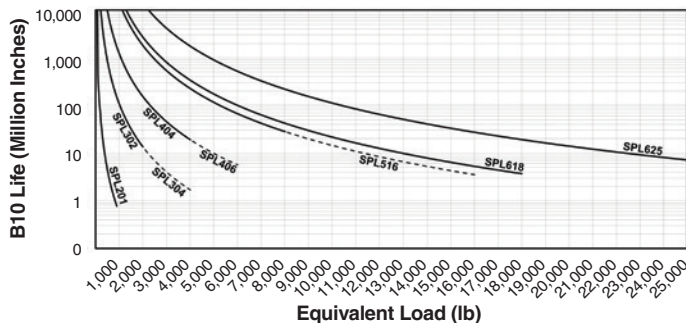
*IP69K rating for static only.

"U" Parallel offset configuration

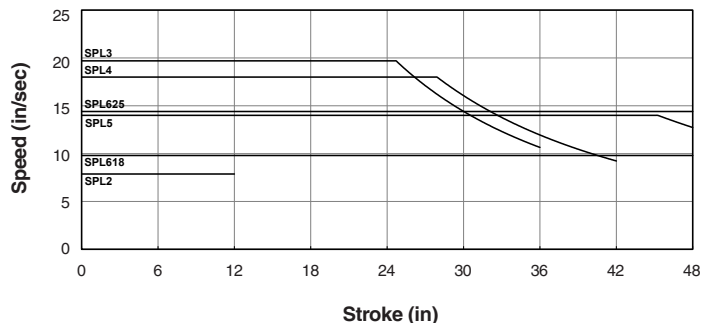
"L" Inline configuration

DATA CURVES FOR THE ELIMINATOR SPL ACTUATOR

Dynamic Capacity: Life Vs. Load



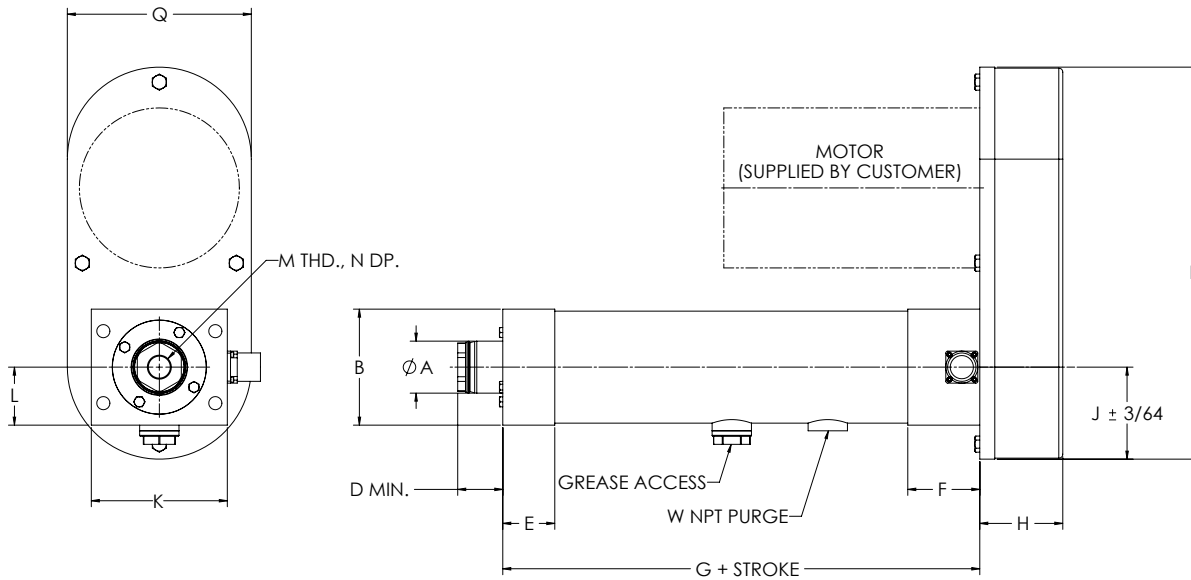
Dynamic Capacity: Speed Vs. Stroke



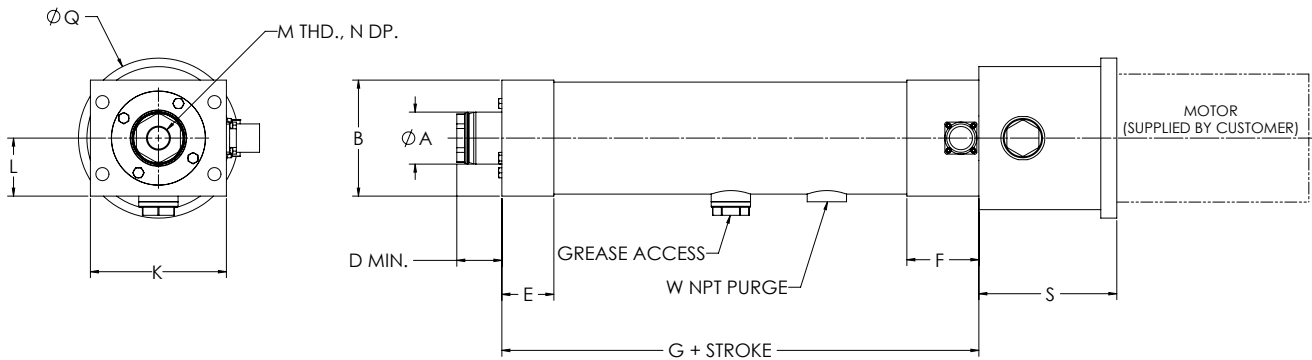
DIMENSIONED DRAWINGS FOR THE ELIMINATOR SPL ACTUATOR

Dimensions in inches

U-Parallel Offset Motor Configuration



L-Inline Motor Configuration



"S" length may vary depending on motor or gearbox.

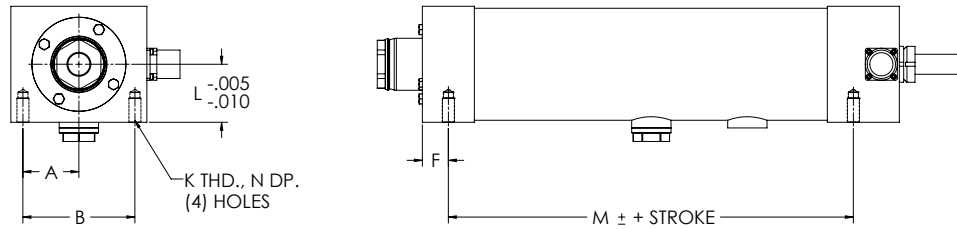
SPL U-Parallel Offset and L-Inline Motor Configuration

Model	A	B	C	D	E	F	G	H	J	K	L	M	N	P	Q	S	W
SPL201	1.13	2.28	3.00	1.04	1.00	1.00	6.38	1.88	2.25	4.50	1.14	1/2-20	1.00	8.50	4.50	2.94	1/8
SPL302	1.63	3.63	4.25	1.41	1.63	1.63	8.91	2.59	3.20	5.75	1.81	3/4-16	1.00	12.25	5.75	4.31	1/8
SPL304	1.63	3.63	4.25	1.56	1.63	1.63	8.91	2.59	3.20	5.75	1.81	3/4-16	1.00	12.25	5.75	4.31	1/8
SPL404	2.25	4.38	5.50	1.88	2.00	2.00	10.22	2.72	3.50	7.19	2.19	3/4-16	1.00	10.96	7.19	5.25	1/4
SPL406	2.25	4.38	5.50	1.79	2.00	2.00	10.22	2.72	3.50	7.19	2.19	3/4-16	1.00	10.96	7.19	5.25	1/4
SPL508	3.00	5.63	7.75	2.56	2.50	3.00	14.38	4.50	4.61	9.00	3.88	1 1/4-12	1.63	17.25	9.00	6.75	3/8
SPL516	3.00	5.63	7.75	2.56	2.50	3.00	14.38	4.50	4.61	9.00	3.88	1 1/4-12	1.63	17.25	9.00	6.75	3/8
SPL618	3.50	6.13	8.50	2.75	3.00	3.00	15.00	4.68	5.84	11.00	3.06	1 1/4-12	1.63	19.50	11.00	7.25	1/2
SPL625	Contact EDrive																

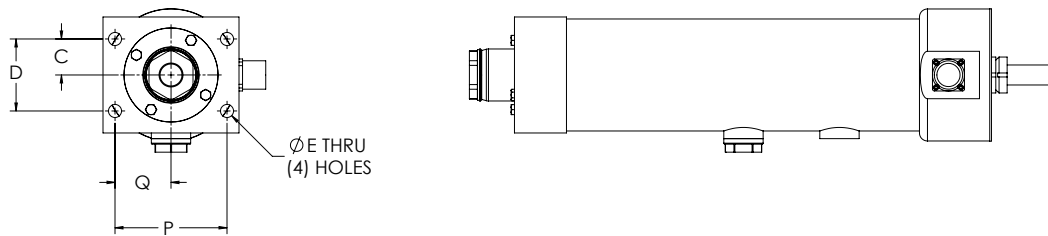
DIMENSIONED DRAWINGS FOR THE ELIMINATOR SPL ACTUATOR

Dimensions in inches

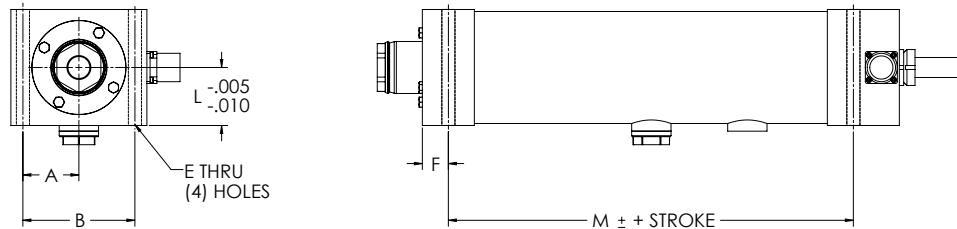
Bottom Mount Dimensions



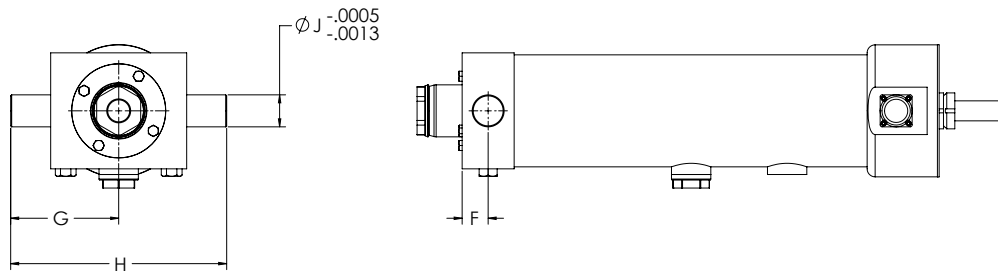
Front Flange Dimensions



Foot Mount Dimensions



Trunnion Mount Dimensions



SPL Mounting Dimensions (Bottom Mount, Front Flange, Foot Mount, Trunnion Mount)

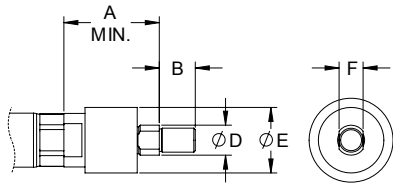
Model	A	B	C	D	E	F	G	H	J	K	L	M	N	P	Q
SPL201	1.13	2.25	0.69	1.38	0.34	0.49	2.25	4.50	0.50	5/16-18	1.14	5.38	0.63	2.38	1.19
SPL302	1.75	3.50	1.13	2.25	0.41	0.81	3.38	6.75	1.00	3/8-16	1.81	7.28	0.75	3.50	1.75
SPL304	1.75	3.50	1.13	2.25	0.41	0.81	3.38	6.75	1.00	3/8-16	1.81	7.28	0.75	3.50	1.75
SPL404	2.19	4.38	1.44	2.88	0.69	1.00	4.50	9.00	1.25	5/8-11	2.19	8.22	1.00	4.38	2.19
SPL406	2.19	4.38	1.44	2.88	0.69	1.00	4.50	9.00	1.25	5/8-11	2.19	8.22	1.00	4.38	2.19
SPL508	3.13	6.25	1.75	3.50	0.81	1.25	6.25	12.50	1.50	3/4-10	3.88	11.63	1.25	6.25	3.13
SPL516	3.13	6.25	1.75	3.50	0.81	1.25	6.25	12.50	1.50	3/4-10	3.88	11.63	1.25	6.25	3.13
SPL618	3.31	6.63	2.00	4.00	1.06	1.50	7.13	14.25	2.00	1-8	3.06	12.00	1.63	6.63	3.31
SPL625	Contact EDrive														

DIMENSIONED DRAWINGS FOR THE ELIMINATOR SPL ACTUATOR

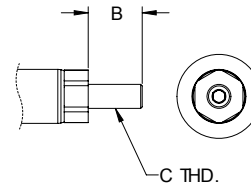
Dimensions in inches

Rod End Options

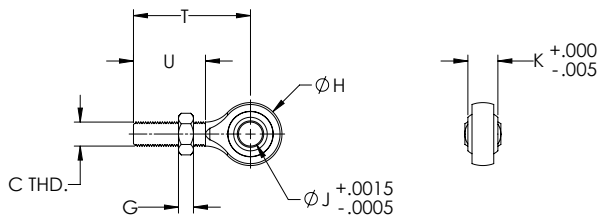
Self-Aligning Coupler



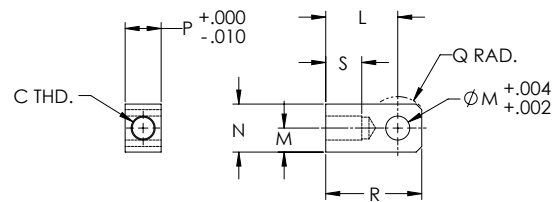
Male Thread



Spherical Rod Eye



Female Eye

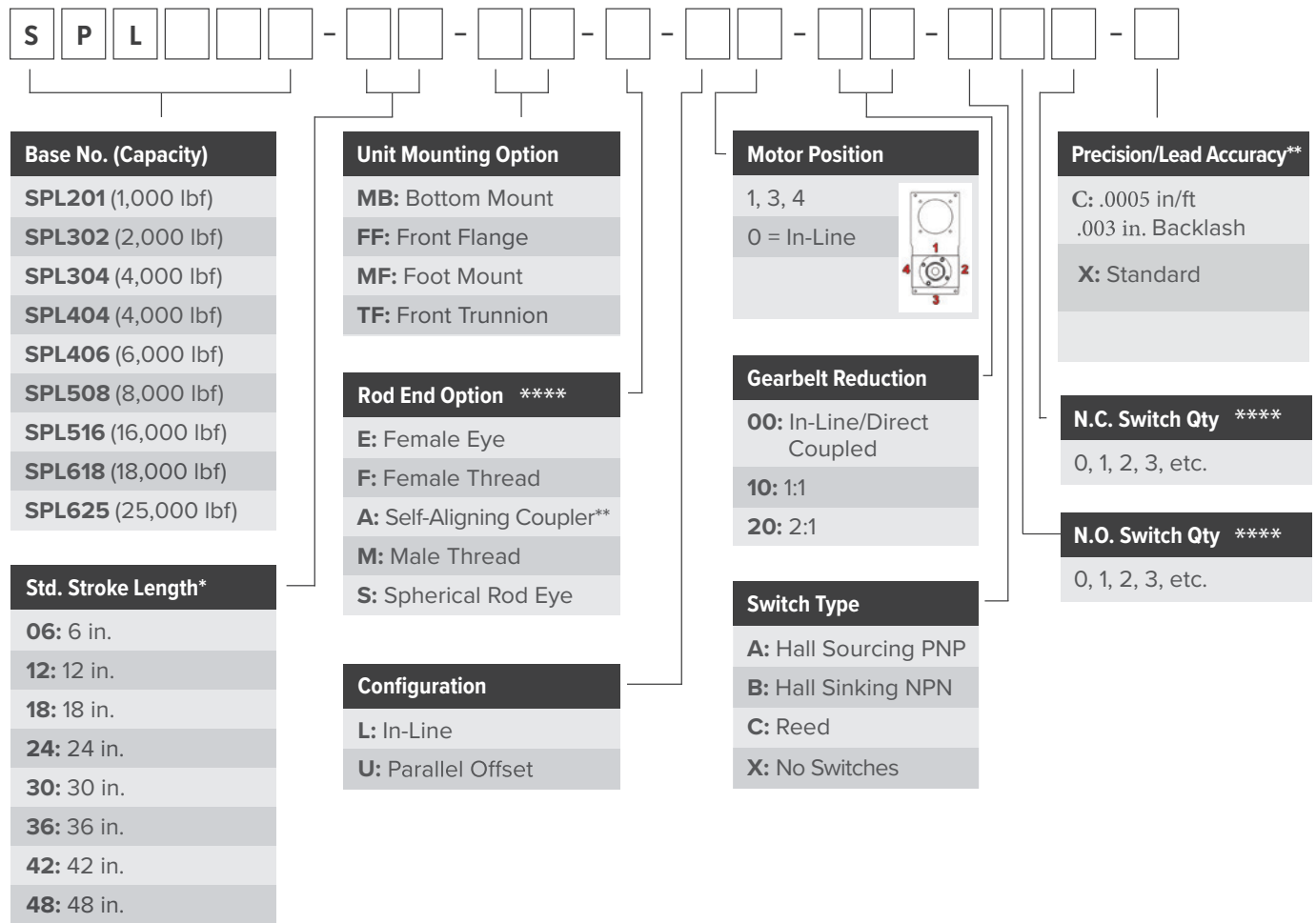


SPL Rod End Dimensions

Model	A	B	C	D	E	F	G	H	J	K	L	M	N	P	Q	R	S	T	U
SPL201	2.00	0.75	1/2-20	0.63	1.37	0.50	0.31	1.31	0.50	0.63	1.50	0.50	1.00	0.75	0.63	2.00	0.75	2.44	1.50
SPL302	2.38	1.13	3/4-16	0.97	1.75	0.88	0.42	1.75	0.75	0.88	2.06	0.75	1.50	1.25	0.88	2.81	1.13	2.88	1.75
SPL304	2.38	1.13	3/4-16	0.97	1.75	0.88	0.42	1.75	0.75	0.88	2.06	0.75	1.50	1.25	0.88	2.81	1.13	2.88	1.75
SPL404	2.38	1.13	3/4-16	0.97	1.75	0.88	0.42	1.75	0.75	0.88	2.06	0.75	1.50	1.25	0.88	2.81	1.13	2.88	1.75
SPL406	2.38	1.13	3/4-16	0.97	1.75	0.88	0.42	1.75	0.75	0.88	2.06	0.75	1.50	1.25	0.88	2.81	1.13	2.88	1.75
SPL508	2.94	1.63	1 1/4-12	1.38	2.50	1.25	0.72	2.75	1.00	1.38	3.44	1.38	2.75	2.00	1.56	4.81	2.00	4.13	2.13
SPL516	2.94	1.63	1 1/4-12	1.38	2.50	1.25	0.72	2.75	1.00	1.38	3.44	1.38	2.75	2.00	1.56	4.81	2.00	4.13	2.13
SPL618	2.94	1.63	1 1/4-12	1.38	2.50	1.25	0.72	2.75	1.00	1.38	3.44	1.38	2.75	2.00	1.56	4.81	2.00	4.13	2.13
SPL625	Contact EDrive																		

ORDERING GUIDE FOR THE ELIMINATOR SPL ACTUATOR

Ordering Information



For custom stroke lengths, contact EDrive.

*** Standard Stroke Lengths**

- SPL201 - 0.0005 in/ft, 0.003 in. Backlash
- SPL302 – SPL304 stroke lengths up to 36 in.
- SPL404 – SPL406 stroke lengths up to 42 in.
- SPL508 – SPL625 stroke lengths up to 48 in.

**** Self-Aligning Coupler**

Not available for SPL625

***** Precision/Lead Accuracy**

SPL201-0.0005 in/ft, 0.003 in. Backlash

****** IP69K Exceptions**

Self-Aligning Coupler and Spherical Rod Ends not rated
Sealed Limit Switches, IP65 rated