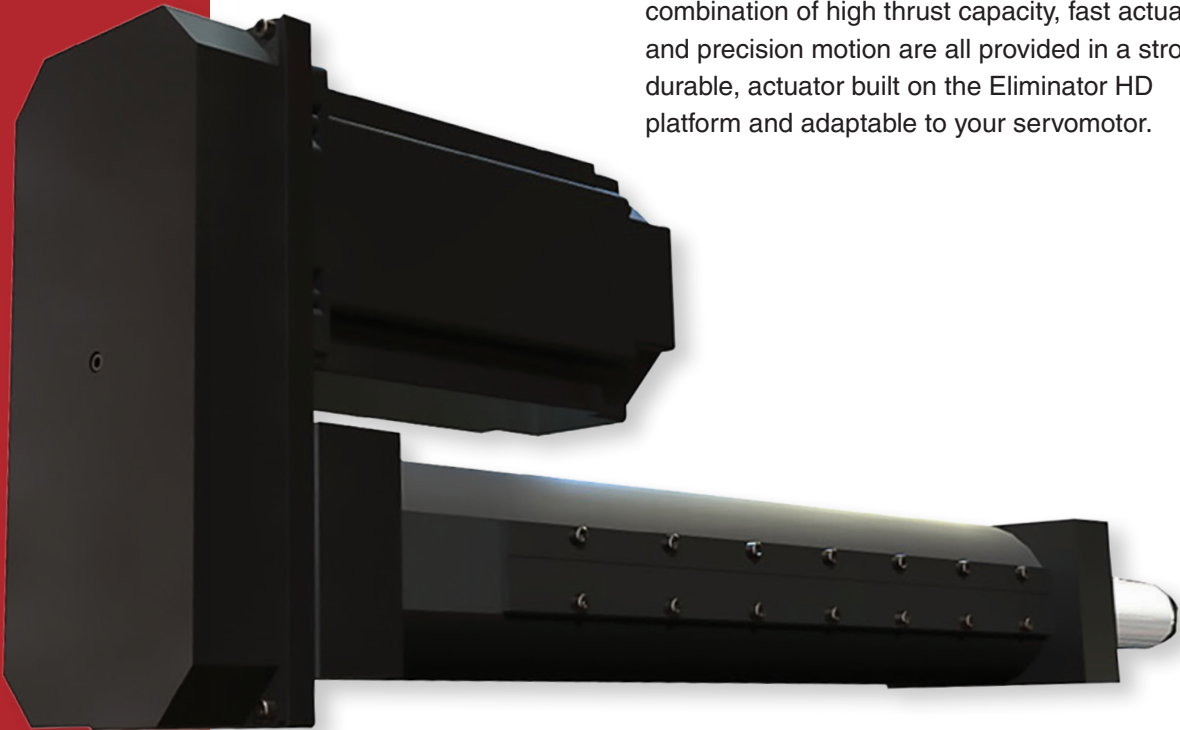


Eliminator SS™ Actuator

EXTREME SPEED CAPABILITY IN AN ELIMINATOR PLATFORM

The Eliminator SS Super Speed actuator is the linear solution for those automation applications demanding extremely high-speed motion. This combination of high thrust capacity, fast actuation, and precision motion are all provided in a strong, durable, actuator built on the Eliminator HD platform and adaptable to your servomotor.



Ideal for a Variety of Applications Including:

- Timber Processing
- Cut-Off Applications
- Packaging
- Hydraulic / Pneumatic Replacement
- And More

Key Features:

- Rugged steel construction with durable anti-rotation feature
- Rated thrust up to 2,000 lbf
- Extreme speed capability up to 63 in/sec, stroke up to 48 inches
- Sealed chamber design with purge provisions to meet IP54

SPECIFICATION CHART FOR THE ELIMINATOR SS ACTUATOR

Model Number	Thrust Load Rated	Linear Velocity Max. ¹	Travel Length Max. ²	Frame Size	Lead	Ball Screw Diameter	Ball Screw Max. ¹	Torque @ Ball Screw Max.	Dynamic Capacity Per Million Revs	Dynamic Capacity Per Million Inches	Motor Gearhead Frame Supported Max. ²
	lbr	in/s	in	in	in	in	RPM	in-lb	lbr	lbr	in
SS454	2,000	63	48	4.5	1.875	1.5	2,016	663	5,960	7,350	7

Model Number	Inertia 1:1 Zero Stroke ³	Inertia 1:1 Per Inch of Stroke ³	Inertia 2:1 Zero Stroke ³	Inertia 2:1 Per Inch of Stroke ³	Inertia Inline Zero Stroke ³	Inertia Inline Per Inch of Stroke ³	Unit Weight "U" Motor Mount ⁴	Unit Weight "L" Motor Mount ⁴	Weight Per Inch of Stroke ⁴
	lb-in ²	lb-in ²	lb-in ²	lb-in ²	lb-in ²	lb-in ²	lb	lb	lb
SS454	18.43	0.1550	6.19	0.0388	3.24	0.1550	87	62	2.14

¹ Maximum velocity and maximum screw speed may not be achievable at maximum stroke.

² Larger Motor or Gearhead Frames and longer stroke lengths are available upon request.

³ All inertia values are at the input shaft and are representative of typical pulleys, bushings, couplers, etc. Actual values may vary due to motor selection.

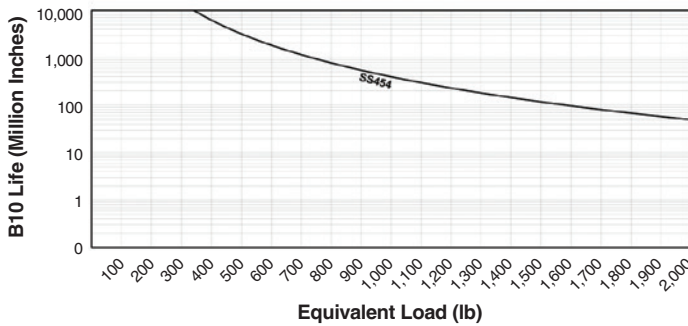
⁴ Weight values are for reference only and vary depending on configuration.

"U" Parallel offset configuration

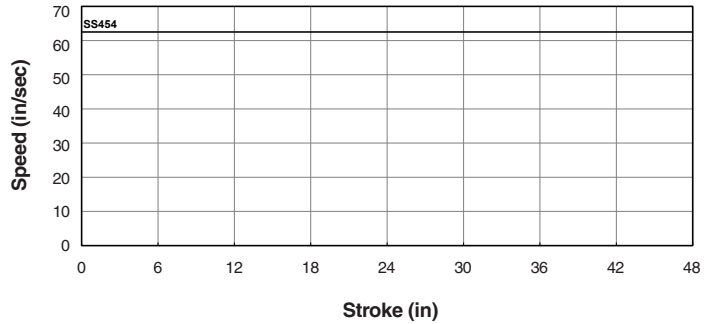
"L" Inline configuration

DATA CURVES FOR THE ELIMINATOR SS ACTUATOR

Dynamic Capacity: Life Vs. Load



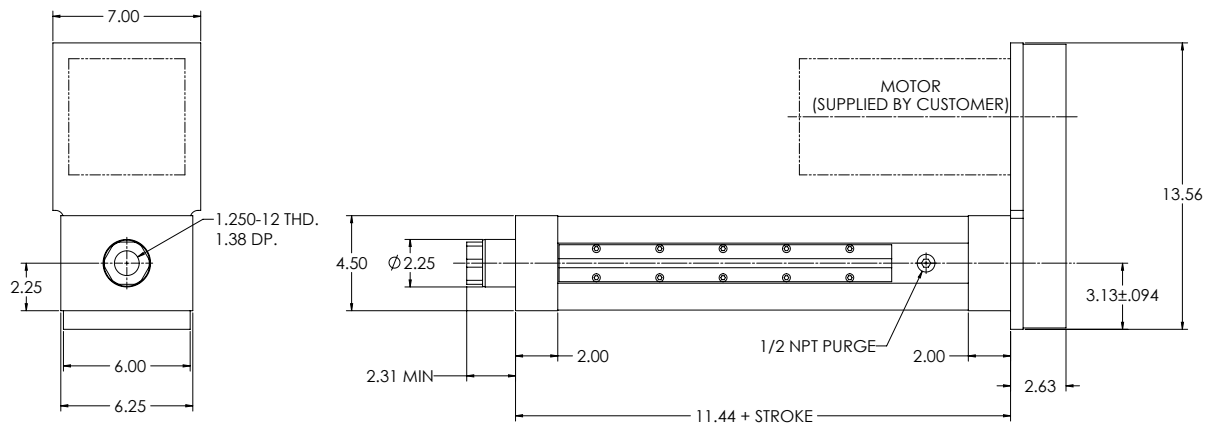
Dynamic Capacity: Speed Vs. Stroke



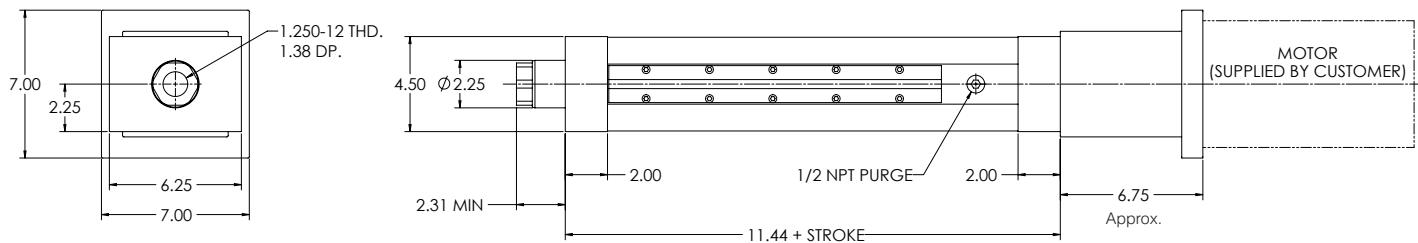
DIMENSIONED DRAWINGS FOR THE ELIMINATOR SS ACTUATOR

Dimensions in inches

U-Parallel Offset Motor Configuration



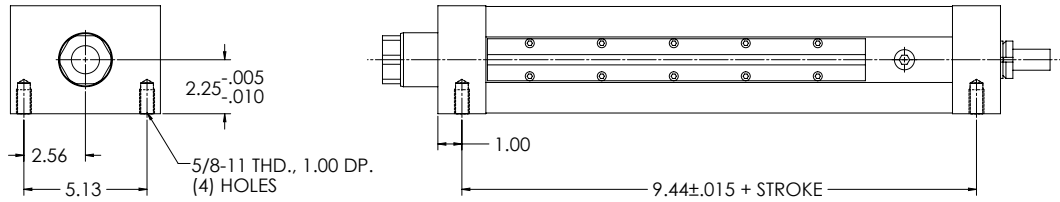
L-Inline Motor Configuration



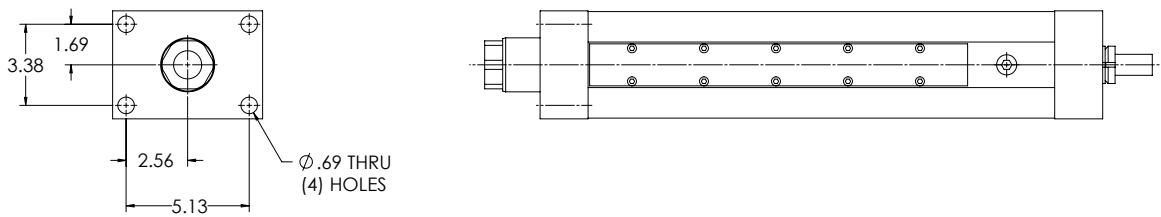
DIMENSIONED DRAWINGS FOR THE ELIMINATOR SS ACTUATOR

Dimensions in inches

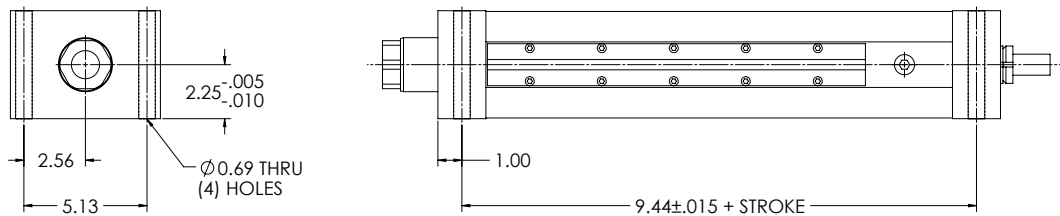
Bottom Mount Dimensions



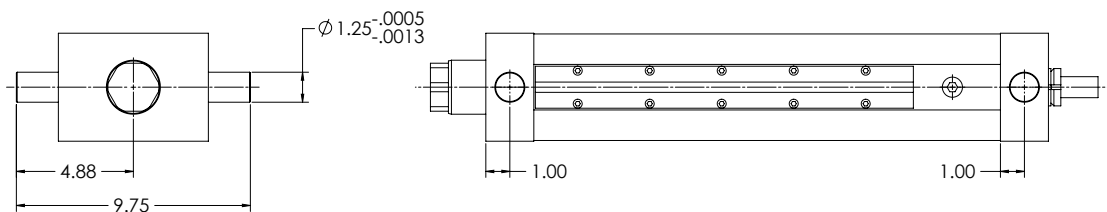
Front Flange Dimensions



Foot Mount Dimensions



Trunnion Mount Dimensions

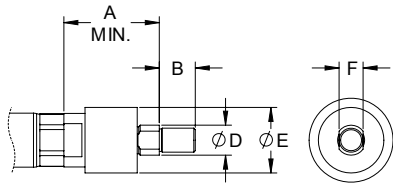


DIMENSIONED DRAWINGS FOR THE ELIMINATOR SS ACTUATOR

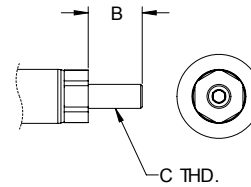
Dimensions in inches

Rod End Options

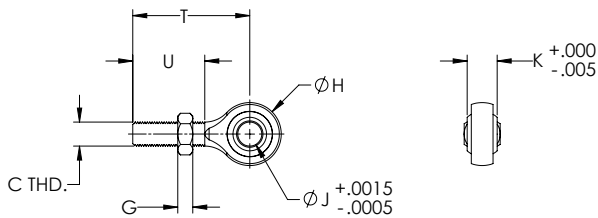
Self-Aligning Coupler



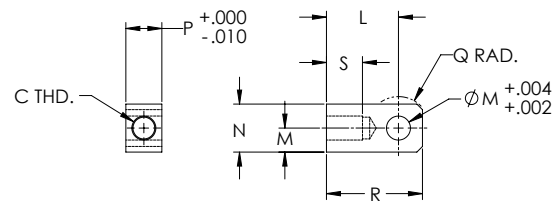
Male Thread



Spherical Rod Eye



Female Eye

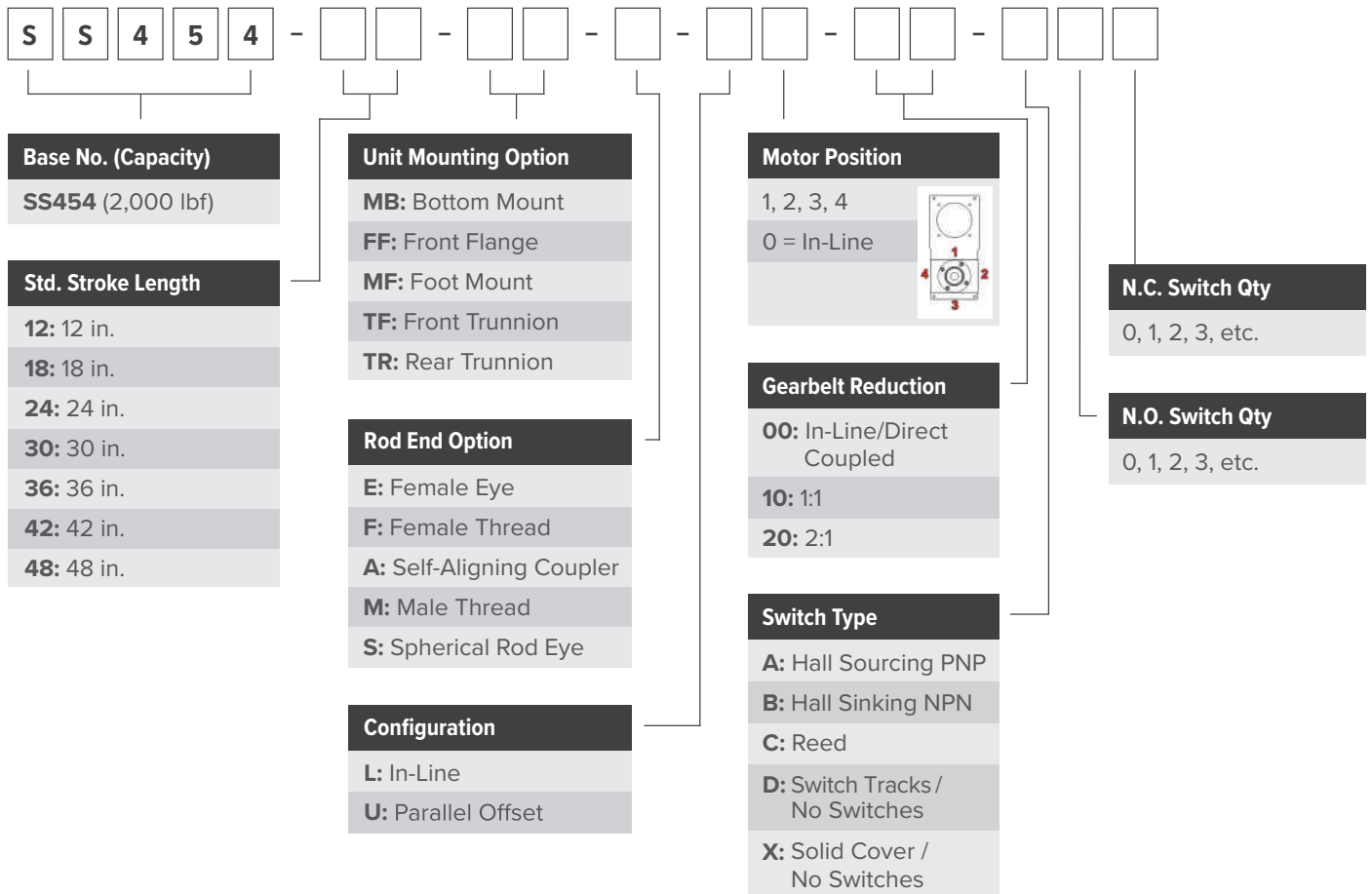


SS Rod End Dimensions

Model	A	B	C	D	E	F	G	H	J	K	L	M	N	P	Q	R	S	T	U
SS454	2.94	1.63	1 1/4-12	1.45	3.13	1.25	0.72	2.75	1.00	1.38	3.44	1.38	2.75	2.00	1.38	4.81	2.00	4.13	2.13

ORDERING GUIDE FOR THE ELIMINATOR SS ACTUATOR

Ordering Information



For custom stroke lengths, contact EDrive.