

Universal Actuator UA™

COST EFFECTIVE, GENERAL PURPOSE AUTOMATION SOLUTION

EDrive's Universal Actuator UA series is designed to easily drop into automation applications. These compact actuators feature an aluminum extrusion cylinder designed with industry-standard T-slots for quick mounting. Chrome piston with anti-rotation is standard and available in lengths up to 24 inches and speeds up to 50 in/sec. Quickly position limit switches along the cylinder. Ideal for a variety of industries and applications including Industrial Automation, Robotics, Packaging, Food, and Beverage.



Key Features:

- Rated thrust up to 500 lbf
- Velocity up to 50 in/sec
- Designed with T-slot bracketing for quick mounting
- Sealed from contamination (IP54)
- Adjustable limit switches available
- Piston with internal anti-rotation

Ideal for a Variety of Applications Including:

- Gating/Sorting/Diverting
- Assembly, Pick & Place
- Aligning, Product Changeover
- Conveyors, Fillers
- Pneumatic Replacement
- And More

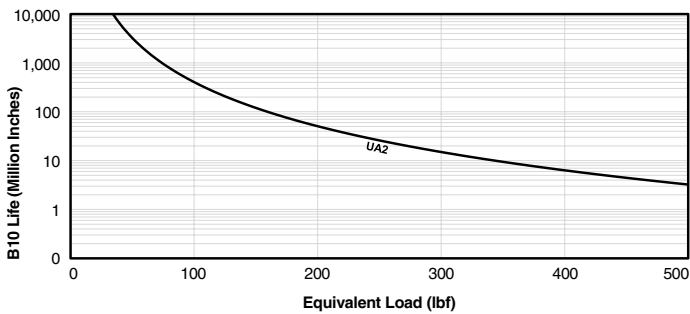
SPECIFICATION CHART FOR THE UNIVERSAL ACTUATOR UA

Model Number	Screw Code	Rated Thrust	Max. Velocity	Max. Stroke	Frame Size	Screw Lead	Backlash Max.	Max. Screw Speed	Max. Torque At Screw	Dynamic Capacity Per Million Revs	Dynamic Capacity Per Million Inches
		lbf	in/s	in	in	in	in	RPM	in-lb	lbf	lbf
UA2	AB2	500	50	24	2	0.5	0.010	6,000	44	1,002	738
UA2	AB5	500	16	24	2	0.2	0.010	4,800	18	1,221	714

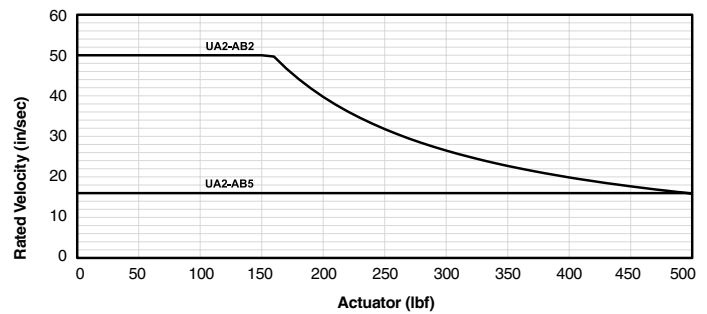
Model Number	Max. Motor Or Gearhead Pilot Supported	Inertia 1:1 Zero Stroke	Inertia 1:1 Per Inch Of Stroke	Inertia 2:1 Zero Stroke	Inertia 2:1 Per Inch Of Stroke	Inertia Inline Zero Stroke	Inertia Inline Per Inch Of Stroke	Weight "P1/P2" Mount Zero Stroke	Weight "L0" Mount Zero Stroke	Weight Per Inch Of Stroke
	in	lb-in ²	lb-in ²	lb-in ²	lb-in ²	lb-in ²	lb-in ²	lb	lb	lb
UA2	3.74	0.4	0.0016	0.21	0.0004	0.13	0.0016	5.75	5.5	0.5
UA2	3.74	0.41	0.0031	0.21	0.0008	0.13	0.0031	5.75	5.5	0.5

DATA CURVES FOR THE UNIVERSAL ACTUATOR UA

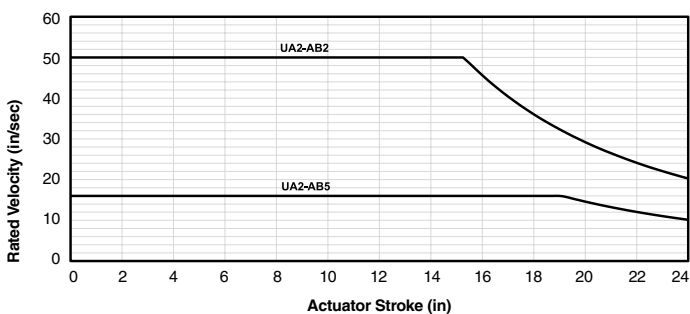
Dynamic Capacity: Life Vs. Load



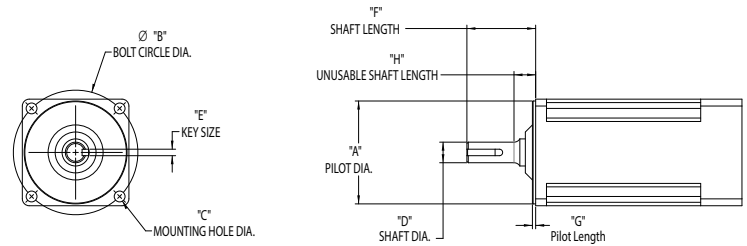
Force Vs. Speed



Speed Vs. Stroke



ORDERING GUIDE FOR THE UNIVERSAL ACTUATOR UA



Ordering Information

Ordering format: - - - -

UA Size
UA2

Stroke
06 inch
12 inch
18 inch
24 inch

Motor Code
See Motor Codes Below

Motor Configuration
P1 Offset Parallel 1:1
P2 Offset Parallel 2:1
L0 Inline Direct Coupled

Screw Code	Dia.	Lead	Type	Lead Accuracy
AB2	1/2"	0.5"	Ball Screw	0.003 in/ft
AB5	5/8"	0.2"	Ball Screw	0.003 in/ft

MOTOR CODES

Motor Code	"A" Pilot Diameter	"B" Bolt Circle Diameter	"C" Mounting Hole Diameter		"D" Shaft Diameter (1)	"E" Key Size	"F" Shaft Length		"G" Pilot Length	"H" Unusable Shaft Length
			Min	Max			Min	Max		
GDH	1.500 in	2.625 in	0.169 in	0.228 in	1/4 in	N/A	0.781 in	0.844 in	0.20 in	0.20 in
PTD	1.500 in	2.625 in	0.169 in	0.228 in	1/2 in	1/8 in	1.25 in	1.625 in	0.20 in	0.20 in
DBC	2.875 in	3.875 in	0.209 in	0.248 in	1/2 in	1/8 in	1.188 in	1.575 in	0.20 in	0.375 in
PBD	2.875 in	3.875 in	0.209 in	0.248 in	1/2 in	5 mm	1.188 in	1.575 in	0.20 in	0.375 in
DCB	2.875 in	3.875 in	0.209 in	0.248 in	14 mm	5 mm	1.188 in	1.575 in	0.20 in	0.375 in
AGP	2.875 in	3.875 in	0.209 in	0.248 in	5/8 in	3/16 in	1.188 in	1.575 in	0.20 in	0.375 in
MPC	40 mm	63 mm	5.3 mm	6.3 mm	9 mm	3 mm	19 mm	31 mm	4 mm	4 mm
HCM	40 mm	63 mm	4.3 mm	5.3 mm	9 mm	3 mm	19 mm	31 mm	4 mm	4 mm
AMH	50 mm	70 mm	4.3 mm	6.0 mm	11 mm	4 mm	25 mm	31 mm	5 mm	5 mm
PCA	50 mm	70 mm	4.3 mm	6.0 mm	12 mm	4 mm	25 mm	31 mm	5 mm	5 mm
MCB	50 mm	70 mm	4.3 mm	6.0 mm	14 mm	5 mm	25 mm	31 mm	5 mm	5 mm
CMD	50 mm	70 mm	4.3 mm	6.0 mm	16 mm	5 mm	35 mm	41 mm	5 mm	5 mm
BDG	50 mm	95 mm	6.3 mm	7.3 mm	14 mm	5 mm	25 mm	31 mm	5 mm	5 mm
AHB	60 mm	75 mm	5.3 mm	6.5 mm	11 mm	4 mm	22 mm	31 mm	4 mm	4 mm
MBG	60 mm	75 mm	5.3 mm	6.5 mm	14 mm	5 mm	22 mm	31 mm	4 mm	4 mm
HPM	70 mm	90 mm	6.3 mm	7.2 mm	19 mm	6 mm	34 mm	41 mm	4 mm	4 mm
CGM	80 mm	100 mm	6.3 mm	7.3 mm	16 mm	5 mm	35 mm	41 mm	9 mm	15 mm
PBT	80 mm	100 mm	6.3 mm	7.3 mm	14 mm	5 mm	30 mm	37 mm	9 mm	15 mm
TMB	80 mm	100 mm	6.3 mm	7.3 mm	19 mm	6 mm	40 mm	46 mm	9 mm	15 mm
PGH	80 mm	100 mm	6.3 mm	7.3 mm	22 mm	6 mm	42 mm	48 mm	9 mm	15 mm
HGM	95 mm	115 mm	8.3 mm	10.3 mm	19 mm	6 mm	35 mm	41 mm	9 mm	15 mm
PTB	95 mm	115 mm	8.3 mm	10.3 mm	19 mm	6 mm	52 mm	58 mm	9 mm	15 mm

(1) Max. Shaft for 2:1 is 16 mm (0.63 in)

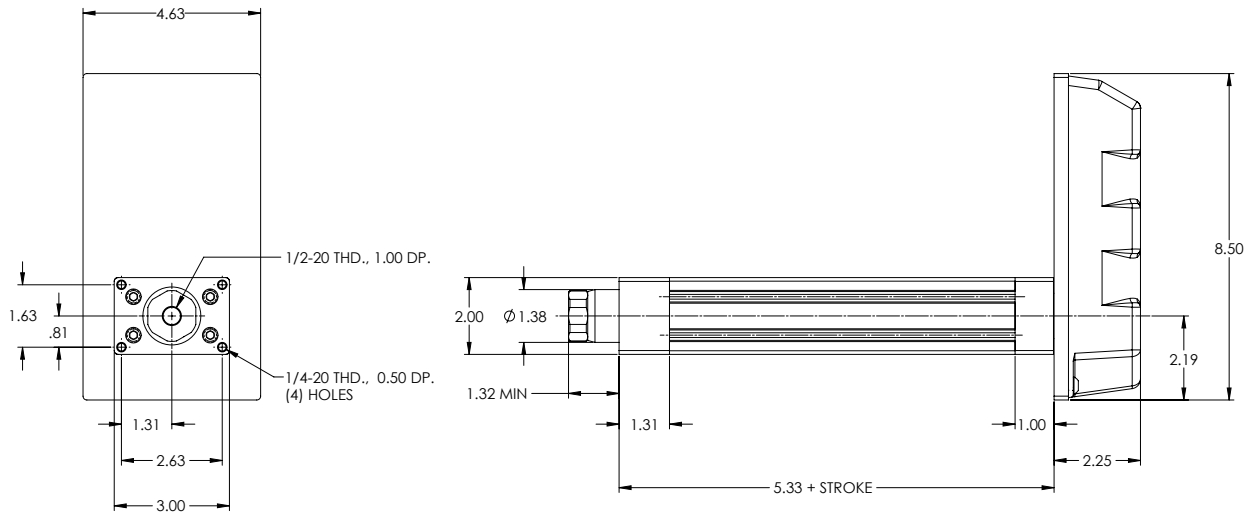
ACCESSORIES

Part Number	Description	Part Number	Description	Part Number	Description
D06-UA2	Reed Switch NO	RC-UA2	Rear Clevis	SRE-UA2	Spherical Rod Eye
T06-UA2	Reed Switch NC	FF-UA2	Front Flange Plate	MTE-UA2	Male Thread End
G06-UA2	Sinking Switch NO (NPN)	TB-UA2	Trunnion Brackets (Pair)	FRE-UA2	Female Rod Eye
J06-UA2	Sinking Switch NC (NPN)	CB-UA2	Clevis Bracket	SAC-UA2	Self Aligning Coupler
K06-UA2	Sourcing Switch NO (PNP)	EB-UA2	Eye Bracket	CRE-UA2	Clevis Rod End
Q06-UA2	Sourcing Switch NC (PNP)	CP-UA2	Clevis Pin	ABC-UA2	Aluminum Belt Cover
		1/4-UAN	1/4-20 T-Nut		

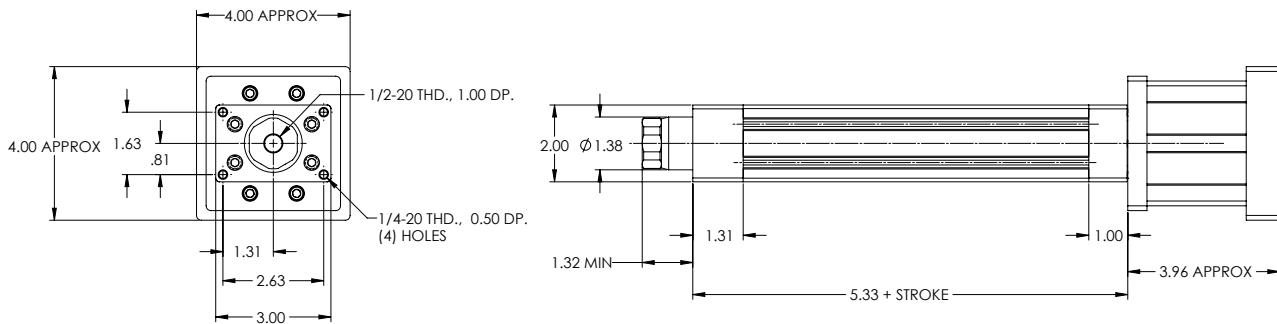
Accessories sold separately

DIMENSIONED DRAWINGS FOR THE UNIVERSAL ACTUATOR UA

Parallel Offset Configuration

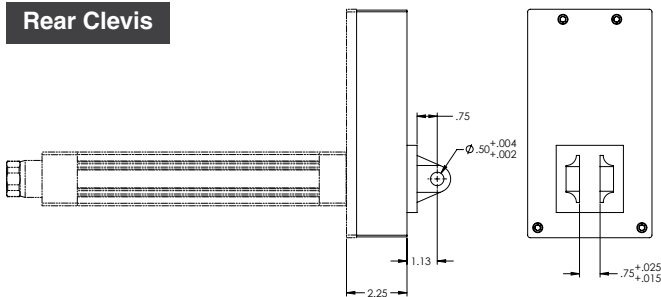


Inline Configuration

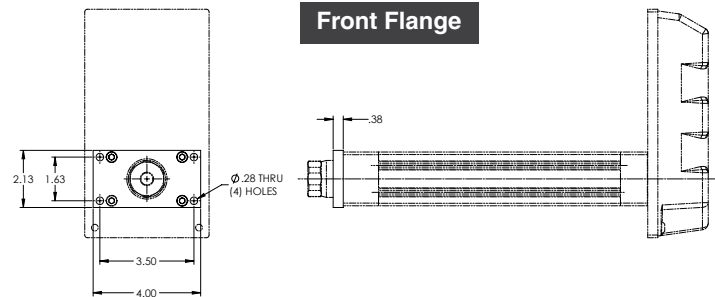


UA Mounting Accessories

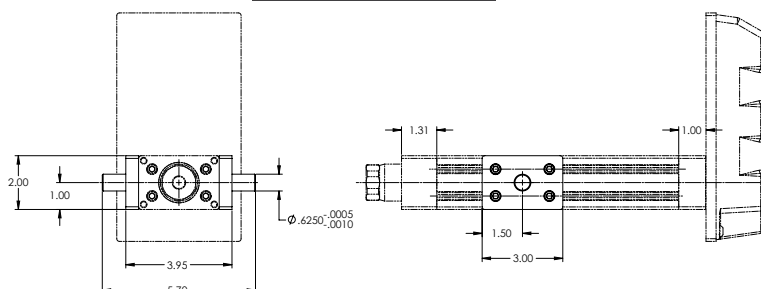
Rear Clevis



Front Flange



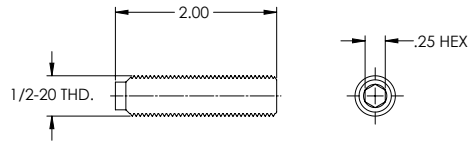
Trunnion Brackets



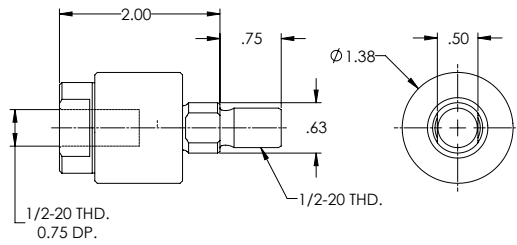
DIMENSIONED DRAWINGS FOR THE UNIVERSAL ACTUATOR UA

Rod End Accessories

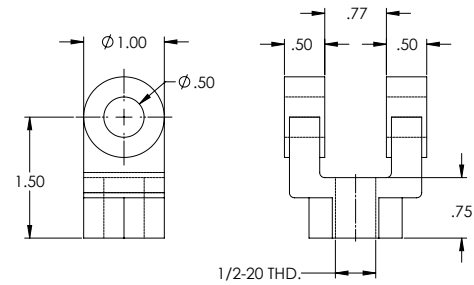
Male Thread



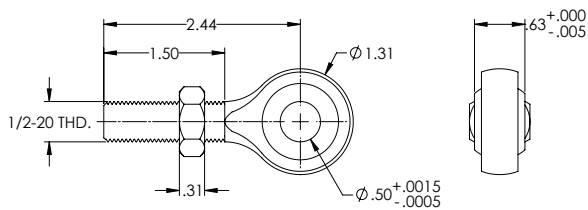
Self-Aligning Coupler *Includes Male Thread*



Rod Clevis *Includes Male Thread and Jam Nut*



Spherical Rod Eye



Female Eye *Includes Male Thread and Jam Nut*

