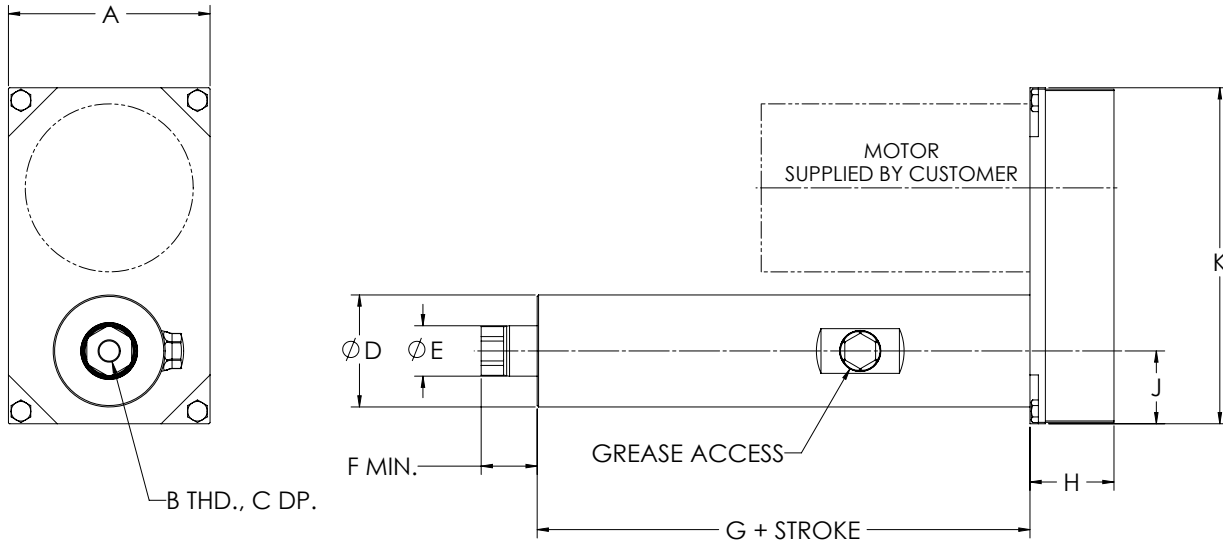
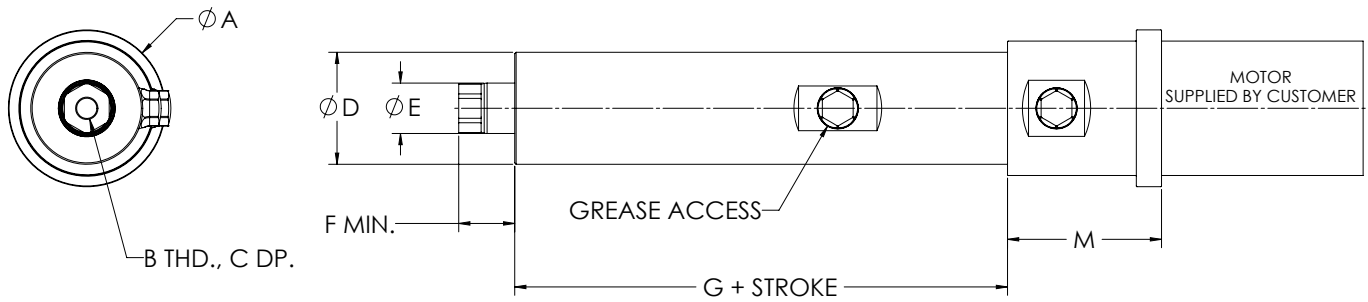


# DIMENSIONED DRAWINGS FOR THE TAG VP ACTUATOR

## U-Parallel Offset Motor Configuration



## L-Inline Motor Configuration



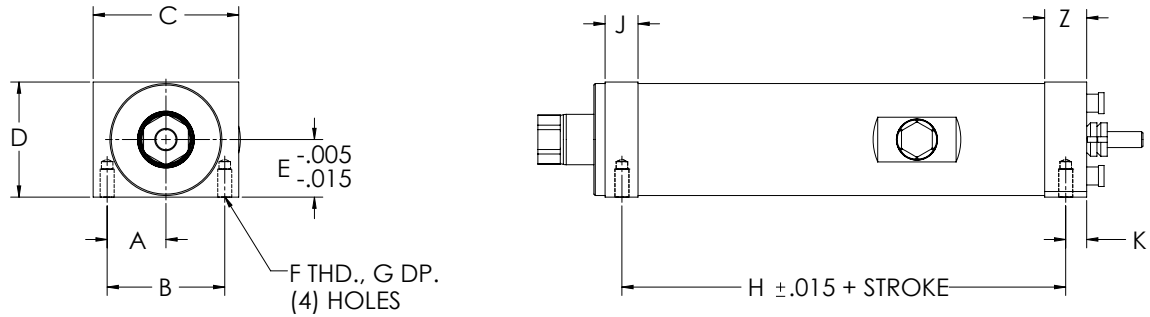
"M" length may vary depending on motor or gearbox.

## VP U-Parallel Offset, L-Inline and Rear Clevis Dimensions

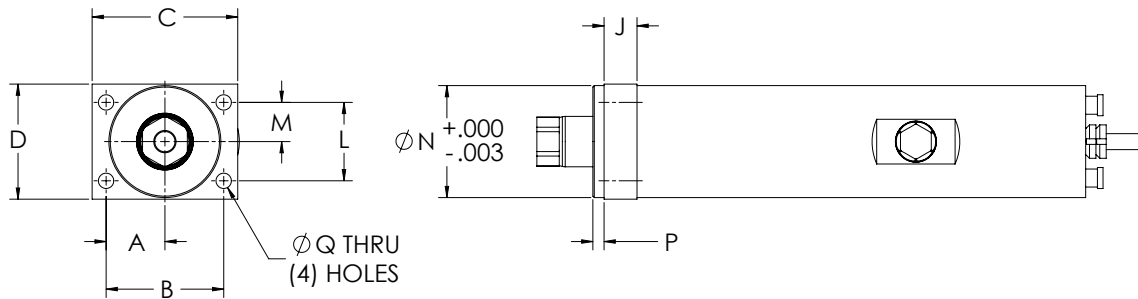
Model	A	B	C	D	E	F	G	H	J	K	L	M	N	P	Q	R
VP204	4.50	1/2-20	0.63	2.50	1.13	1.25	5.03	2.03	1.63	7.50	3.44	3.69	0.50	0.75	1.13	90
VP209	4.50	1/2-20	0.63	2.50	1.13	1.25	5.03	2.03	1.63	7.50	3.44	3.69	0.50	0.75	1.13	90
VP305	5.50	3/4-16	0.88	3.50	1.75	1.50	7.28	2.47	2.44	10.13	3.72	3.72	0.75	1.25	1.88	90
VP310	5.50	3/4-16	0.88	3.50	1.75	1.50	7.28	2.47	2.44	10.13	3.72	3.72	0.75	1.25	1.88	90
VP320	5.50	3/4-16	0.88	3.50	1.75	1.50	7.28	2.47	2.44	10.13	3.72	3.72	0.75	1.25	1.88	90

# DIMENSIONED DRAWINGS FOR THE TAG VP ACTUATOR

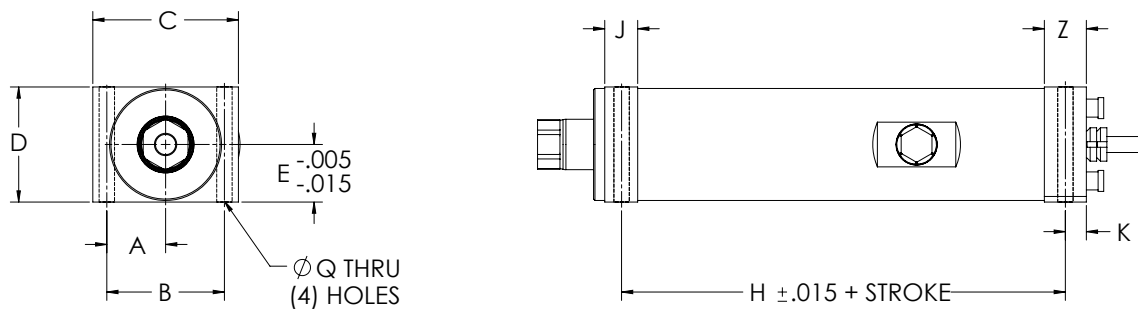
## Bottom Mount Dimensions



## Front Flange Dimensions



## Foot Mount Dimensions



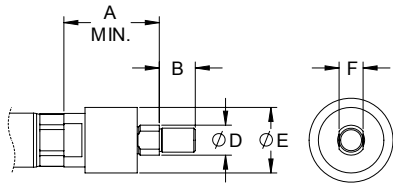
## VP Unit Mounting Dimensions

Model	A	B	C	D	E	F	G	H	J	K	L	M	N	P	Q	Z
VP2	1.31	2.63	3.25	2.57	1.29	5/16-18	0.63	3.84	0.74	0.56	1.75	0.88	2.50	0.25	0.34	0.92
VP3	1.88	3.75	4.50	3.63	1.81	3/8-16	0.75	5.78	1.00	0.75	2.63	1.31	3.50	0.25	0.41	1.25

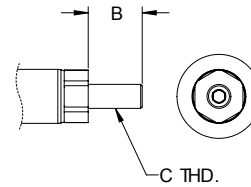
# DIMENSIONED DRAWINGS FOR THE TAG VP ACTUATOR

## Rod End Options

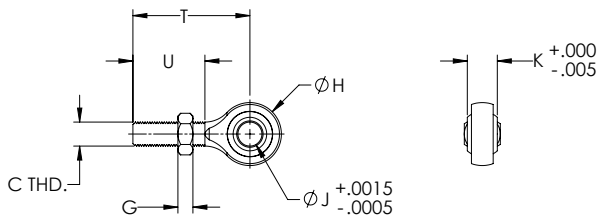
### Self-Aligning Coupler



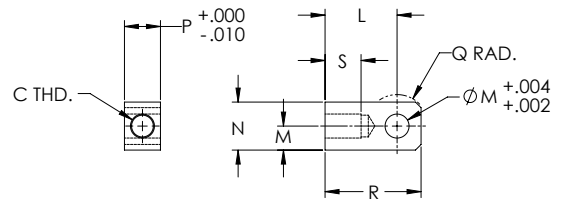
### Male Thread



### Spherical Rod Eye



### Female Eye



## VP Rod End Dimensions

Model	A	B	C	D	E	F	G	H	J	K	L	M	N	P	Q	R	S	T	U
VP2	2.00	0.75	1/2-20	0.63	1.37	0.50	0.31	1.31	0.50	0.63	1.50	0.50	1.00	0.75	0.63	2.00	0.75	2.44	1.50
VP3	2.38	1.13	3/4-16	0.97	1.75	0.88	0.42	1.75	0.75	0.88	2.06	0.75	1.50	1.25	0.88	2.81	1.13	2.88	1.75