

SCREWS AND NUTS

Metric Screws & Nuts



www.joycedayton.com

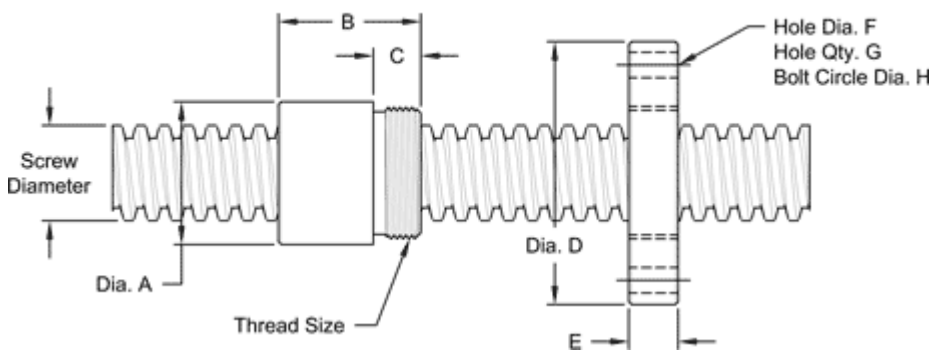


TR20-5 SINGLE LEAD TRAPEZOIDAL

This 20 mm. diameter single lead metric (trapezoidal) screw has a 5 mm lead. It is available in alloy steel or stainless steel material with corresponding aluminum bronze nuts. Choose from right-hand or left-hand threads.

METRIC SCREW SPECIFICATIONS	RH	LH
ALLOY STEEL SCREW PART NO.	TS 020 R 005 A	TS 020 L 005 A
STAINLESS STEEL SCREW PART NO.	TS 020 R 005 S	TS 020 L 005 S
THREAD FORM	TRAPEZOIDAL	
SCREW DIAMETER - TURNS/MM	TR 20 - 5	
LEAD	5 MM.	
ROOT DIAMETER	14.03 MM.	
SCREW WEIGHT	2.0 KG /M. (1.34 LB./FT.)	
TORQUE TO RAISE 1 KN	1.928 NM (17.1 IN.-LB.)	
MAXIMUM SCREW LENGTH	3.66 M. (12 FT.)	

Nut and Flange Specifications



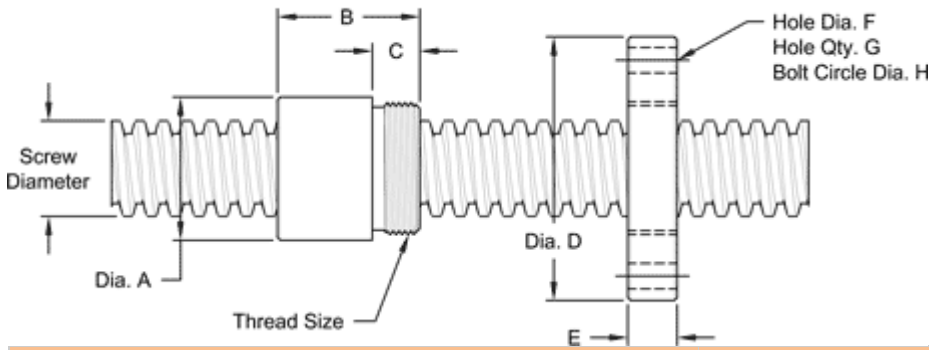
NUT SPECIFICATIONS	RH	LH
NUT PART NO.	TN 020 R 005 B	TN 020 L 005 B
NUT WITH FLANGE PART NO.	TF 020 R 005	TF 020 L 005
DYNAMIC LOAD CAPACITY (LBS)	10 KN (2,248 LB.)	
STATIC LOAD CAPACITY KG. (LBS)	45 KN (10,116 LB.)	
EFFICIENCY	41.8%	
MATERIAL	BRONZE	
NOMINAL DIAMETER "A"	34 MM.	
NUT LENGTH "B"	32 MM.	
THREAD LENGTH "C"	13 MM.	
THREAD SIZE	M30 X 1.5	
FLANGE PART NO.	FL-3000	
FLANGE DIAMETER "D"	75 MM.	
FLANGE THICKNESS "E"	14 MM.	
FLANGE HOLE DIAMETER "F"	7 MM.	
NUMBER OF HOLES IN FLANGE "G"	4	
FLANGE BOLT CIRCLE "H"	60 MM.	
FLANGE MATERIAL	BLACK OXIDE COATED STEEL	

TR22-5 SINGLE LEAD TRAPEZOIDAL

This 22 mm. diameter single lead metric (trapezoidal) screw has a 6 mm lead. It is available in alloy steel or stainless steel material with corresponding aluminum bronze nuts. Choose from right-hand or left-hand threads.

METRIC SCREW SPECIFICATIONS	RH	LH
ALLOY STEEL SCREW PART NO.	TS 022 R 005 A	TS 022 L 005 A
STAINLESSS STEEL SCREW PART NO.	TS 022 R 005 S	TS 022 L 005 S
THREAD FORM	TRAPEZOIDAL	
SCREW DIAMETER - TURNS/MM	TR 22 - 5	
LEAD	5 MM.	
ROOT DIAMETER	16.03 MM.	
SCREW WEIGHT	2.6 KG/M. (1.74 LB./FT.)	
TORQUE TO RAISE 1 KN	2.051 NM (18.2 IN.-LB.)	
MAXIMUM SCREW LENGTH	3.66 M. (12 FT.)	

Nut and Flange Specifications



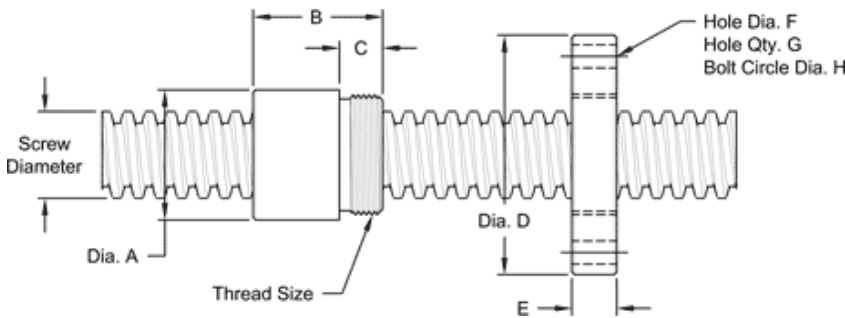
NUT SPECIFICATIONS	RH	LH
NUT PART NO.	TN 022 R 005 B	TN 022 L 005 B
NUT WITH FLANGE PART NO.	TF 022 R 005	TF 022 L 005
DYNAMIC LOAD CAPACITY (LBS)	16.8 KN (3,788 LB.)	
STATIC LOAD CAPACITY KG. (LBS)	48.5 KN (10,900 LB.)	
EFFICIENCY	39.2%	
MATERIAL	BRONZE	
NOMINAL DIAMETER "A"	45 MM.	
NUT LENGTH "B"	45 MM.	
THREAD LENGTH "C"	15 MM.	
THREAD SIZE	M40 X 1.5	
FLANGE PART NO.	FL-4000	
FLANGE DIAMETER "D"	85 MM.	
FLANGE THICKNESS "E"	16 MM.	
FLANGE HOLE DIAMETER "F"	7 MM.	
NUMBER OF HOLES IN FLANGE "G"	4	
FLANGE BOLT CIRCLE "H"	70 MM.	
FLANGE MATERIAL	BLACK OXIDE COATED STEEL	

TR26-6 SINGLE LEAD TRAPEZOIDAL

This 26 mm. diameter single lead metric (trapezoidal) screw has a 6 mm lead. It is available in alloy steel or stainless steel material with corresponding aluminum bronze nuts. Choose from right-hand or left-hand threads.

METRIC SCREW SPECIFICATIONS	RH	LH
ALLOY STEEL SCREW PART NO.	TS 026 R 006 A	TS 026 L 006 A
STAINLESS STEEL SCREW PART NO.	TS 025 R 006 S	TS 026 L 006 S
THREAD FORM	TRAPEZOIDAL	
SCREW DIAMETER - TURNS/MM	TR 26 - 6	
LEAD	6 MM.	
ROOT DIAMETER	18.48 MM.	
SCREW WEIGHT	3.2 KG./M. (2.15 LB./FT.)	
TORQUE TO RAISE 1 KN	2.435 NM (21.6 IN.-LB.)	
MAXIMUM SCREW LENGTH	3.66 M. (12 FT.)	

Nut and Flange Specifications



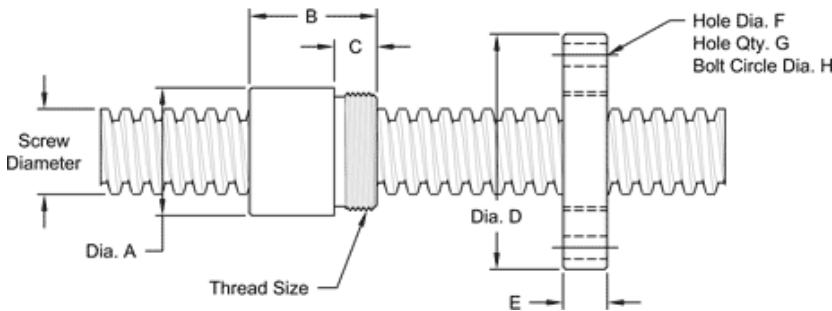
NUT SPECIFICATIONS	RH	LH
NUT PART NO.	TN 026 R 006 B	TN 026 L 006 B
NUT WITH FLANGE PART NO.	TF 026 R 006	TF 026 L 006
DYNAMIC LOAD CAPACITY (LBS)	22.4 KN (5,000 LB.)	
STATIC LOAD CAPACITY KG. (LBS)	48.5 KN (10,900 LB.)	
EFFICIENCY	39.6%	
MATERIAL	BRONZE	
NOMINAL DIAMETER "A"	45 MM.	
NUT LENGTH "B"	45 MM.	
THREAD LENGTH "C"	15 MM.	
THREAD SIZE	M40 X 1.5	
FLANGE PART NO.	FL-4000	
FLANGE DIAMETER "D"	85 MM.	
FLANGE THICKNESS "E"	16 MM.	
FLANGE HOLE DIAMETER "F"	7 MM.	
NUMBER OF HOLES IN FLANGE "G"	4	
FLANGE BOLT CIRCLE "H"	70 MM.	
FLANGE MATERIAL	BLACK OXIDE COATED STEEL	

TR 30-6 SINGLE LEAD TRAPEZOIDAL

This 30 mm. diameter single lead metric (trapezoidal) screw has a 6 mm lead. It is available in alloy steel or stainless steel material with corresponding aluminum bronze nuts. Choose from right-hand or left-hand threads.

METRIC SCREW SPECIFICATIONS	RH	LH
ALLOY STEEL SCREW PART NO.	TS 030 R 006 A	TS 030 L 006 A
STAINLESS STEEL SCREW PART NO.	TS 030 L 006 S	TS 030 L 006 S
THREAD FORM	TRAPEZOIDAL	
SCREW DIAMETER - TURNS/MM	TR 30 - 6	
LEAD	6 MM.	
ROOT DIAMETER	22.47 MM.	
SCREW WEIGHT	5.01 KG./M. (3.36 LB./FT.)	
TORQUE TO RAISE 1 KN	2.680 NM (23.7 IN.-LB.)	
MAXIMUM SCREW LENGTH	3.66 M. (12 FT.)	

Nut and Flange Specifications



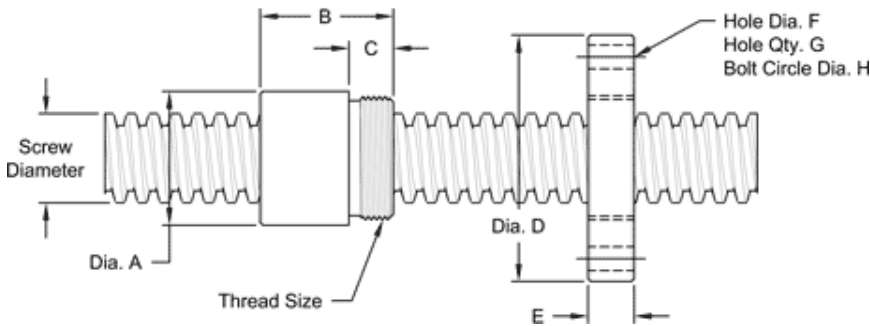
NUT SPECIFICATIONS	RH	LH
NUT PART NO.	TN 030 R 006 B	TN 030 L 006 B
NUT WITH FLANGE PART NO.	TF 030 R 006	TF 030 L 006
DYNAMIC LOAD CAPACITY (LBS)	25 KN (5,620 LB.)	
STATIC LOAD CAPACITY KG. (LBS)	80 KN (17,985 LB.)	
EFFICIENCY	35.9%	
MATERIAL	BRONZE	
NOMINAL DIAMETER "A"	60 MM.	
NUT LENGTH "B"	60 MM.	
THREAD LENGTH "C"	20 MM.	
THREAD SIZE	M55 X 1.5	
FLANGE PART NO.	FL-5500	
FLANGE DIAMETER "D"	120 MM.	
FLANGE THICKNESS "E"	21 MM.	
FLANGE HOLE DIAMETER "F"	11 MM.	
NUMBER OF HOLES IN FLANGE "G"	4	
FLANGE BOLT CIRCLE "H"	90 MM.	
FLANGE MATERIAL	BLACK OXIDE COATED STEEL	

TR40-9 SINGLE LEAD TRAPEZOIDAL

This 40 mm. diameter single lead metric (trapezoidal) screw has a 9 mm lead. It is available in alloy steel or stainless steel material with corresponding aluminum bronze nuts. Choose from right-hand or left-hand threads.

METRIC SCREW SPECIFICATIONS	RH	LH
ALLOY STEEL SCREW PART NO.	TS 040 R 009 A	TS 040 L 009 A
STAINLESS STEEL SCRW PART NO.	TS 040 R 009 S	TS 040 L 009 S
THREAD FORM	TRAPEZOIDAL	
SCREW DIAMETER - TURNS/MM	TR 40 - 9	
LEAD	9 MM.	
ROOT DIAMETER	29.37 MM.	
SCREW WEIGHT	8.16 KG./M. (5.48 LB./FT.)	
TORQUE TO RAISE 1 KN	3.709 NM (32.8 IN.-LB.)	
MAXIMUM SCREW LENGTH	3.66 M. (12 FT.)	

Nut and Flange Specifications



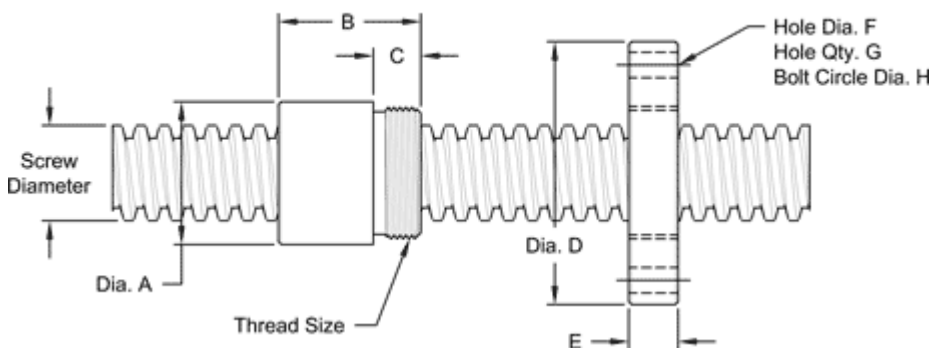
NUT SPECIFICATIONS	RH	LH
NUT PART NO.	TN 040 R 009 B	TN 040 L 009 B
NUT WITH FLANGE PART NO.	TF 040 R 009	TF 040 L 009
DYNAMIC LOAD CAPACITY (LBS)	50 KN (11,250 LB.)	
STATIC LOAD CAPACITY KG. (LBS)	102 KN (23,000 LB.)	
EFFICIENCY	38.9%	
MATERIAL	BRONZE	
NOMINAL DIAMETER "A"	60 MM.	
NUT LENGTH "B"	60 MM.	
THREAD LENGTH "C"	20 MM.	
THREAD SIZE	M55 X 1.5	
FLANGE PART NO.	FL-5500	
FLANGE DIAMETER "D"	120 MM.	
FLANGE THICKNESS "E"	21 MM.	
FLANGE HOLE DIAMETER "F"	11 MM.	
NUMBER OF HOLES IN FLANGE "G"	4	
FLANGE BOLT CIRCLE "H"	90 MM.	
FLANGE MATERIAL	BLACK OXIDE COATED STEEL	

TR55 - 12 SINGLE LEAD TRAPEZOIDAL

This 55 mm. diameter single lead metric (trapezoidal) screw has a 12 mm lead. It is available in alloy steel or stainless steel material with corresponding aluminum bronze nuts. Choose from right-hand or left-hand threads.

METRIC SCREW SPECIFICATIONS	RH	LH
ALLOY STEEL SCREW PART NO.	TS 055 R 012 A	TS 055 L 012 A
STAINLESS STEEL SCREW PART NO.	TS 055 R 012 S	TS 055 L 009 S
THREAD FORM	TRAPEZOIDAL	
SCREW DIAMETER - TURNS/MM	TR 55 - 12	
LEAD	12 MM.	
ROOT DIAMETER	41.27 MM.	
SCREW WEIGHT (LB/FT)	14.7 KG./M. (9.9 LB./FT.)	
TORQUE TO RAISE 1 KN	5.044 NM (46.6 IN.-LB.)	
MAXIMUM SCREW LENGTH	3.66 M. (12 FT.)	

Nut and Flange Specifications



NUT SPECIFICATIONS	RH	LH
NUT PART NO.	TN 055 R 012 B	TN 055 L 012 B
NUT WITH FLANGE PART NO.	TF 055 R 012	TF 055 L 012
DYNAMIC LOAD CAPACITY (LBS)	100 KN (22,481 LB.)	
STATIC LOAD CAPACITY KG. (LBS)	173.5 KN (39,000 LB.)	
EFFICIENCY	38.2%	
MATERIAL	BRONZE	
NOMINAL DIAMETER "A"	80 MM.	
NUT LENGTH "B"	75 MM.	
THREAD LENGTH "C"	25 MM.	
THREAD SIZE	M72 X 2.0	
FLANGE PART NO.	FL-7200	
FLANGE DIAMETER "D"	142 MM.	
FLANGE THICKNESS "E"	26 MM.	
FLANGE HOLE DIAMETER "F"	17 MM.	
NUMBER OF HOLES IN FLANGE "G"	4	
FLANGE BOLT CIRCLE "H"	112 MM.	
FLANGE MATERIAL	BLACK OXIDE COATED STEEL	