

# SCREWS AND NUTS

Machine Screws & Nuts



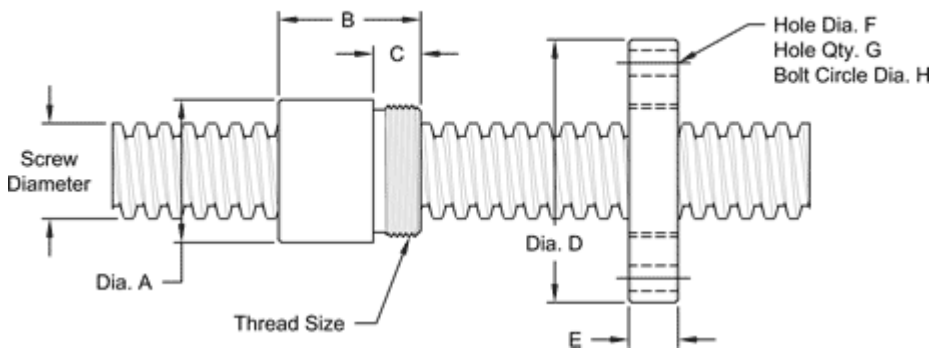
[www.joycedayton.com](http://www.joycedayton.com)

## 1/2" - 8 SINGLE LEAD STUB ACME

This 1/2 - 8 stub acme machine screw is available in both alloy steel and stainless steel with a corresponding aluminum bronze nut. Right hand threads are available.

MACHINE SCREW SPECIFICATIONS	RH
ALLOY STEEL SCREW PART NO.	SS 050 R 013 A
STAINLESS STEEL SCREW PART NO.	SS 050 R 013 S
THREAD FORM	STUB ACME
SCREW DIAMETER-TURNS / INCH	1/2 - 8
PITCH / LEAD	0.125 IN.
ROOT DIAMETER	0.38 IN.
SCREW WEIGHT (LB / FT)	0.53
TORQUE TO RAISE 1 POUND	0.050 IN - LB
MAXIMUM SCREW LENGTH	12 FEET

## Nut and Flange Specifications



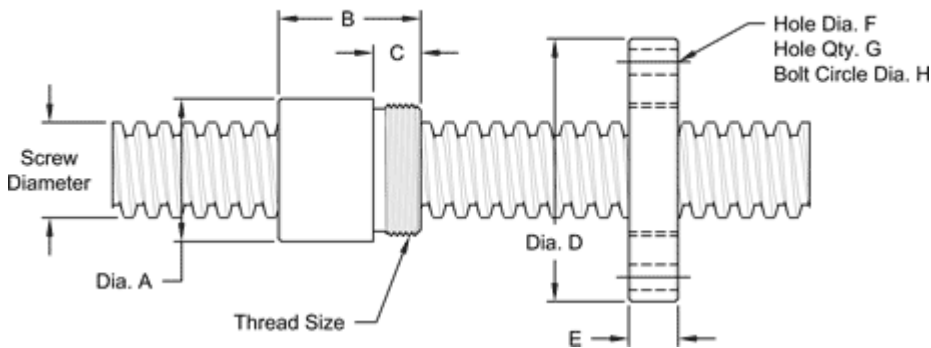
NUT SPECIFICATIONS	RH
NUT PART NO.	SN 050 R 013 B
NUT WITH FLANGE PART NO.	SF 050 R 013
DYNAMIC LOAD CAPACITY (LBS)	1,250
STATIC LOAD CAPACITY (LBS)	4,000
EFFICIENCY	40.5%
MATERIAL	BRONZE
NOMINAL DIAMETER "A"	1.12 IN.
NUT LENGTH "B"	0.75 IN.
THREAD LENGTH "C"	0.50 IN.
THREAD SIZE	0.937-16 UN
FLANGE PART NO.	FL-0937
FLANGE DIAMETER "D"	2.60 IN.
FLANGE THICKNESS "E"	0.53 IN.
FLANGE HOLE DIAMETER "F"	0.266 IN.
NUMBER OF HOLES IN FLANGE "G"	4
FLANGE BOLT CIRCLE "H"	2.090 IN.
FLANGE MATERIAL	STEEL

## 5/8" - 2 DOUBLE LEAD STUB ACME

This 5/8 – 2 double lead stub acme machine screw is available in alloy steel with a corresponding aluminum bronze nut. Right hand threads are available.

<b>MACHINE SCREW SPECIFICATIONS</b>	<b>RH</b>
<b>ALLOY STEEL SCREW PART NO.</b>	<b>SS 063 R 050 A</b>
THREAD FORM	STUB ACME
SCREW DIAMETER (TURNS / INCH)	5/8 - 2
PITCH / LEAD	0.250 IN. / 0.500 IN.
ROOT DIAMETER	0.426 IN.
SCREW WEIGHT (LB / FT)	0.85
TORQUE TO RAISE 1 POUND	0.120 IN.- LB..
MAXIMUM SCREW LENGTH	12 FEET

## Nut and Flange Specifications



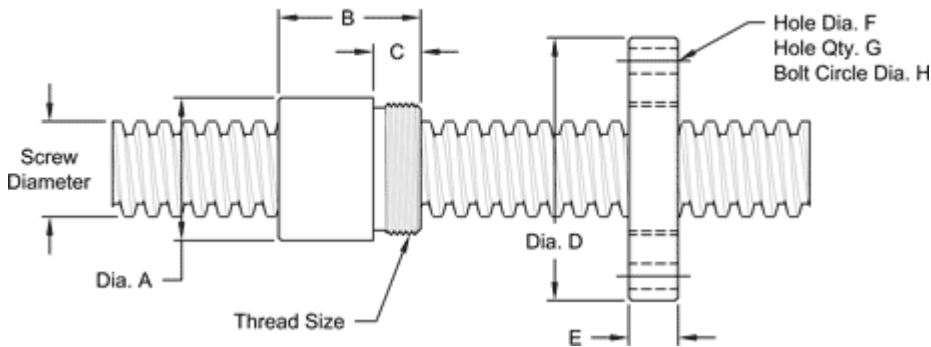
<b>NUT SPECIFICATIONS</b>	<b>RH</b>
<b>NUT PART NO.</b>	<b>SN 063 R 050 B</b>
<b>NUT WITH FLANGE PART NO.</b>	<b>SF 063 R 050</b>
DYNAMIC CAPACITY (LBS.)	1,953
STATIC CAPACITY (LBS.)	6,250
EFFICIENCY	67.6%
MATERIAL	BRONZE
NOMINAL DIAMETER "A"	1.12 IN.
NUT LENGTH "B"	1.00 IN.
THREAD LENGTH "C"	0.50 IN.
THREAD SIZE	0.937-16 UN
<b>FLANGE PART NO.</b>	<b>FL-0937</b>
FLANGE DIAMETER "D"	2.60 IN.
FLANGE THICKNESS "E"	0.53 IN.
FLANGE HOLE DIAMETER "F"	0.266 IN.
NUMBER OF HOLES IN FLANGE "G"	4
FLANGE BOLT CIRCLE "H"	2.090 IN.
FLANGE MATERIAL	BLACK OXIDE COATED STEEL

## 5/8" - 4 DOUBLE LEAD STUB ACME

This 5/8" – 4 double lead stub acme machine screw is available in both alloy steel and stainless steel with a corresponding aluminum bronze nut. Both right hand and left hand threads are available.

MACHINE SCREW SPECIFICATIONS	RH	LH
ALLOY STEEL SCREW PART NO.	SS 063 R 025 A	SS 063 L 025 A
STAINLESS STEEL SCREW PART NO.	SS 063 R 025 S	SS 063 L 025 S
THREAD FORM	STUB ACME	
SCREW DIAMETER TURNS / INCH	5/8 - 4	
PITCH / LEAD	0.125 IN./0.250 IN.	
ROOT DIAMETER	0.515 IN.	
SCREW WEIGHT (LB / FT)	0.85	
TORQUE TO RAISE 1 POUND	0.079 IN.- LB.	
MAXIMUM SCREW LENGTH	12 FEET	

## Nut and Flange Specifications



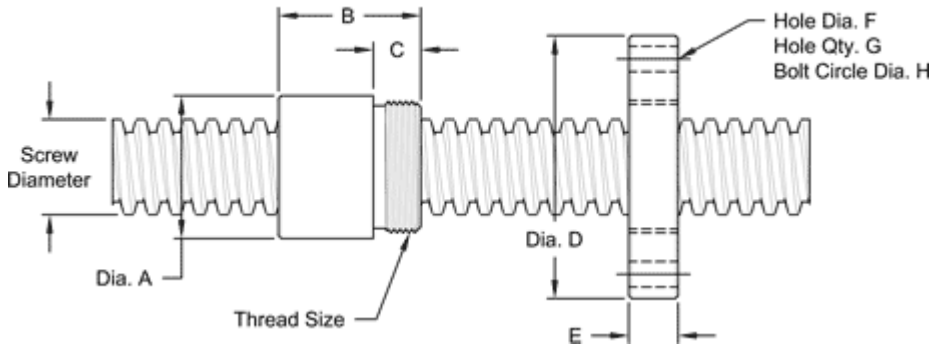
NUT SPECIFICATIONS	RH	LH
NUT PART NO.	SN 063 R 025 B	SN 063 L 025 B
NUT WITH FLANGE PART NO.	SF 063 R 025	SF 063 L 025
DYNAMIC LOAD CAPACITY (LBS.)	1,953	
STATIC LOAD CAPACITY (LBS.)	6,250	
EFFICIENCY	51.4%	
MATERIAL	BRONZE	
NOMINAL DIAMETER "A"	1.12 IN.	
NUT LENGTH "B"	1.00 IN.	
THREAD LENGTH "C"	0.50 IN.	
THREAD SIZE	0.937-16 UN	
FLANGE PART NO.	FL-0937	
FLANGE DIAMETER "D"	2.60 IN.	
FLANGE THICKNESS "E"	0.53 IN.	
FLANGE HOLE DIAMETER "F"	0.266 IN.	
NUMBER OF HOLES IN FLANGE "G"	4	
FLANGE BOLT CIRCLE "H"	2.090 IN.	
FLANGE MATERIAL	BLACK OXIDE COATED STEEL	

## 5/8" - 8 SINGLE LEAD STUB ACME

This 5/8 - 8 stub acme machine screw is available in both alloy steel and stainless steel with a corresponding aluminum bronze nut. Choose from right-hand threads or left-hand threads.

MACHINE SCREW SPECIFICATIONS	RH	LH
ALLOY STEEL SCREW PART NO.	SS 063 R 013 A	SS 063 L 013 A
STAINLESS STEEL SCREW PART NO.	SS 063 R 013 S	SS 063 L 013 S
THREAD FORM	STUB ACME	
SCREW DIAMETER - TURNS / INCH	5/8 - 8	
PITCH / LEAD	0.125 IN.	
ROOT DIAMETER	0.507 IN.	
SCREW WEIGHT (LB / FT)	0.85	
TORQUE TO RAISE 1 POUND	0.058 IN.-LB.	
MAXIMUM SCREW LENGTH	12 FEET	

## Nut and Flange Specifications



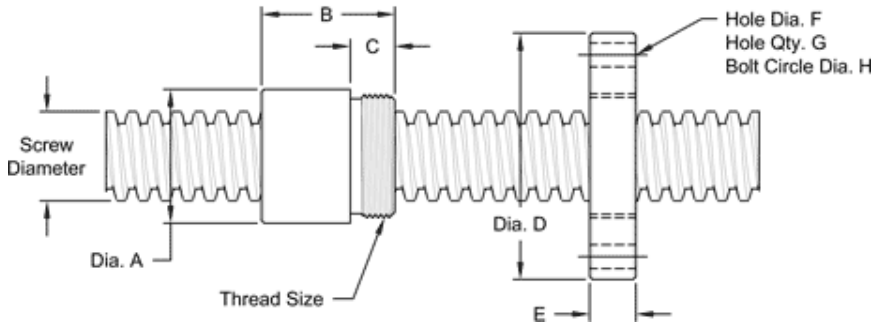
NUT SPECIFICATIONS	RH	LH
NUT PART NO.	SN 063 R 013 B	SN 063 L 013 B
FLANGED NUT PART NO	SF 063 R 013	SF 063 L 013
DYNAMIC LOAD CAPACITY (LBS)	1,953	
STATIC LOAD CAPACITY (LBS)	6,250	
EFFICIENCY	35.0 %	
MATERIAL	BRONZE	
NOMINAL DIAMETER "A"	1.12 IN.	
NUT LENGTH "B"	1.00 IN.	
THREAD LENGTH "C"	0.50 IN.	
THREAD SIZE	0.937-16 UN	
FLANGE PART NO.	FL-0937	
FLANGE DIAMETER "D"	2.60 IN.	
FLANGE THICKNESS "E"	0.53 IN.	
FLANGE HOLE DIAMETER "F"	0.266 IN.	
NUMBER OF HOLES IN FLANGE "G"	4	
FLANGE BOLT CIRCLE "H"	2.090 IN.	
FLANGE MATERIAL	BLACK OXIDE COATED STEEL	

## 3/4" -5 SINGLE LEAD ACME

This 3/4" – 5 single lead acme machine screw is available in both alloy steel and stainless steel with a corresponding aluminum bronze nut. Choose from right-hand or left-hand threads.

### Nut and Flange Specifications

MACHINE SCREW JACK SPECIFICATIONS	RH	LH
ALLOY STEEL SCREW PART NO.	AS 075 R 020 A	AS 075 L 020 A
STAINLESS STEEL SCREW PART NO.	AS 075 R 020 S	AS 075 L 020 S
THREAD FORM	ACME	
SCREW DIAMETER (TURNS / INCH)	3/4-5	
PITCH / LEAD	0.200 IN.	
ROOT DIAMETER	0.502 IN.	
SCREW WEIGHT (LB / FT)	1.2	
TORQUE TO RAISE 1 POUND	0.075 IN.- LB.	
MAXIMUM SCREW LENGTH	12 FEET	



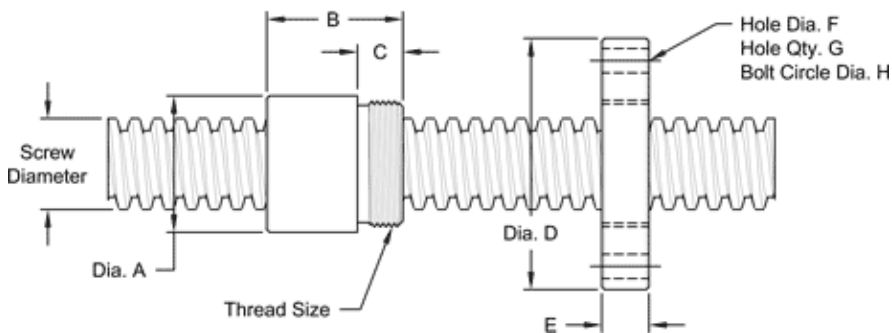
NUT SPECIFICATIONS	RH	LH
NUT PART NO.	AN 075 R 020 B	AN 075 L 020 B
NUT WITH FLANGE PART NO.	AF 075 R 020	AF 075 L 020
DYNAMIC LOAD CAPACITY (LBS.)	2,812	
STATIC LOAD CAPACITY (LBS.)	9,000	
EFFICIENCY	43.6%	
MATERIAL	BRONZE	
NOMINAL DIAMETER "A"	1.12 IN.	
NUT LENGTH "B"	1.25 IN.	
THREAD LENGTH "C"	0.50 IN.	
THREAD SIZE	1.000 -18 UN	
FLANGE PART NO.	FL-1000	
FLANGE DIAMETER "D"	2.63 IN.	
FLANGE THICKNESS "E"	0.53 IN.	
FLANGE HOLE DIAMETER "F"	0.266 IN.	
NUMBER OF HOLES IN FLANGE "G"	4	
FLANGE BOLT CIRCLE "H"	2.090 IN.	
FLANGE MATERIAL	BLACK OXIDE COATED STEEL	

## 7/8" - 2 DOUBLE LEAD ACME

This 7/8 – 2 Double lead acme machine screw is available in both alloy steel and stainless steel with a corresponding aluminum bronze nut. Choose from right-hand or left-hand threads.

MACHINE SCREW SPECIFICATIONS	RH	LH
ALLOY STEEL SCREW PART NO.	AS 088 R 050 A	AS 088 L 050 A
STAINLESS STEEL SCREW PART NO.	AS 088 R 050 S	AS 088 L 050 S
THREAD FORM	ACME	
SCREW DIAMETER (TURNS / INCH)	7/8" - 2	
PITCH / LEAD	0.250 IN./0.500 IN.	
ROOT DIAMETER	0.574 IN.	
SCREW WEIGHT (LB / FT)	1.7	
TORQUE TO RAISE 1 POUND	0.132 IN.- LB.	
MAXIMUM SCREW LENGTH	12 FEET	

## Nut and Flange Specifications



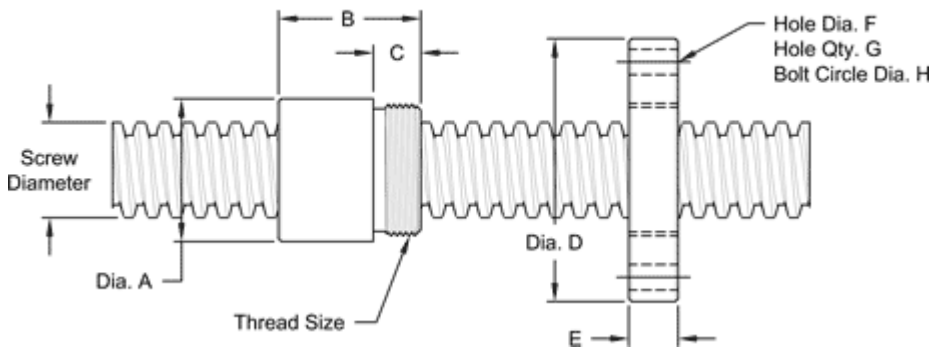
NUT SPECIFICATIONS	RH	LH
NUT PART NO.	AN 088 R 050 B	AN 088 L 050 B
NUT WITH FLANGE PART NO.	AF 088 R 050	AF 088 L 050
DYNAMIC LOAD CAPACITY (LBS.)	3,828	
STATIC LOAD CAPACITY (LBS.)	12,250	
EFFICIENCY	61.5%	
MATERIAL	BRONZE	
NOMINAL DIAMETER "A"	1.50 IN.	
NUT LENGTH "B"	1.50 IN.	
THREAD LENGTH "C"	0.50 IN.	
THREAD SIZE	1.375-16 UN	
FLANGE PART NO.	FL-1375	
FLANGE DIAMETER "D"	2.75 IN.	
FLANGE THICKNESS "E"	0.52 IN.	
FLANGE HOLE DIAMETER "F"	0.266 IN.	
NUMBER OF HOLES IN FLANGE "G"	4	
FLANGE BOLT CIRCLE "H"	2.260 IN.	
FLANGE MATERIAL	BLACK OXIDE COATED STEEL	

## 1" -1 MULTIPLE LEAD STUB ACME

This 1" – 1 multiple lead stub acme machine screw is available in alloy steel with a corresponding aluminum bronze nut. Right-hand threads are available.

MACHINE SCREW SPECIFICATIONS	RH
ALLOY STEEL SCREW PART NO.	SS 100 R 100 A
THREAD FORM	STUB ACME
SCREW DIAMETER (TURNS/INCH)	1-1
PITCH / LEAD	0.010IN./1.00 IN.
ROOT DIAMETER	.930 IN.
SCREW WEIGHT (LB / FT)	2.4
TORQUE TO RAISE 1 POUND	0.233 IN.- LB.
MAXIMUM SCREW LENGTH	12 FEET

### Nut and Flange Specifications



NUT SPECIFICATIONS	RH
NUT PART NO.	SN 100 R 100 B
NUT WITH FLANGE PART NO.	SN 100 R 100
DYNAMIC LOAD CAPACITY (LBS.)	5,000
STATIC LOAD CAPACITY (LBS.)	16,000
EFFICIENCY	69.70%
MATERIAL	BRONZE
NOMINAL DIAMETER "A"	1.50 IN.
NUT LENGTH "B"	1.50 IN.
THREAD LENGTH "C"	0.50 IN.
THREAD SIZE	1.375-16 UN
FLANGE PART NUMBER	FL-1375
FLANGE DIAMETER "D"	2.75 IN.
FLANGE THICKNESS "E"	0.52 IN.
FLANGE HOLE DIAMETER "F"	0.266 IN.
NUMBER OF HOLES IN FLANGE "G"	4
FLANGE BOLT CIRCLE "H"	2.260 IN.
FLANGE MATERIAL	BLACK OXIDE COATED STEEL

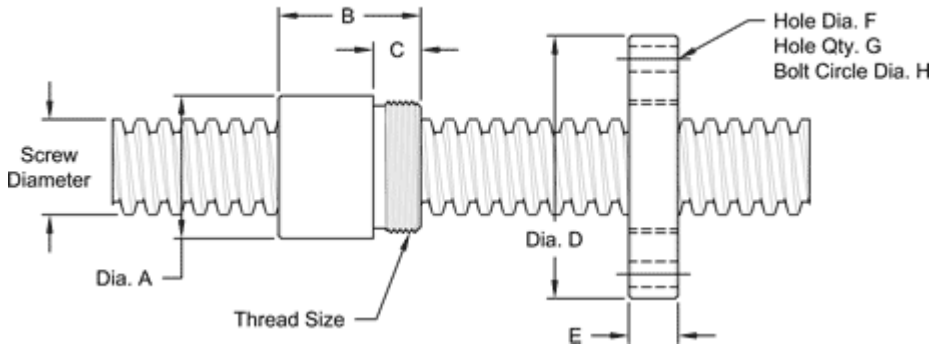


## 1"-2 DOUBLE LEAD ACME

This 1" – 2 double lead acme machine screw is available in both alloy steel and stainless steel with a corresponding aluminum bronze nut. Choose from right-hand or left-hand threads.

MACHINE SCREW SPECIFICATIONS	RH	LH
ALLOY STEEL SCREW PART NO.	AS 100 R 050 A	AS 100 L 050 A
STAINLESS STEEL SCREW PART NO.	AS 100 R 050 S	AS 100 L 050 S
THHREAD FORM	ACME	
SCREW DIAMETER - TURNS / INCH	1"-2	
PITCH / LEAD	0.250 IN. / 0.500 IN.	
ROOT DIAMETER	0.699 IN.	
SCREW WEIGHT (LB / FT)	2.2	
TORQUE TO RAISE 1 POUND	0.140 IN. - LB.	
MAXIMUM SCREW LENGTH	12 FEET	

## Nut and Flange Specifications



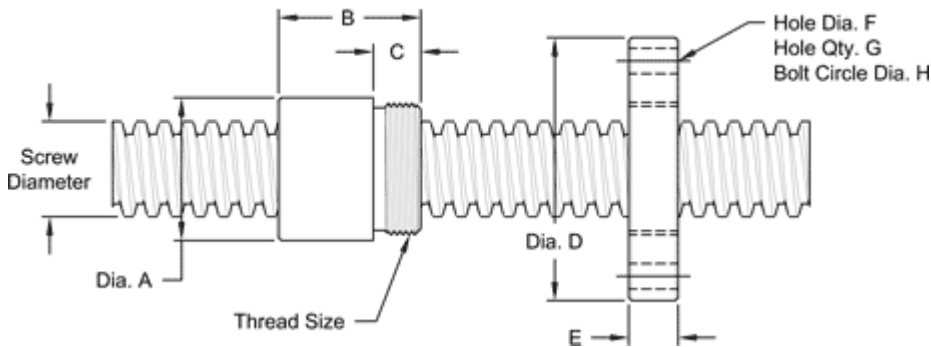
NUT SPECIFICATIONS	RH	LH
NUT PART NUMBER	AN 100 R 050 B	AN 100 L 050 B
NUT WITH FLANGE	AF 100 R 050	AF 100 L 050
DYNAMIC LOAD CAPACITY (LBS)	5,000	
STATIC LOAD CAPACITY (LBS)	16,000	
EFFICIENCY	58.20%	
MATERIAL	BRONZE	
NOMINAL DIAMETER "A"	1.50 IN.	
NUT LENGTH "B"	1.50 IN.	
THREAD LENGTH "C"	0.50 IN.	
THREAD SIZE	1.375-16 UN	
FLANGE PART NO.	FL-1375	
FLANGE DIAMETER "D"	2.75 IN.	
FLANGE THICKNESS "E"	0.52 IN.	
FLANGE HOLE DIAMETER "F"	0.266 IN.	
NUMBER OF HOLES IN FLANGE "G"	4	
FLANGE BOLT CIRCLE "H"	2.260 IN.	
FLANGE MATERIAL	BLACK OXIDE COATED STEEL	

## 1" -4 SINGLE LEAD ACME

This 1" - 4 single lead acme machine screw is available in both alloy steel and stainless steel with a corresponding aluminum bronze nut. Choose from right-hand or left-hand threads.

MACHINE SCREW SPECIFICATIONS	RH	LH
ALLOY STEEL SCREW NO.	AS 100 R 025 A	AS 100 L 025 A
STAINLESS STEEL SCREW NO.	AS 100 R 025 S	A S100 L 025 S
THREAD FORM	ACME	
SCREW DIAMETER - TURNS / INCH	1-4	
PITCH / LEAD	0.250 IN.	
ROOT DIAMETER	0.699 IN.	
SCREW WEIGHT (LB / FT)	2.2	
TORQUE TO RAISE 1 POUND	0.097 IN.-LB.	
MAXIMUM SCREW LENGTH	12 FEET	

## Nut and Flange Specifications



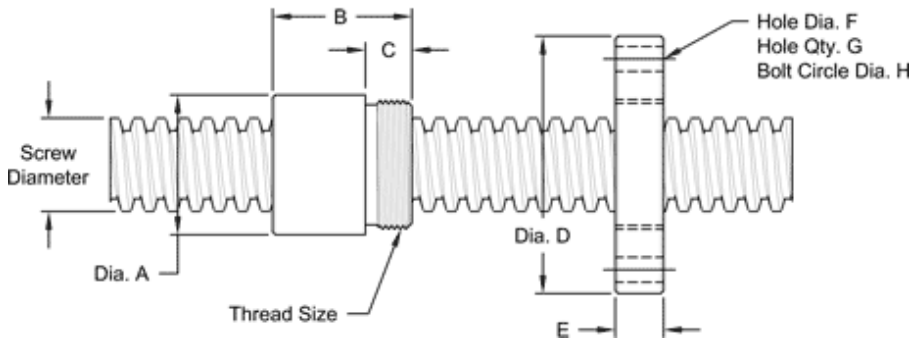
NUT SPECIFICATIONS	RH	LH
NUT PART NO.	AN 100 R 025 B	AN 100 L 025 B
NUT WITH FLANGE PART NO.	AF 100 R 025	AF 100 L 025
DYNAMIC LOAD CAPACITY (LBS.)	5,000	
STATIC LOAD CAPACITY (LBS.)	16,000	
EFFICIENCY	41.9%	
MATERIAL	BRONZE	
NOMINAL DIAMETER "A"	1.50 IN.	
NUT LENGTH "B"	1.50 IN.	
THREAD LENGTH "C"	0.50 IN.	
THREAD SIZE	1.375-16 UN	
FLANGE PART NUMBER	FL-1375	
FLANGE DIAMETER "D"	2.75 IN.	
FLANGE THICKNESS "E"	0.52 IN.	
FLANGE HOLE DIAMETER "F"	0.266 IN.	
NUMBER OF HOLES IN FLANGE "G"	4	
FLANGE BOLT CIRCLE "H"	2.260 IN.	
FLANGE MATERIAL	BLACK OXIDE COATED STEEL	

## 1" - 10 SINGLE LEAD ACME

This 1" - 10 single lead acme machine screw is available in both alloy steel and stainless steel with a corresponding aluminum bronze nut. Choose from right-hand or left-hand threads.

MACHINE SCREW SPECIFICATIONS	RH	LH
ALLOY STEEL SCREW PART NO.	AS 100 R 010 A	AS 100 L 010 A
STAINLESS STEEL SCREW PART NO.	AS 100 R 010 S	AS 100 L 010 S
THREAD FORM	ACME	
SCREW DIAMETER - TURNS / INCH	1-10	
PITCH / LEAD	0.100 IN.	
ROOT DIAMETER	0.857 IN.	
SCREW WEIGHT (LB / FT)	2.1	
TORQUE TO RAISE 1 POUND	0.078 IN.-LB.	
MAXIMUM SCREW LENGTH	12 FEET	

## Nut and Flange Specifications



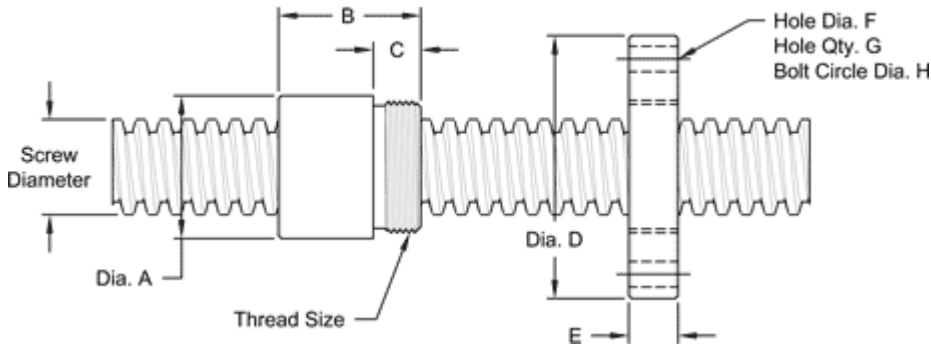
NUT SPECIFICATIONS	RH	LH
NUT PART NO.	AN 100 R 010 B	AN 100 L 010 B
NUUT WITH FLANGE PART NO.	AF100 R 010	AF 100 L 010
DYNAMIC LOAD CAPACITY (LBS.)	5,000	
STATIC LOAD CAPACITY (LBS)	16,000	
EFFICIENCY	21.2%	
MATERIAL	BRONZE	
NOMINAL DIAMETER "A"	1.50 IN.	
NUT LENGTH "B"	1.50 IN.	
THREAD LENGTH "C"	0.50 IN.	
THREAD SIZE	1.375-16 UN	
FLANGE PART NO.	FL-1375	
FLANGE DIAMETER "D"	2.75 IN.	
FLANGE THICKNESS "E"	0.52 IN.	
FLANGE HOLE DIAMETER "F"	0.266 IN.	
NUMBER OF HOLES IN FLANGE "G"	4	
FLANGE BOLT CIRCLE "H"	2.260 IN.	
FLANGE MATERIAL	BLACK OXIDE COATED STEEL	

## 1 1/4" - 4 SINGLE LEAD ACME

This 1 1/4" – 4 single lead acme machine screw is available in alloy steel and stainless steel with a corresponding aluminum bronze nut. Choose from right-hand or left-hand screw threads.

MACHINE SCREW SPECIFICATIONS	RH	LH
ALLOY STEEL SCREW PART NO.	AS 125 R 025 A	AS 125 L 025 A
STAINLESS STEEL SCREW PART NO.	AS 125 R 025 S	AS 125 L 025 S
THREAD FORM	ACME	
SCREW DIAMETER (TURNS / INCH)	1 1/4" - 4	
PITCH / LEAD	0.250 IN.	
ROOT DIAMETER	0.947 IN.	
SCREW WEIGHT (LB / FT)	3.3	
TORQUE TO RAISE 1 POUND	0.113 IN.-LB.	
MAXIMUM SCREW LENGTH	12 FEET	

## Nut and Flange Specifications



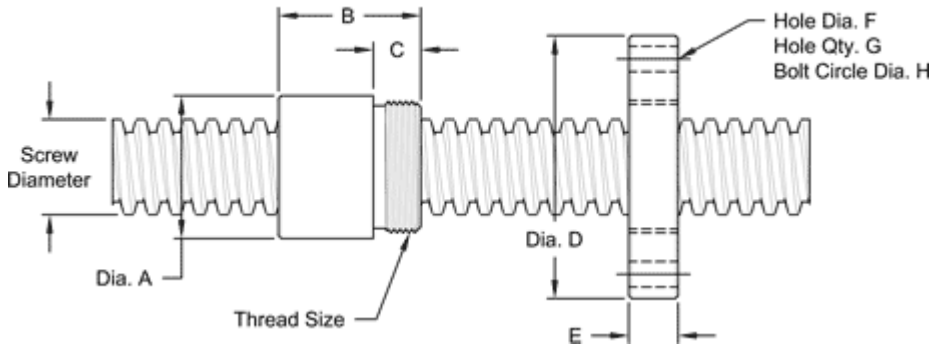
NUT SPECIFICATIONS	RH	LH
NUT PART NO.	AN 125 R 025 B	AN 125 L 025 B
NUT WITH FLANGE PART NO.	AF 125 R 025	AF 125 L 025
DYNAMIC LOAD CAPACITY (LBS.)	7,812	
STATIC LOAD CAPACITY (LBS)	25,000	
EFFICIENCY	36.000%	
MATERIAL	BRONZE	
NOMINAL DIAMETER "A"	2.12 IN.	
NUT LENGTH "B"	1.75 IN.	
THREAD LENGTH "C"	0.812 IN.	
THREAD SIZE	1.967-18 UN	
FLANGE PART NO.	FL-1967	
FLANGE DIAMETER "D"	4.20 IN.	
FLANGE THICKNESS "E"	0.832 IN.	
FLANGE HOLE DIAMETER "F"	0.397 IN.	
NUMBER OF HOLES IN FLANGE "G"	4	
FLANGE BOLT CIRCLE "H"	3.440 IN.	
FLANGE MATERIAL	BLACK OXIDE COATED STEEL	

## 1 1/2"-2 DOUBLE LEAD ACME

This 1 1/2"-2 double lead acme machine screw is available in both alloy steel and stainless steel with a corresponding aluminum bronze nut. Choose from right-hand or left-hand threads.

MACHINE SCREW SPECIFICATIONS	RH	LH
ALLOY STEEL SCREW PART NO.	AS 150 R 050 A	AS 150 L 050 A
STAINLESS STEEL SCREW PART NO.	AS 150 R 050 S	AS 150 L 050 S
THREAD FORM	ACME	
SCREW DIAMETER - TURNS / INCH	1 1/2" - 2	
PITCH / LEAD	0.250 IN./0.500 IN.	
ROOT DIAMETER	1.196 IN.	
SCREW WEIGHT (LB / FT)	4.9	
TORQUE TO RAISE 1 POUND	0.171 IN.-LB.	
MAXIMUM SCREW LENGTH	24 FEET	

## Nut and Flange Specifications



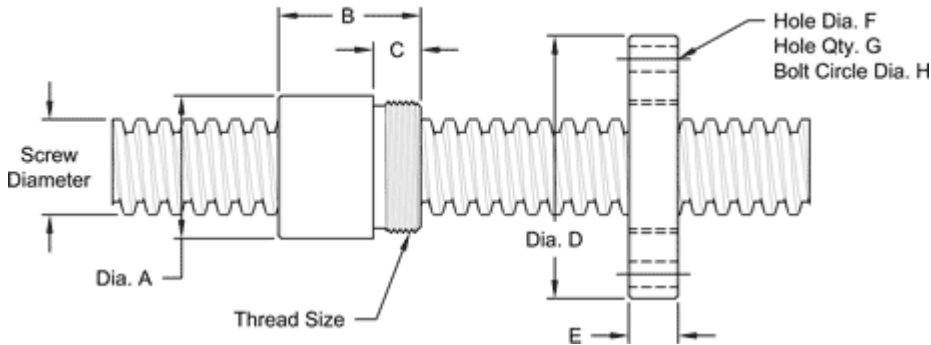
NUT SPECIFICATIONS	RH	LH
NUT PART NO.	AN 150 R 050 B	AN 150 L 050 B
NUT WITH FLANGE PART NO.	AF 150 R 050	AF 150 L 050
DYNAMIC LOAD CAPACITY (LBS.)	11,250	
STATIC LOAD CAPACITY (LBS.)	36,000	
EFFICIENCY	47.6%	
MATERIAL	BRONZE	
NOMINAL DIAMETER "A"	2.12 IN.	
NUT LENGTH "B"	2.30 IN.	
THREAD LENGTH "C"	0.812 IN.	
THREAD SIZE	1.967-18 UN	
FLANGE PART NO.	FL-1967	
FLANGE DIAMETER "D"	4.20 IN.	
FLANGE THICKNESS "E"	0.832 IN.	
FLANGE HOLE DIAMETER "F"	0.397 IN.	
NUMBER OF HOLES IN FLANGE "G"	4	
FLANGE BOLT CIRCLE "H"	3.440 IN.	
FLANGE MATERIAL	BLACK OXIDE COATED STEEL	

## 1 1/2" -4 SINGLE LEAD ACME

This 1 1/2" – 4 single lead acme machine screw is available in alloy steel and stainless steel with a corresponding aluminum bronze nut. Choose from right-hand or left-hand screw threads.

MACHINE SCREW SPECIFICATIONS	RH	LH
ALLOY STEEL SCREW PART NO.	AS 150 R 025 A	AS 150 L 025 A
STAINLESS STEEL SCREW PART NO.	AS 150 R 025 S	AS 150 L 025 S
THREAD FORM		ACME
SCREW DIAMETER (TURNS / INCH)		1 1/2" - 4
PITCH / LEAD		0.250 IN.
ROOT DIAMETER		1.196 IN.
SCREW WEIGHT (LB / FT)		5.0
TORQUE TO RAISE 1 POUND		0.130 IN.-LB.
MAXIMUM SCREW LENGTH		24 FEET

## Nut and Flange Specifications

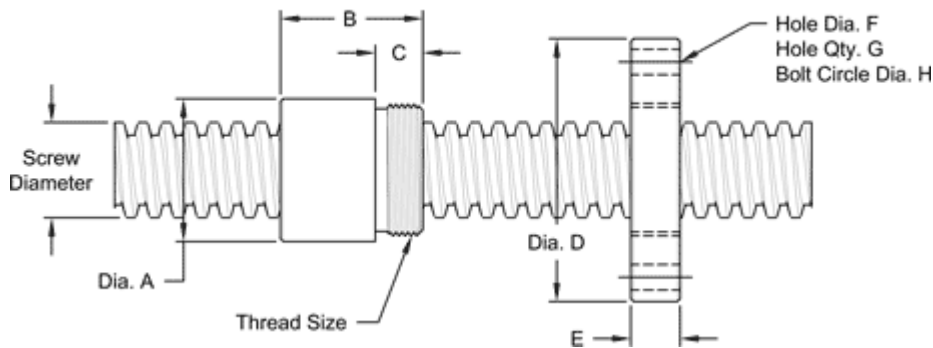


NUT SPECIFICATIONS	RH	LH
NUT PART NO.	AN 150 R 025 B	AN 150 L 025 B
NUT WITH FLANGE PART NO.	AF 150 R 025	AF 150 L 025
DYNAMIC LOAD CAPACITY (LBS.)		11,250
STATIC LOAD CAPACITY (LBS.)		36,000
EFFICIENCY		31.6%
MATERIAL		BRONZE
NOMINAL DIAMETER "A"		2.12 IN.
NUT LENGTH "B"		2.30 IN.
THREAD LENGTH "C"		0.812 IN.
THREAD SIZE		1.967-16 UN
FLANGE PART NO.	FL1967	
FLANGE DIAMETER "D"		4.20 IN.
FLANGE THICKNESS "E"		0.832 IN.
FLANGE HOLE DIAMETER "F"		0.397 IN.
NUMBER OF HOLES IN FLANGE "G"		4
FLANGE BOLT CIRCLE "H"		3.440 IN.
FLANGE MATERIAL		BLACK OXIDE COATED STEEL

## 1 1/2" - 2 2/3 SINGLE LEAD ACME

This 1 1/2"-2 2/3 single lead ACME machine screw is available in both alloy steel and stainless steel with a corresponding aluminum bronze nut. Choose from right-hand or left-hand threads.

MACHINE SCREW SPECIFICATIONS	RH	LH
ALLOY STEEL SCREW PART NO.	AS 150 R 038 A	AS 150 L 038 A
STAINLESS STEEL SCREW PART NO.	AS 150 R 038 S	AS 150 L 038 S
THREAD FORM	ACME	
SCREW DIAMETER - TURNS / INCH	1 1/2" - 2 2/3	
PITCH / LEAD	0.375 IN.	
ROOT DIAMETER	1.066 IN.	
SCREW WEIGHT (LB / FT)	4.6	
TORQUE TO RAISE 1 POUND	0.146 IN.-LB.	
MAXIMUM SCREW LENGTH	24 FEET	



NUT SPECIFICATIONS	RH	LH
NUT PART NO.	AN 150 R 038 B	AN 150 L 038 B
NUT WITH FLANGE PART NO.	AF 150 R 038	AF 150 L 038
DYNAMIC LOAD CAPACITY (LBS.)	11,250	
STATIC LOAD CAPACITY (LBS.)	36,000	
EFFICIENCY	41.8%	
MATERIAL	BRONZE	
NOMINAL DIAMETER "A"	2.12 IN.	
NUT LENGTH "B"	2.30 IN.	
THREAD LENGTH "C"	0.812 IN.	
THREAD SIZE	1.967-18 UN	
FLANGE PART NO.	FL-1967	
FLANGE DIAMETER "D"	4.20 IN.	
FLANGE THICKNESS "E"	0.832 IN.	
FLANGE HOLE DIAMETER "F"	0.397 IN.	
NUMBER OF HOLES IN FLANGE "G"	4	
FLANGE BOLT CIRCLE "H"	3.440 IN.	
FLANGE MATERIAL	BLACK OXIDE COATED STEEL	

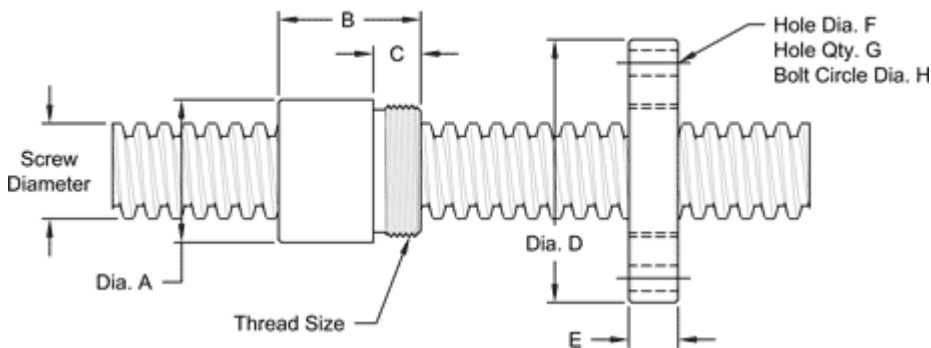
## 1 1/2" - 2 2/3 SINGLE LEAD STUB ACME

This 1 1/2"-2 2/3 single lead STUB acme machine screw is available in both alloy steel and stainless steel with a corresponding aluminum bronze nut. Choose from right-hand or left-hand threads.

MACHINE SCREW SPECIFICATIONS	RH	LH
ALLOY STEEL SCREW PART NO.	SS 150 R 038 A	SS 150 L 038 A
STAINLESS STEEL SCREW PART NO.	SS 150 R 038 S	SS 150 L 038 S
THREAD FORM	STUB ACME	
SCREW DIAMETER - TURNS / INCH	1 1/2" - 2 2/3	
PITCH / LEAD	0.375 IN.	
ROOT DIAMETER	1.216 IN.	
SCREW WEIGHT (LB / FT)	4.6	
TORQUE TO RAISE 1 POUND	0.173 IN.-LB.	
MAXIMUM SCREW LENGTH	24 FEET*	

\* 12 feet for stainless steel stock

## Nut and Flange Specifications



NUT SPECIFICATIONS	RH	LH
NUT PART NO.	SN 150 R 038 B	SN 150 L 038 B
NUT WITH FLANGE PART NO.	SF 150 R 038	SF 150 L 038
DYNAMIC LOAD CAPACITY (LBS.)	11,250	
STATIC LOAD CAPACITY (LBS.)	36,000	
EFFICIENCY	40.5%	
MATERIAL	BRONZE	
NOMINAL HOLE DIAMETER "A"	2.12 IN.	
NUT LENGTH "B"	2.30 IN.	
THREAD LENGTH "C"	0.812 IN.	
THREAD SIZE	1.967-18 UN	
FLANGE PART NO.	FL-1967	
FLANGE DIAMETER "D"	4.20 IN.	
FLANGE THICKNESS "E"	0.832 IN.	
FLANGE HOLE DIAMETER "F"	0.397 IN.	
NUMBER OF HOLES IN FLANGE "G"	4	
FLANGE BOLT CIRCLE "H"	3.440 IN.	
FLANGE MATERIAL	BLACK OXIDE COATED STEEL	



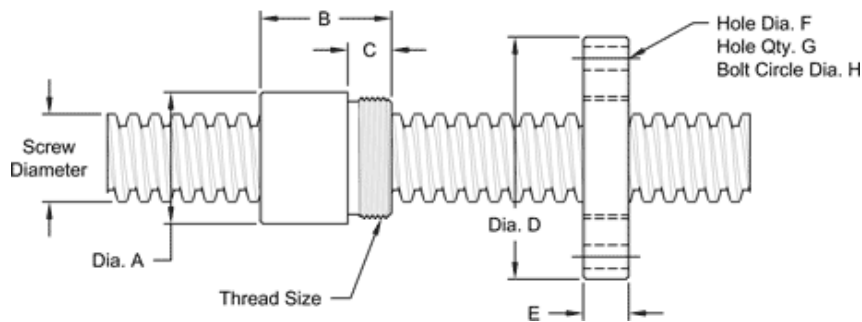
## 2"-2 SINGLE LEAD ACME

This 2"-2 single lead acme machine screw is available in both alloy steel and stainless steel with a corresponding aluminum bronze nut. These are available with right-hand or left-hand threads.

MACHINE SCREW SPECIFICATIONS	RH	LH
ALLOY STEEL SCREW PART NO.	AS 200 R 050 A	AS 200 L 050 A
STAINLESS STEEL SCREW PART NO.	AS 200 R 050 S	AS 200 L 050 S
THREAD FORM	ACME	
SCREW DIAMETER - TURNS/INCH	2" - 2	
PITCH/LEAD	0.500 IN.	
ROOT DIAMETER	1.435 IN.	
SCREW WEIGHT (LB / FT)	8.1	
TORQUE TO RAISE 1 POUND	0.195 IN.-LB.	
MAXIMUM SCREW LENGTH	20 FEET*	

\* 12 feet for stainless steel stock

### Nut and Flange Specifications



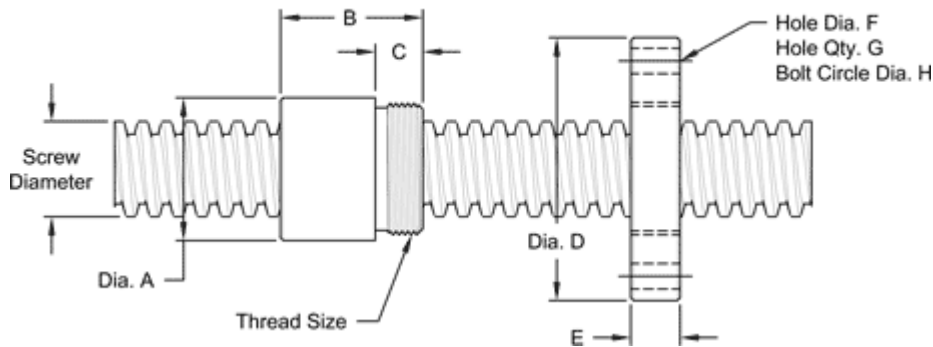
NUT SPECIFICATIONS	RH	LH
NUT PART NUMBER	AN 200 R 050 B	AN 200 R 050 B
NUT WITH FLANGE	AF 20 0R 050	AF 200 R 050
DYNAMIC LOAD CAPACITY (LBS)	20,000	
STATIC LOAD CAPACITY (LBS)	64,000	
EFFICIENCY	41.9%	
MATERIAL	BRONZE	
NOMINAL DIAMETER "A"	2.75 IN.	
NUT LENGTH "B"	2.75 IN.	
THREAD LENGTH "C"	0.880 IN.	
THREAD SIZE	2.548-18 UN	
FLANGE PART NUMBER	FL-2548	
FLANGE DIAMETER "D"	4.94 IN	
FLANGE THICKNESS "E"	0.895 IN.	
FLANGE HOLE DIAMETER "F"	0.531 IN.	
NUMBER OF HOLES IN FLANGE "G"	4	
FLANGE BOLT CIRCLE "H"	4.062 IN.	
FLANGE MATERIAL	BLACK OXIDE COATED STEEL	

## 2"-4 SINGLE LEAD ACME

This 2"-4 single lead acme machine screw is available in both alloy steel and stainless steel with a corresponding aluminum bronze nut. Choose from right-hand or left-hand threads.

MACHINE SCREW SPECIFICATIONS	RH	LH
ALLOY STEEL SCREW PART NO.	AS 200 R 025 A	AS 200 L 025 A
STAINLESS STEEL SCREW PART NO.	AS 200 R 025 S	AS 200 L 025 S
THREAD FORM	ACME	
SCREW DIAMETER - TURNS / INCH	2" - 4	
PITCH / LEAD	0.250 IN.	
ROOT DIAMETER	1.695 IN.	
SCREW WEIGHT (LB / FT)	9.3	
TORQUE TO RAISE 1 POUND	0.162 IN.- LB.	
MAXIMUM SCREW LENGTH	12 FEET	

## Nut and Flange Specifications



NUT SPECIFICATIONS	RH	LH
NUT PART NO.	AN 200 R 025 B	AN 200 L 025 B
NUT WITH FLANGE PART NO.	AF 200 R 025	AF 200 L 025
DYNAMIC LOAD CAPACITY (LBS.)	20,000	
STATIC LOAD CAPACITY (LBS.)	64,000	
EFFICIENCY	25.4%	
MATERIAL	BRONZE	
NOMINAL DIAMETER "A"	2.75 IN.	
NUT LENGTH "B"	2.75 IN.	
THREAD LENGTH "C"	0.880 IN.	
THREAD SIZE	2.548-18 UN	
FLANGE PART NO.	FL-2548	
FLANGE DIAMETER "D"	4.94 IN.	
FLANGE THICKNESS "E"	0.895 IN.	
FLANGE HOLE DIAMETER "F":	0.531 IN	
NUMBER OF HOLES IN FLANGE "G"	4	
FLANGE BOLT CIRCLE "H"	4.062 IN.	
FLANGE MATERIAL	BLACK OXIDE COATED STEEL	

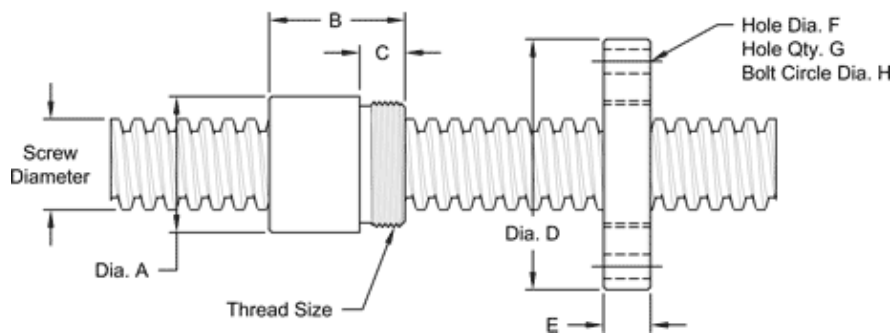
## 2 1/4"-2 SINGLE LEAD ACME

This 2 1/4"-2 single lead acme machine screw is available in both alloy steel and stainless steel with a corresponding aluminum bronze nut. Choose from right-hand or left-hand threads.

MACHINE SCREW SPECIFICATIONS	RH	LH
ALLOY STEEL SCREW PART NO.	AS 225 R 050 A	AS 225 L 050 A
STAINLESS STEEL SCREW PART NO.	AS 225 R 050 S	AS 225 L 050 S
THREAD FORM		ACME
SCREW DIAMETER - TPI		2 1/4" - 2
PITCH/LEAD		0.500 IN.
ROOT DIAMETER		1.685 IN.
SCREW WEIGHT (LB / FT)		10.6
TORQUE TO RAISE 1 POUND		.211 IN.-LB.
MAXIMUM SCREW LENGTH		20 FEET *

\* 12 feet for stainless steel stock

## Nut and Flange Specifications



NUT SPECIFICATIONS	RH	LH
NUT PART NUMBER	AN 225 R 050 B	AN 225 L 050 B
NUT WITH FLANGE	AF 225 R 050	AF 225 L 050
DYNAMIC LOAD CAPACITY (LBS)		30,000
STATIC LOAD CAPACITY (LBS)		81,000
EFFICIENCY		38.7%
MATERIAL		BRONZE
NOMINAL DIAMETER "A"		3.38 IN.
NUT LENGTH "B"		3.06 IN.
THREAD LENGTH "C"		1.560 IN.
THREAD SIZE		3.137-12 UN
FLANGE PART NUMBER	FL-3137	
FLANGE DIAMETER "D"		5.38 IN.
FLANGE THICKNESS "E"		1.580 IN.
FLANGE HOLE DIAMETER "F"		0.656 IN.
NUMBER OF HOLES IN FLANGE "G"		6
FLANGE BOLT CIRCLE "H"		4.375 IN.
FLANGE MATERIAL		BLACK OXIDE COATED STEEL

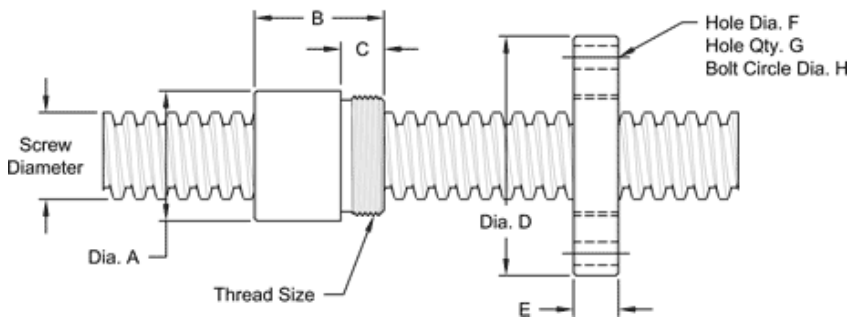
## 2 1/4"-4 SINGLE LEAD ACME

This 2 1/4"-4 single lead acme machine screw is available in both alloy steel and stainless steel with a corresponding aluminum bronze nut. These are available with right-hand or left-hand threads.

MACHINE SCREW SPECIFICATIONS	RH	LH
ALLOY STEEL SCREW PART NO.	AS 225 R 025 A	AS 225 L 025 A
STAINLESS STEEL SCREW PART NO.	AS 225 R 025 S	AS 225 L 025 S
THREAD FORM	ACME	
SCREW DIAMETER - TURNS/INCH	2 1/4" - 4	
PITCH/LEAD	0.250 IN.	
ROOT DIAMETER	1.944 IN.	
SCREW WEIGHT (LB / FT)	11.2	
TORQUE TO RAISE 1 POUND	0.178 IN.-LB.	
MAXIMUM SCREW LENGTH	20 FEET*	

\* 12 feet for stainless steel stock

## Nut and Flange Specifications



NUT SPECIFICATIONS	RH	LH
NUT PART NO.	AN 225 R 025 B	AN 225 L 025 B
NUT WITH FLANGE PART NO.	AF 225 R 025	AF 225 L 025
DYNAMIC LOAD CAPACITY (LBS)	30,000	
STATIC LOAD CAPACITY (LBS)	81,000	
EFFICIENCY	23.1%	
MATERIAL	BRONZE	
NOMINAL DIAMETER "A"	3.38 IN.	
NUT LENGTH "B"	3.06 IN.	
THREAD LENGTH "C"	1.560 IN.	
THREAD SIZE	3.137-12 UN	
FLANGE PART NUMBER	FL-3137	
FLANGE DIAMETER "D"	5.38 IN	
FLANGE THICKNESS "E"	1.580 IN.	
FLANGE HOLE DIAMETER "F"	0.656 IN.	
NUMBER OF HOLES IN FLANGE "G"	6	
FLANGE BOLT CIRCLE "H"	4.375 IN.	
FLANGE MATERIAL	BLACK OXIDE COATED STEEL	

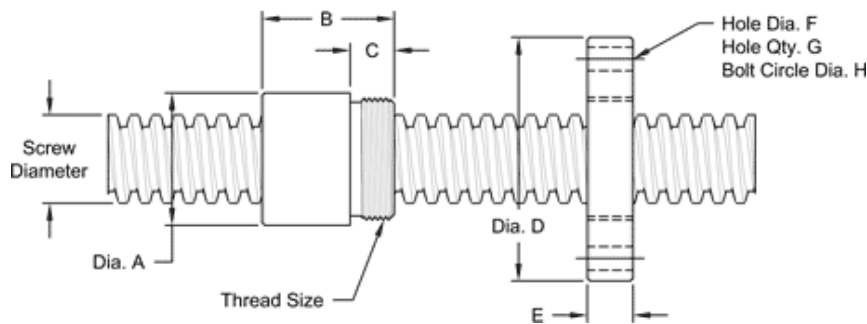
## 2 1/2"-2 SINGLE LEAD ACME

This 2 1/2"-2 single lead acme machine screw is available in both alloy steel and stainless steel with a corresponding aluminum bronze nut. Choose from right-hand or left-hand threads.

MACHINE SCREW SPECIFICATIONS	RH	LH
ALLOY STEEL SCREW PART NO.	AS 250 R 050 A	AS 250 L 050 A
STAINLESS STEEL SCREW PART NO.	AS 250 R 050 S	AS 250 L 050 S
THREAD FORM	ACME	
SCREW DIAMETER - TURNS/INCH	2 1/2" - 2	
PITCH/LEAD	0.500 IN.	
ROOT DIAMETER	1.934 IN.	
SCREW WEIGHT (LB / FT)	13.4	
TORQUE TO RAISE 1 POUND	0.227IN.-LB.	
MAXIMUM SCREW LENGTH	20 FEET*	

\*12 feet stainless steel

## Nut and Flange Specifications



NUT SPECIFICATIONS	RH	LH
NUT PART NUMBER	AN 250 R 050 B	AN 250 L 050 B
NUT WITH FLANGE	AF 250 R 050	AF 250 L 050
DYNAMIC LOAD CAPACITY (LBS)	40,000	
STATIC LOAD CAPACITY (LBS)	100,000	
EFFICIENCY	36.0%	
MATERIAL	BRONZE	
NOMINAL DIAMETER "A"	3.38 IN.	
NUT LENGTH "B"	3.38 IN.	
THREAD LENGTH "C"	1.560 IN.	
THREAD SIZE	3.137-12 UN	
FLANGE PART NUMBER	FL-3137	
FLANGE DIAMETER "D"	5.38 IN	
FLANGE THICKNESS "E"	1.580 IN.	
FLANGE HOLE DIAMETER "F"	0.656 IN.	
NUMBER OF HOLES IN FLANGE "G"	6	
FLANGE BOLT CIRCLE "H"	4.375 IN.	
FLANGE MATERIAL	BLACK OXIDE COATED STEEL	

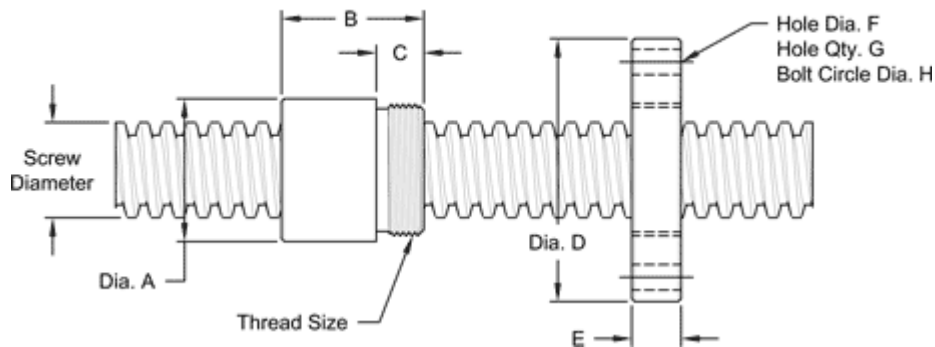
## 2 1/2" -4 SINGLE LEAD ACME

This 2 1/2"-4 single lead acme machine screw is available in both alloy steel and stainless steel with a corresponding aluminum bronze nut. This is available with right-hand or left-hand threads.

MACHINE SCREW SPECIFICATIONS	RH	LH
ALLOY STEEL SCREW PART NO.	AS 250 R 025 A	AS 250 L 025 A
STAINLESS STEEL SCREW PART NO.	AS 250 R 025 S	AS 250 L 025 S
THREAD FORM	ACME	
SCREW DIAMETER - TURNS/INCH	2 1/2" - 4	
PITCH/LEAD	0.250 IN.	
ROOT DIAMETER	2.193 IN.	
SCREW WEIGHT (LB / FT)	13.4	
TORQUE TO RAISE 1 POUND	0.294 IN.-LB.	
MAXIMUM SCREW LENGTH	20 FEET*	

\*12 Feet for stainless steel stock

## Nut and Flange Specifications



NUT SPECIFICATIONS	RH	LH
NUT PART NUMBER	AN 250 R 025 B	AN 250 L 025 B
NUT WITH FLANGE	AF 250 R 025	AF 250 L 025
DYNAMIC LOAD CAPACITY (LBS)	40,000	
STATIC LOAD CAPACITY (LBS)	100,000	
EFFICIENCY	21.2%	
MATERIAL	BRONZE	
NOMINAL DIAMETER "A"	3.38 IN.	
NUT LENGTH "B"	3.38 IN.	
THREAD LENGTH "C"	1.560 IN.	
THREAD SIZE	3.137-12 UN	
FLANGE PART NUMBER	FL-3137	
FLANGE DIAMETER "D"	5.38 IN.	
FLANGE THICKNESS "E"	1.580 IN.	
FLANGE HOLE DIAMETER "F"	0.656 IN.	
NUMBER OF HOLES IN FLANGE "G"	6	
FLANGE BOLT CIRCLE "H"	4.375 IN.	
FLANGE MATERIAL	BLACK OXIDE COATED STEEL	

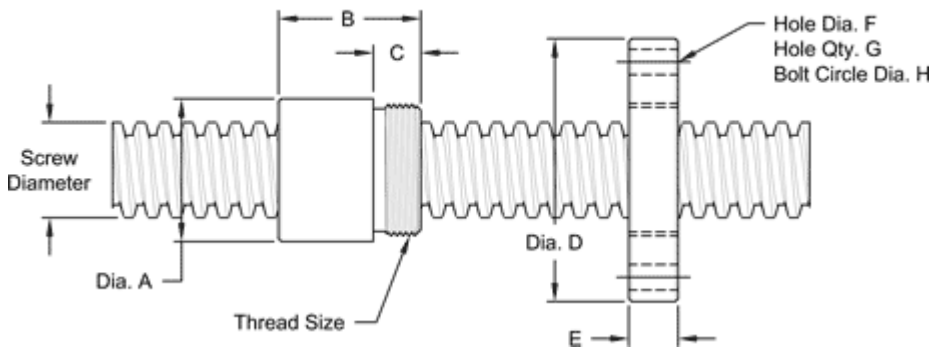
## 3 3/8" -1 1/2 SINGLE LEAD STUB ACME

This 3 3/8"-1 1/2 single lead stub acme machine screw is available in both alloy steel and stainless steel with a corresponding aluminum bronze nut. Choose from right-hand or left-hand threads.

MACHINE SCREW SPECIFICATIONS	RH	LH
ALLOY STEEL SCREW PART NO.	SS 338 R 067 A	SS 338 L 067 A
STAINLESS STEEL SCREW PART NO.	SS 338 R 067 S	SS 338 L 067 S
THREAD FORM	STUB ACME	
SCREW DIAMETER - TURNS/INCH	3 3/8" -1 1/2	
PITCH/LEAD	0.667 IN.	
ROOT DIAMETER	2.902 IN.	
SCREW WEIGHT (LB / FT)	20.1	
TORQUE TO RAISE 1 POUND	0.314 IN.-LB.	
MAXIMUM SCREW LENGTH	20 FEET*	

\*12 feet for stainless steel stock

## Nut and Flange Specifications



NUT SPECIFICATIONS	RH	LH
NUT PART NUMBER	AN 338 R 067 B	AN 338 L 067 B
NUT WITH FLANGE	AF 338 R 067	AF 338 L 067
DYNAMIC LOAD CAPACITY (LBS)	40,000	
STATIC LOAD CAPACITY (LBS)	100,000	
EFFICIENCY	34.7%	
MATERIAL	BRONZE	
NOMINAL DIAMETER "A"	4.50 IN.	
NUT LENGTH "B"	4.50 IN.	
THREAD LENGTH "C"	2.00 IN.	
THREAD SIZE	4.325-12 UN	
FLANGE PART NUMBER	FL-4325	
FLANGE DIAMETER "D"	7.38 IN	
FLANGE THICKNESS "E"	2.020 IN.	
FLANGE HOLE DIAMETER "F"	0.781 IN.	
NUMBER OF HOLES IN FLANGE "G"	6	
FLANGE BOLT CIRCLE "H"	6.250 IN.	
FLANGE MATERIAL	BLACK OXIDE COATED STEEL	

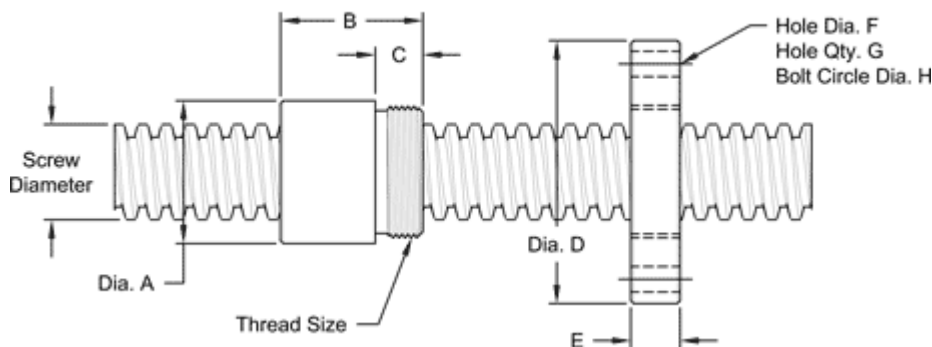
## 3 1/2" - 1 1/2 SINGLE LEAD ACME

This 3 1/2"-1 1/2 single lead stub acme machine screw is available in both alloy steel and stainless steel with a corresponding aluminum bronze nut. This is available with right-hand or left-hand threads.

MACHINE SCREW SPECIFICATIONS	RH	LH
ALLOY STEEL SCREW PART NO.	AS 350 R 067 A	AS 350 L 067 A
STAINLESS STEEL SCREW PART NO.	AS 350 R 067 S	AS 350 L 067 S
THREAD FORM	ACME	
SCREW DIAMETER - TURNS/INCH	3 1/2" - 1 1/2	
PITCH/LEAD	0.667 IN.	
ROOT DIAMETER	2.760 IN.	
SCREW WEIGHT (LB / FT)	30	
TORQUE TO RAISE 1 POUND	0.313 IN.-LB.	
MAXIMUM SCREW LENGTH	20 FEET*	

\*12 feet for stainless steel stock

## Nut and Flange Specifications



NUT SPECIFICATIONS	RH	LH
NUT PART NO.	AN 350 R 067 B	AN 350 L 067 B
NUT WITH FLANGE PART NO.	AF 350 R 067	AF 350 L 067
DYNAMIC LOAD CAPACITY (LBS)	60,000	
STATIC LOAD CAPACITY (LBS)	200,000	
EFFICIENCY	34.8%	
MATERIAL	BRONZE	
NOMINAL DIAMETER "A"	4.50 IN.	
NUT LENGTH "B"	4.50 IN.	
THREAD LENGTH "C"	2.000 IN.	
THREAD SIZE	4.325-12 UN	
FLANGE PART NUMBER	FL-4325	
FLANGE DIAMETER "D"	7.38 IN	
FLANGE THICKNESS "E"	2.020 IN.	
FLANGE HOLE DIAMETER "F"	0.781 IN.	
NUMBER OF HOLES IN FLANGE "G"	6	
FLANGE BOLT CIRCLE "H"	6.250 IN.	
FLANGE MATERIAL	BLACK OXIDE COATED STEEL	



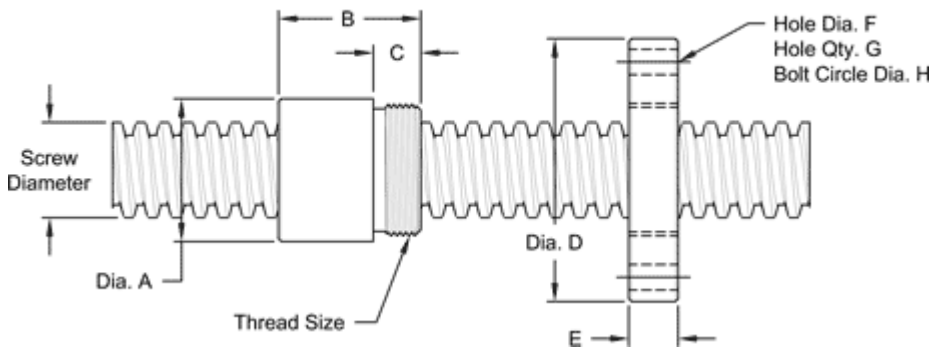
## 3 3/4" - 1 1/2 SINGLE LEAD ACME

This 3 3/4"-1 1/2 single lead acme machine screw is available in both alloy steel and stainless steel with a corresponding aluminum bronze nut. Choose right-hand or left-hand threads

MACHINE SCREW SPECIFICATIONS	RH	LH
ALLOY STEEL SCREW PART NO.	AS 375 R 067 A	AS 375 L 067 A
STAINLESS STEEL SCREW PART NO.	AS 375 R 067 S	AS 375 L 067 S
THREAD FORM	ACME	
SCREW DIAMETER - TURNS/INCH	3 3/4" - 1 1/2	
PITCH/LEAD	0.667 IN.	
ROOT DIAMETER	3.009 IN.	
SCREW WEIGHT (LB / FT)	38.3	
TORQUE TO RAISE 1 POUND	0.329 IN.-LB.	
MAXIMUM SCREW LENGTH	20 FEET	

\*12 feet for stainless steel stock

## Nut and Flange Specifications



NUT SPECIFICATIONS	RH	LH
NUT PART NO.	AN 350 R 067 B	AN 350 L 067 B
NUT WITH FLANGE PART NO.	AF 350 R 067	AF 350 L 067
DYNAMIC LOAD CAPACITY (LBS)	70,000	
STATIC LOAD CAPACITY (LBS)	260,000	
EFFICIENCY	33.1%	
MATERIAL	BRONZE	
NOMINAL DIAMETER "A"	5.00 IN.	
NUT LENGTH "B"	5.50 IN.	
THREAD LENGTH "C"	2.000 IN.	
THREAD SIZE	4.750-12 UN	
FLANGE PART NUMBER	FL-4750	
FLANGE DIAMETER "D"	9.00 IN	
FLANGE THICKNESS "E"	2.020 IN.	
FLANGE HOLE DIAMETER "F"	1.063 IN.	
NUMBER OF HOLES IN FLANGE "G"	4	
FLANGE BOLT CIRCLE "H"	7.000 IN.	
FLANGE MATERIAL	BLACK OXIDE COATED STEEL	

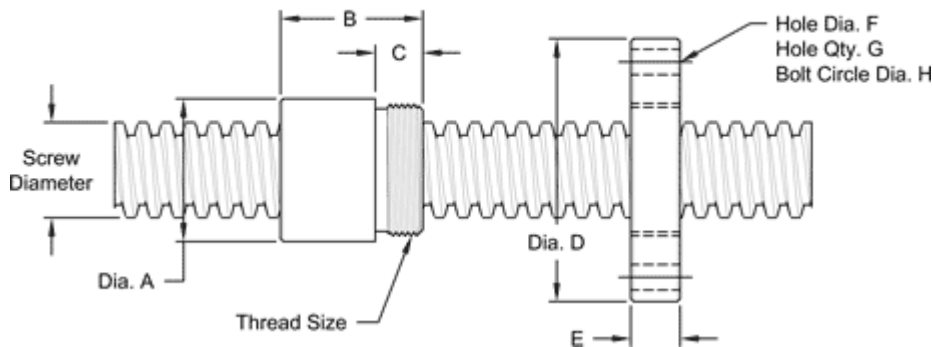
## 4 1/2" - 1 1/2 SINGLE LEAD ACME

This 4 1/2"-1 1/2 single lead acme machine screw is available in both alloy steel and stainless steel with a corresponding aluminum bronze nut. Choose right-hand or left-hand threads.

MACHINE SCREW SPECIFICATIONS	RH	LH
ALLOY STEEL SCREW PART NO.	AS 450 R 067 A	AS 450 L 067 A
STAINLESS STEEL SCREW PART NO.	AS 450 R 067 S	AS 450 L 067 S
THREAD FORM	ACME	
SCREW DIAMETER - TURNS/INCH	4 1/2" - 1 1/2	
PITCH/LEAD	0.067 IN.	
ROOT DIAMETER	3.757 IN.	
SCREW WEIGHT (LB / FT)	45.0	
TORQUE TO RAISE 1 POUND	0.378 IN.-LB.	
MAXIMUM SCREW LENGTH	20 FEET*	

\*12 feet for stainless steel stock

## Nut and Flange Specifications



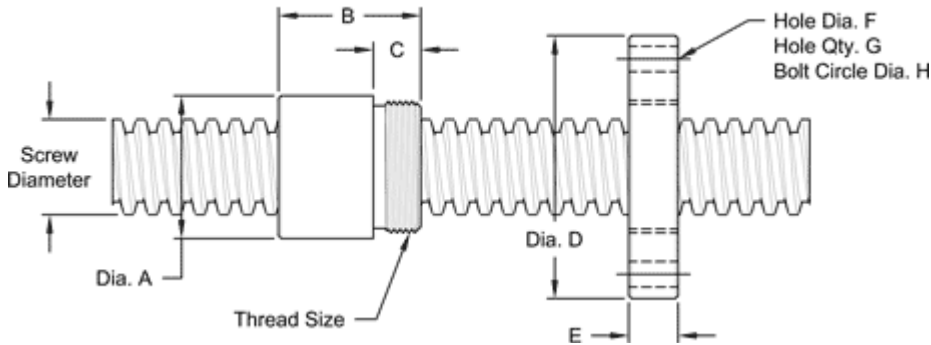
NUT SPECIFICATIONS	RH	LH
NUT PART NO.	AN 450 R 067 B	AN 450 L 067 B
NUT WITH FLANGE PART NO.	AF 450 R 067	AF 450 L 067
DYNAMIC LOAD CAPACITY (LBS)	100,000	
STATIC LOAD CAPACITY (LBS)	320,000	
EFFICIENCY	28.9%	
MATERIAL	BRONZE	
NOMINAL DIAMETER "A"	6.00 IN.	
NUT LENGTH "B"	6.00 IN.	
THREAD LENGTH "C"	2.000 IN.	
THREAD SIZE	5.497-12 UN	
FLANGE PART NUMBER	FL-5497	
FLANGE DIAMETER "D"	9.75 IN	
FLANGE THICKNESS "E"	2.020 IN.	
FLANGE HOLE DIAMETER "F"	1.031 IN.	
NUMBER OF HOLES IN FLANGE "G"	6	
FLANGE BOLT CIRCLE "H"	8.000 IN.	
FLANGE MATERIAL	BLACK OXIDE COATED STEEL	

## 5"-1½ SINGLE LEAD ACME

This 5"-1 1/2 single lead acme machine screw is available in both alloy steel and stainless steel with a corresponding aluminum bronze nut. This is available with right-hand or left-hand threads.

MACHINE SCREW SPECIFICATIONS	RH	LH
ALLOY STEEL SCREW PART NO.	AS 500 R 067 A	AS 500 L 067 A
STAINLESS STEEL SCREW PART NO.	AS 500 R 067 S	AS 500 L 067 S
THREAD FORM	ACME	
SCREW DIAMETER - TURNS/INCH	5" - 1 1/2	
PITCH/LEAD	0.667 IN.	
ROOT DIAMETER	4.256 IN.	
SCREW WEIGHT (LB / FT)	57.5	
TORQUE TO RAISE 1 POUND	0.418 IN.-LB.	
MAXIMUM SCREW LENGTH	20 FEET	

## Nut and Flange Specifications



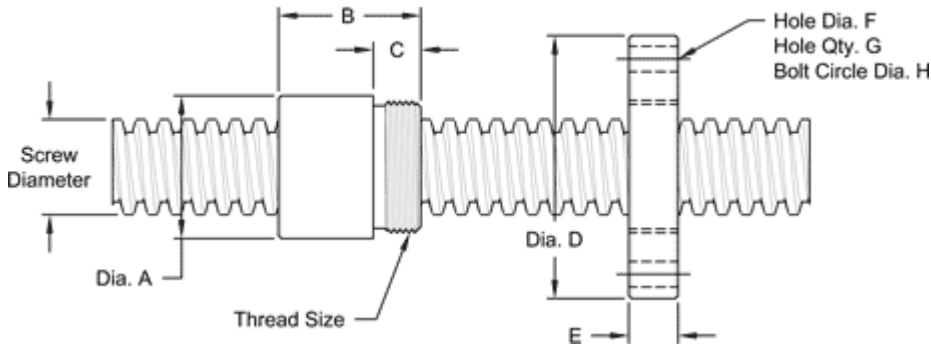
NUT SPECIFICATIONS	RH	LH
NUT PART NO.	AN 500 R 067 B	AN 500 L 067 B
NUT WITH FLANGE PART NO.	AF 500 R 067	AF 500 L 067
DYNAMIC LOAD CAPACITY (LBS)	150,000	
STATIC LOAD CAPACITY (LBS)	470,000	
EFFICIENCY	26.7%	
MATERIAL	BRONZE	
NOMINAL DIAMETER "A"	7.50 IN.	
NUT LENGTH "B"	7.50 IN.	
THREAD LENGTH "C"	2.00 IN.	
THREAD SIZE	7.066-8 UN	
FLANGE PART NUMBER	FL-7066	
FLANGE DIAMETER "D"	12.00 IN	
FLANGE THICKNESS "E"	2.020 IN.	
FLANGE HOLE DIAMETER "F"	1.125 IN.	
NUMBER OF HOLES IN FLANGE "G"	8	
FLANGE BOLT CIRCLE "H"	10.000 IN.	
FLANGE MATERIAL	BLACK OXIDE COATED STEEL	

## 6"-1 1/3 SINGLE LEAD ACME

This 6"-1 1/3 single lead acme machine screw is available in both alloy steel and stainless steel with a corresponding aluminum bronze nut. This is available with right-hand or left-hand threads.

MACHINE SCREW SPECIFICATIONS	RH	LH
ALLOY STEEL SCREW PART NO.	AS 600 R 075 A	AS 600 L 075 A
STAINLESS STEEL SCREW PART NO.	AS 600 R 075 S	AS 600 L 075 S
THREAD FORM	ACME	
SCREW DIAMETER - TURNS/INCH	6" - 1 1/3	
PITCH/LEAD	0.750 IN.	
ROOT DIAMETER	5.169 IN.	
SCREW WEIGHT (LB / FT)	87	
TORQUE TO RAISE 1 POUND	0.485 IN.-LB.	
MAXIMUM SCREW LENGTH	20 FEET	

## Nut and Flange Specifications



NUT SPECIFICATIONS	RH	LH
NUT PART NO.	AN 600 R 075 B	AN 600 L 075 B
NUT WITH FLANGE PART NO.	AF 600 R 075	AF 600 L 075
DYNAMIC LOAD CAPACITY (LBS)	150,000	
STATIC LOAD CAPACITY (LBS)	470,000	
EFFICIENCY	25.4%	
MATERIAL	BRONZE	
NOMINAL DIAMETER "A"	8.00 IN.	
NUT LENGTH "B"	7.00 IN.	
THREAD LENGTH "C"	2.000 IN.	
THREAD SIZE	7.847-8 UN	
FLANGE PART NUMBER	FL-7847	
FLANGE DIAMETER "D"	14.00 IN	
FLANGE THICKNESS "E"	2.020 IN.	
FLANGE HOLE DIAMETER "F"	1.125 IN.	
NUMBER OF HOLES IN FLANGE "G"	6	
FLANGE BOLT CIRCLE "H"	12.000 IN.	
FLANGE MATERIAL	BLACK OXIDE COATED STEEL	