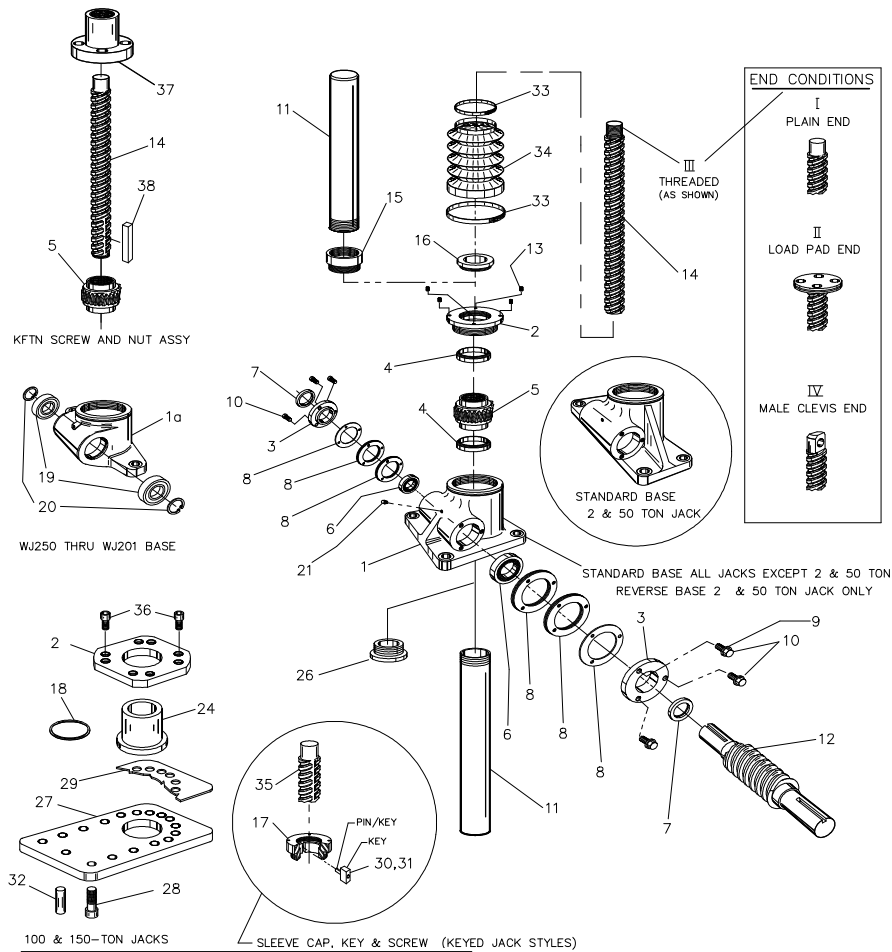


### 3-1 Exploded View

**PARTS LIST FOR ALL JOYCE STANDARD WORM GEAR SCREW JACKS**  
**Models "WJ", "DWJ", "WJT", "SWJ", And "DSWJ" Traveling Screw,**  
**Traveling Nut And Keyed For Traveling Nut Versions**  
**(Upright Styles shown for purpose of illustration)**



### 3-2 Parts List – Translating and KFTN jacks

**Parts list Table**

Item	Translating	Item	KFTN- Keyed For Traveling Nut
1	Sleeve	1	Sleeve
1a	Sleeve (WJ250 – WJ201 jack)	1a	Sleeve (WJ250 – WJ201 jack)
2	Sleeve Cap	2	Sleeve Cap
3	Bearing Cap (2)	3	Bearing Cap (2)
4	Thrust Bearing	4	Thrust Bearing
5	Worm Gear	5	Worm Gear
6	Worm Shaft Bearing (2)	6	Worm Shaft Bearing (2)
7	Worm Shaft Seal (2)	7	Worm Shaft Seal (2)
8	Shims	8	Shims
9	Bearing Cap Lockwasher (6-8)	9	Bearing Cap Lockwasher (6-8)
10	Bearing Cap Screw (6-8)	10	Bearing Cap Screw (6-8)
11	Protection Tube	12	Worm (Input Shaft)
12	Worm (Input Shaft)	13	Set Screw - sleeve cap (4)
13	Set Screw – sleeve cap (4)	14	Lifting Screw
14	Lifting Screw	16	Seal
15	Protection Tube Adapter (Inverted only)	18	O-ring seal**
17	Keyed Sleeve Cap*	19	Bushing (miniature jacks only) (2)
18	O-ring seal**	20	Retaining Ring (WJ250 - WJ51 jacks only) (2)
19	Bushing (miniature jacks only) (2)	21	Grease Fitting
20	Retaining Ring (WJ250 - WJ51 jacks only) (2)	22	Drive Screw (2)
21	Grease Fitting	23	Name Plate
22	Drive Screw (2)	24	Top Bushing**
23	Name Plate	26	Bushing (inverted only)
24	Top Bushing**	27	Base Plate**
26	Bushing (inverted only)	28	Sleeve Bolts (16)
27	Base Plate**	29	Base Shim
28	Sleeve Bolts (16)	32	Alignment Pin
29	Base Shim	33	Boot Clamp
30	Key* – keyed jacks	34	Bellows Boot
31	Key screw* – keyed jacks	37	Traveling Nut
32	Alignment Pin	38	Key - KFTN
33	Boot Clamp		
34	Bellows Boot		
35	Keyed Screw*		
36	Sleeve cap screws (8)**		

\* Keyed Jack styles only

\*\* 100 & 150 ton jacks only