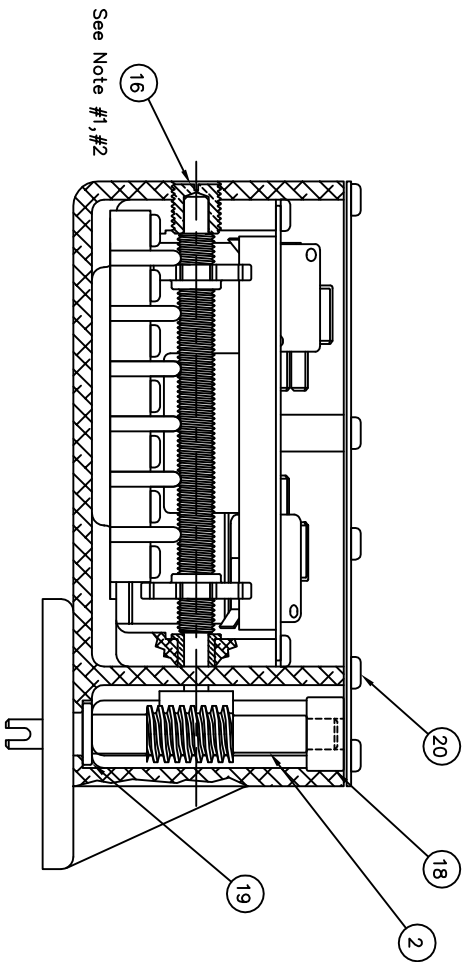
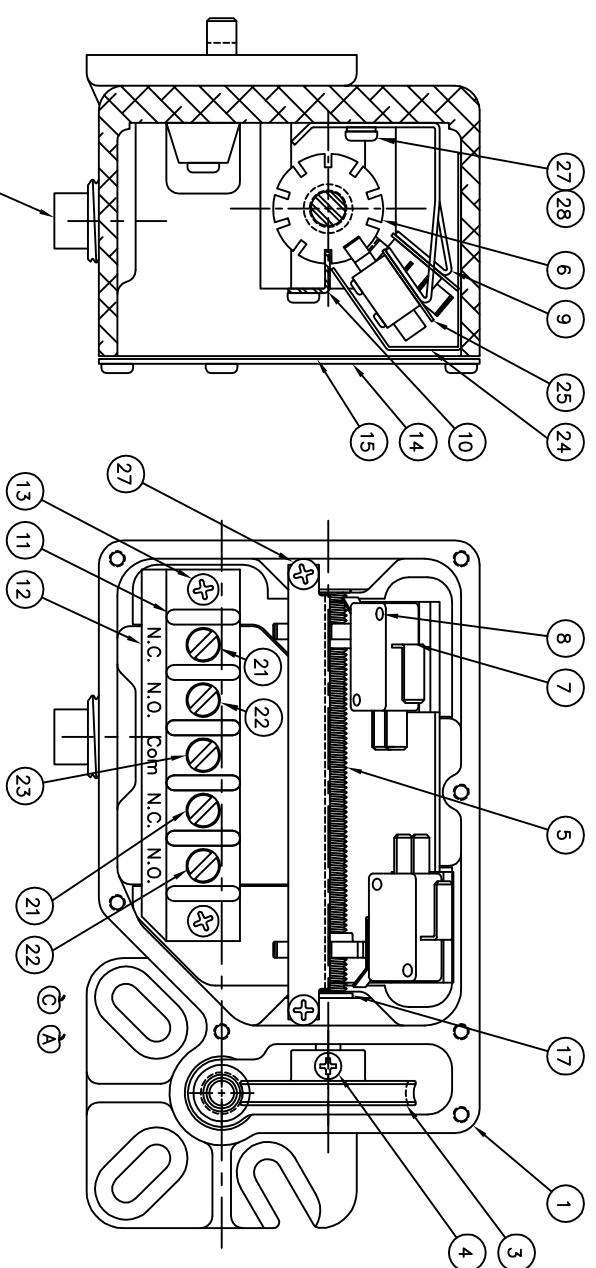
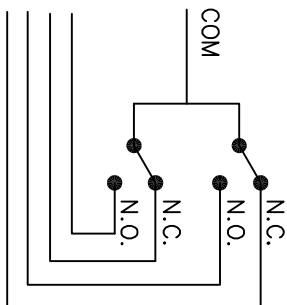


REV	BY	DESCRIPTION	DATE	BY
A	04553	CHANGED ITEMS 4, 8, & 13. ADDED ITEM 29.	12/08/04	BG
B	06242	REMOVED SPOT FACES	08/24/08	CMT
C	10054	ADDED LUBRICATION NOTE	02/05/10	CMT
D	10282	ADDED SPOTFACE, UPDATED WIRING INFORMATION	08/06/10	CMT
		PERMATEX RTV BLUE WAS LOCITE 242		



Note #1) DO NOT OVER TIGHTEN ITEM #16 (08040097), TIGHTEN TO MINIMIZE AXIAL ENDPLOY.
 #2) USE PERMATEX RTV BLUE ON THREADS, ITEM #16(08040097) AT ASSEMBLY.
 #3) LUBRICATE STANDARD ASSEMBLY WITH LUBRIPLATE GR-132 GREASE.

ITEM NO	QTY	DESCRIPTION	PART NO.	NAME
28	D4	2	62041	WASHERLOCK(SP)RS.0008
27	C4	4	08040445	SCREWS.L0008320025RNDHD
26	C4	1	20170	PIPE PLUG (1/2-14 NPT SOC HD)
25	D4	2	08040148	INSULATOR (LIMIT SWITCH)
24	D4	1	08040139	INSULATOR (LIMIT SWITCH)
23	C3	1	08040138	WHITE WIRE (LIM. SWITCH COMMON)
22	C3	2	08040137	BLUE WIRE (LIMIT SWITCH N.O.)
21	C3	2	08040136	RED WIRE (LIMIT SWITCH N.C.)
20	B2	7	82123	SCREWS.L0008320038P-ANHDP.LTD
19	B2	1	08040107	BUSHING (BOSTON #FB57-4)
18	B2	1	08040106	BUSHING (BOSTON #FB46-4)
17	D2	1	08040098	BUSHING (BOSTON #B46-4)
16	B4	1	08040097	BUSHING
15	D4	1	08040135	GASKET (LIMIT SWITCH COVER)
14	D4	1	08040096	COVER (LIMIT SWITCH HSG)
13	C3	2	08040620	SCREWS.L0008320062RNDHDPHILLPS
12	C3	1	08040109	TERMINAL STRIP MARKER (L/S)
11	C3	1	08040108	TERMINAL BLOCK (LIMIT SWITCH)
10	D4	1	08040093	BRACKET
9	D4	1	08040092	SWITCH BRACKET
8	D3	4	18040004	SCREWS.L00040400063P-ANHDPHILLPS
7	D3	2	E18030056	ELSMICROV71C17D844-429
6	D4	2	08040110	CAM (LIMIT SWITCH)
5	D3	1	08040099	CAM (DRIVE SCREW)
4	D2	1	08040621	SCREWS.S0006000078P-ANHDPSELFTAP
3	D2	1		See Chart
2	B2	1		See Chart
1	D2	1	08040095A	LIMIT SWITCH HSG. (MF08040094)

PARTS LIST

JOYCE/ DAYTON CORP.
 Dayton, Ohio U.S.A. 45401

ITEM NUMBER	RATIO	MAX. NUMBER OF TURNS	WORM NUMBER	GEAR NUMBER
E08040111	10:1	700	08040100	08040101
E08040112	20:1	1400	08040102	08040103
E08040113	40:1	2800	08040104	08040105

DIMENSIONS ARE IN INCHES
 UNLESS OTHERWISE SPECIFIED
 DEC. PLCS. TOLERANCE
 1 PLCS. .1
 2 PLCS. .05
 3 PLCS. .010
 4 PLCS. .005
 ANGULAR
 1
 MACHINED SURFACES
 BREAK CORNERS (RPTD.) AS SHOWN
 DO NOT SCALE DRAWING

THIS DOCUMENT AND THE DATA DESCRIBED HEREIN OR HEREINTO IS NOT TO BE REPRODUCED OR TRANSMITTED IN ANY FORM OR BY ANY MEANS, ELECTRONIC OR MECHANICAL, WITHOUT THE PERMISSION OF JOYCE/DAYTON CORPORATION.

JOYCE/ DAYTON CORP.
 Dayton, Ohio U.S.A. 45401
 Assembly, Limit Switch

SCALE FULL
 4M149
 C-08040292
 SHEET 1 OF 1