

# SCREWS AND NUTS



Machine Screws & Nuts

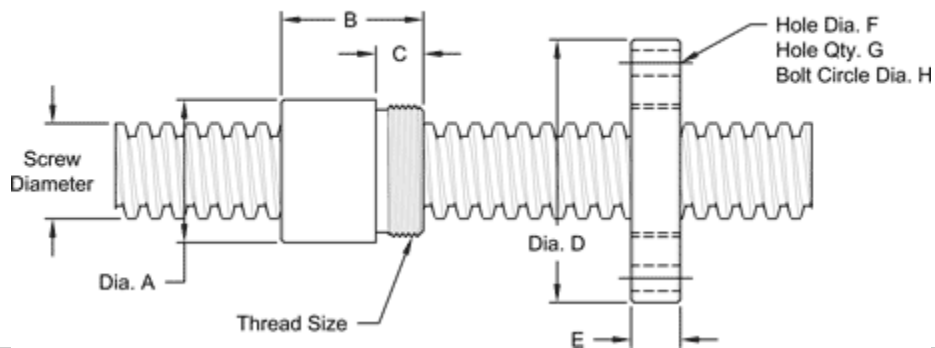


[www.joycedayton.com](http://www.joycedayton.com)

**This 1/2 - 8 stub acme machine screw** is available in stainless steel with a corresponding aluminum bronze nut. Right hand threads are available.

MACHINE SCREW SPECIFICATIONS	RH
STAINLESS STEEL SCREW PART NO.	SS 050 R 013 S
THREAD FORM	STUB ACME
SCREW DIAMETER-TURNS / INCH	1/2 - 8
PITCH / LEAD	0.125 IN.
ROOT DIAMETER	0.38 IN.
SCREW WEIGHT (LB. / FT.)	0.53
TORQUE TO RAISE 1 POUND	0.050 IN - LB
MAXIMUM SCREW LENGTH	12 FEET

### Nut and Flange Specifications

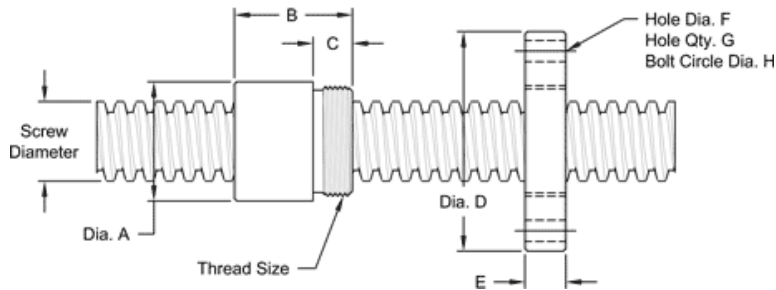


NUT SPECIFICATIONS	RH
NUT PART NO.	SN 050 R 013 B
NUT WITH FLANGE PART NO.	SF 050 R 013
DYNAMIC LOAD CAPACITY (LBS)	1,250
STATIC LOAD CAPACITY (LBS)	4,000
EFFICIENCY	40.5%
MATERIAL	BRONZE
NOMINAL DIAMETER "A"	1.12 IN.
NUT LENGTH "B"	0.75 IN.
THREAD LENGTH "C"	0.50 IN.
THREAD SIZE	0.937-16 UN
FLANGE PART NO.	FL-0937
FLANGE DIAMETER "D"	2.60 IN.
FLANGE THICKNESS "E"	0.53 IN.
FLANGE HOLE DIAMETER "F"	0.266 IN.
NUMBER OF HOLES IN FLANGE "G"	4
FLANGE BOLT CIRCLE "H"	2.090 IN.
FLANGE MATERIAL	STEEL

**This 5/8 - 8 stub acme machine screw** is available in stainless steel with a corresponding aluminum bronze nut. Choose from RH threads or LH threads.

MACHINE SCREW SPECIFICATIONS	RH	LH
STAINLESS STEEL SCREW PART NO.	SS 063 R 013 S	SS 063 L 013 S
THREAD FORM	STUB ACME	
SCREW DIAMETER - TURNS / INCH	5/8 - 8	
PITCH / LEAD	0.125 IN.	
ROOT DIAMETER	0.507 IN.	
SCREW WEIGHT (LB. /FT.)	0.85	
TORQUE TO RAISE 1 POUND	0.058 IN.-LB.	
MAXIMUM SCREW LENGTH	12 FEET	

### Nut and Flange Specifications

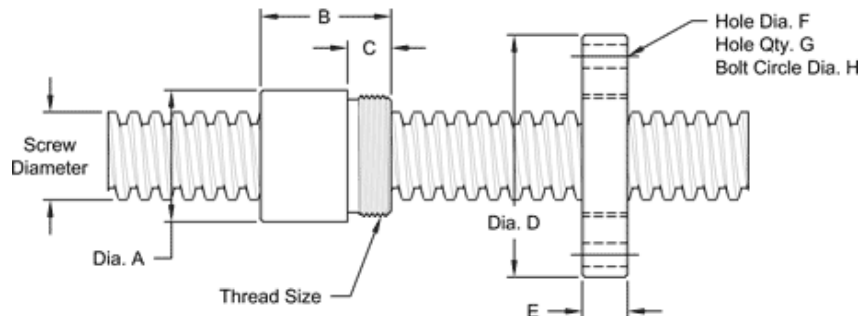


NUT SPECIFICATIONS	RH	LH
NUT PART NO.	SN 063 R 013 B	SN 063 L 013 B
FLANGED NUT PART NO	SF 063 R 013	SF 063 L 013
DYNAMIC LOAD CAPACITY (LBS)	1,953	
STATIC LOAD CAPACITY (LBS)	6,250	
EFFICIENCY	35.0 %	
MATERIAL	BRONZE	
NOMINAL DIAMETER "A"	1.12 IN.	
NUT LENGTH "B"	1.00 IN.	
THREAD LENGTH "C"	0.50 IN.	
THREAD SIZE	0.937-16 UN	
FLANGE PART NO.	FL-0937	
FLANGE DIAMETER "D"	2.60 IN.	
FLANGE THICKNESS "E"	0.53 IN.	
FLANGE HOLE DIAMETER "F"	0.266 IN.	
NUMBER OF HOLES IN FLANGE "G"	4	
FLANGE BOLT CIRCLE "H"	2.090 IN.	
FLANGE MATERIAL	BLACK OXIDE COATED STEEL	

**This 5/8 – 4 double lead stub acme machine screw** is available in stainless steel with a corresponding aluminum bronze nut. Both right-hand and left-hand threads are available.

MACHINE SCREW SPECIFICATIONS	RH	LH
STAINLESS STEEL SCREW PART NO.	SS 063 R 025 S	SS 063 L 025 S
THREAD FORM	STUB ACME	
SCREW DIAMETER TURNS / INCH	5/8 - 4	
PITCH / LEAD	0.125 IN./0.250 IN.	
ROOT DIAMETER	0.515 IN.	
SCREW WEIGHT (LB. / FT.)	0.85	
TORQUE TO RAISE 1 POUND	0.079 IN.- LB.	
MAXIMUM SCREW LENGTH	12 FEET	

### Nut and Flange Specifications

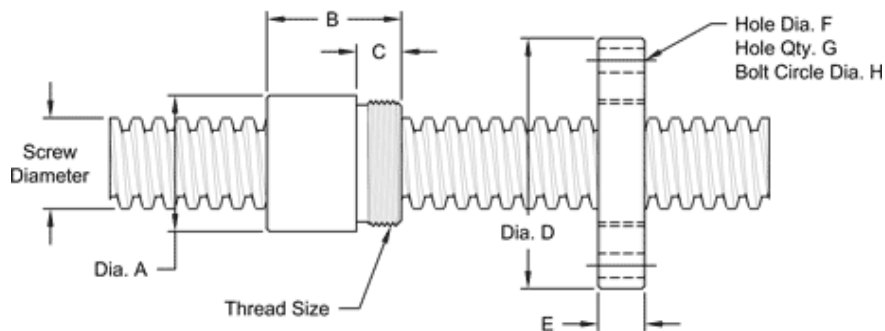


NUT SPECIFICATIONS	RH	LH
NUT PART NO.	SN 063 R 025 B	SN 063 L 025 B
NUT WITH FLANGE PART NO.	SF 063 R 025	SF 063 L 025
DYNAMIC LOAD CAPACITY (LBS.)	1,953	
STATIC LOAD CAPACITY (LBS.)	6,250	
EFFICIENCY	51.4%	
MATERIAL	BRONZE	
NOMINAL DIAMETER "A"	1.12 IN.	
NUT LENGTH "B"	1.00 IN.	
THREAD LENGTH "C"	0.50 IN.	
THREAD SIZE	0.937-16 UN	
FLANGE PART NO.	FL-0937	
FLANGE DIAMETER "D"	2.60 IN.	
FLANGE THICKNESS "E"	0.53 IN.	
FLANGE HOLE DIAMETER "F"	0.266 IN.	
NUMBER OF HOLES IN FLANGE "G"	4	
FLANGE BOLT CIRCLE "H"	2.090 IN.	
FLANGE MATERIAL	BLACK OXIDE COATED STEEL	

**This 5/8 – 2 double lead stub acme machine screw** is available in alloy steel with a corresponding aluminum bronze nut. Right-hand threads are available.

MACHINE SCREW SPECIFICATIONS	RH
ALLOY STEEL SCREW PART NO.	SS 063 R 050 A
THREAD FORM	STUB ACME
SCREW DIAMETER (TURNS / INCH)	5/8 - 2
PITCH / LEAD	0.250 IN./ 0.500 IN.
ROOT DIAMETER	0.426 IN.
SCREW WEIGHT (LB./FT.)	0.85
TORQUE TO RAISE 1 POUND	0.120 IN.- LB..
MAXIMUM SCREW LENGTH	12 FEET

### Nut and Flange Specifications

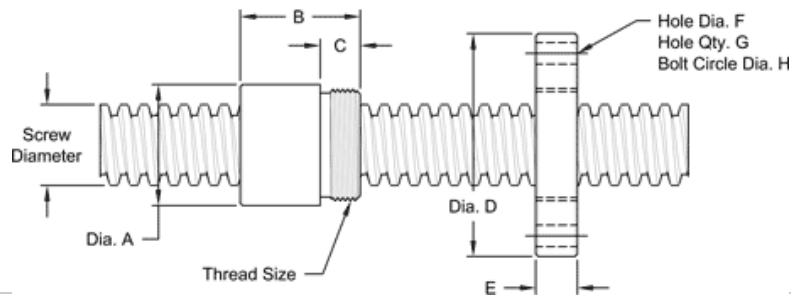


NUT SPECIFICATIONS	RH
NUT PART NO.	SN 063 R 050 B
NUT WITH FLANGE PART NO.	SF 063 R 050
DYNAMIC CAPACITY (LBS.)	1,953
STATIC CAPACITY (LBS.)	6,250
EFFICIENCY	67.6%
MATERIAL	BRONZE
NOMINAL DIAMETER "A"	1.12 IN.
NUT LENGTH "B"	1.00 IN.
THREAD LENGTH "C"	0.50 IN.
THREAD SIZE	0.937-16 UN
FLANGE PART NO.	FL-0937
FLANGE DIAMETER "D"	2.60 IN.
FLANGE THICKNESS "E"	0.53 IN.
FLANGE HOLE DIAMETER "F"	0.266 IN.
NUMBER OF HOLES IN FLANGE "G"	4
FLANGE BOLT CIRCLE "H"	2.090 IN.
FLANGE MATERIAL	BLACK OXIDE COATED STEEL

**This 3/4 – 5 single lead acme machine screw** is available in alloy steel with a corresponding aluminum bronze nut. Choose from right-hand or left-hand threads.

<b>MACHINE SCREW JACK SPECIFICATIONS</b>	<b>RH</b>	<b>LH</b>
<b>ALLOY STEEL SCREW PART NO.</b>	<b>AS 075 R 020 A</b>	<b>AS 075 L 020 A</b>
THREAD FORM	ACME	
SCREW DIAMETER (TURNS / INCH)	3/4-5	
PITCH / LEAD	0.200 IN.	
ROOT DIAMETER	0.502 IN.	
SCREW WEIGHT (LB. / FT.)	1.2	
TORQUE TO RAISE 1 POUND	0.075 IN.- LB.	
MAXIMUM SCREW LENGTH	12 FEET	

### Nut and Flange Specifications

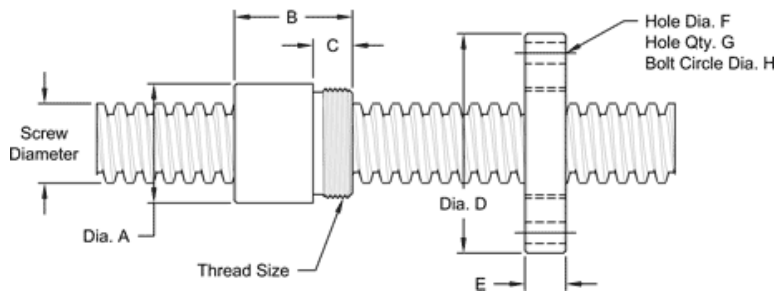


<b>NUT SPECIFICATIONS</b>	<b>RH</b>	<b>LH</b>
<b>NUT PART NO.</b>	<b>AN 075 R 020 B</b>	<b>AN 075 L 020 B</b>
<b>NUT WITH FLANGE PART NO.</b>	<b>AF 075 R 020</b>	<b>AF 075 L 020</b>
DYNAMIC LOAD CAPACITY (LBS.)	2,812	
STATIC LOAD CAPACITY (LBS.)	9,000	
EFFICIENCY	43.6%	
MATERIAL	BRONZE	
NOMINAL DIAMETER "A"	1.12 IN.	
NUT LENGTH "B"	1.25 IN.	
THREAD LENGTH "C"	0.50 IN.	
THREAD SIZE	1.000 -18 UN	
<b>FLANGE PART NO.</b>	<b>FL-1000</b>	
FLANGE DIAMETER "D"	2.63 IN.	
FLANGE THICKNESS "E"	0.53 IN.	
FLANGE HOLE DIAMETER "F"	0.266 IN.	
NUMBER OF HOLES IN FLANGE "G"	4	
FLANGE BOLT CIRCLE "H"	2.090 IN.	
FLANGE MATERIAL	BLACK OXIDE COATED STEEL	

**This 7/8 – 2 Double lead acme machine screw** is available in both alloy steel and stainless steel with a corresponding aluminum bronze nut. Choose from right-hand or left-hand threads.

MACHINE SCREW SPECIFICATIONS	RH	LH
ALLOY STEEL SCREW PART NO.	AS 088 R 050 A	AS 088 L 050 A
STAINLESS STEEL SCREW PART NO.	AS 088 R 050 S	AS 088 L 050 S
THREAD FORM	ACME	
SCREW DIAMETER (TURNS / INCH)	7/8" - 2	
PITCH / LEAD	0.250 IN./0.500 IN.	
ROOT DIAMETER	0.574 IN.	
SCREW WEIGHT (LBS. / FOOT)	1.7	
TORQUE TO RAISE 1 POUND	0.132 IN.- LB.	
MAXIMUM SCREW LENGTH	12 FEET	

### Nut and Flange Specifications

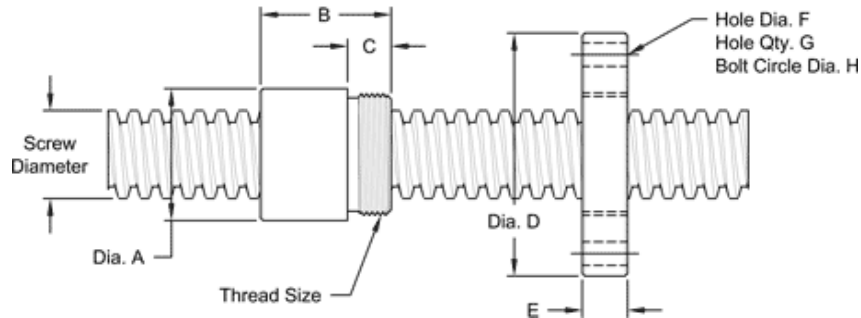


NUT SPECIFICATIONS	RH	LH
NUT PART NO.	AN 088 R 050 B	AN 088 L 050 B
NUT WITH FLANGE PART NO.	AF 088 R 050	AF 088 L 050
DYNAMIC LOAD CAPACITY (LBS.)	3,828	
STATIC LOAD CAPACITY (LBS.)	12,250	
EFFICIENCY	61.5%	
MATERIAL	BRONZE	
NOMINAL DIAMETER "A"	1.50 IN.	
NUT LENGTH "B"	1.50 IN.	
THREAD LENGTH "C"	0.50 IN.	
THREAD SIZE	1.375-16 UN	
FLANGE PART NO.	FL-1375	
FLANGE DIAMETER "D"	2.75 IN.	
FLANGE THICKNESS "E"	0.52 IN.	
FLANGE HOLE DIAMETER "F"	0.266 IN.	
NUMBER OF HOLES IN FLANGE "G"	4	
FLANGE BOLT CIRCLE "H"	2.260 IN.	
FLANGE MATERIAL	BLACK OXIDE COATED STEEL	

**This 1" - 10 single lead acme machine screw** is available in both alloy steel and stainless steel with a corresponding aluminum bronze nut. Choose from right-hand or left-hand threads.

MACHINE SCREW SPECIFICATIONS	RH	LH
ALLOY STEEL SCREW PART NO.	AS 100 R 010 A	AS 100 L 010 A
STAINLESS STEEL SCREW PART NO.	AS 100 R 010 S	AS 100 L 010 S
THREAD FORM	ACME	
SCREW DIAMETER - TURNS / INCH	1-10	
PITCH / LEAD	0.100 IN.	
ROOT DIAMETER	0.857 IN.	
SCREW WEIGHT (LB./FT)	2.1	
TORQUE TO RAISE 1 POUND	0.078 IN.-LB.	
MAXIMUM SCREW LENGTH	12 FEET	

### Nut and Flange Specifications



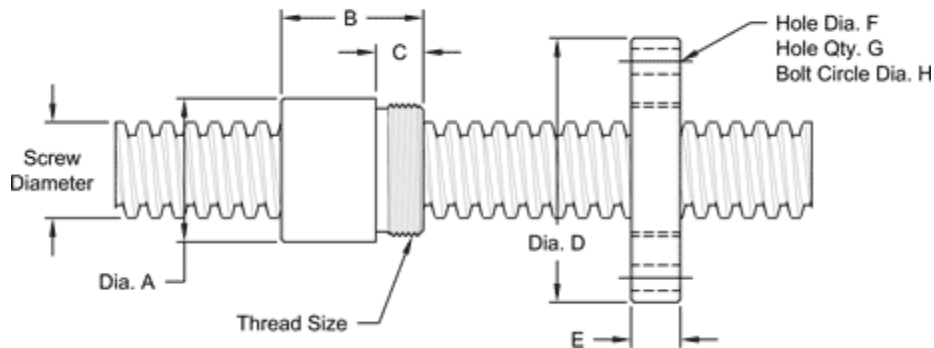
NUT SPECIFICATIONS	RH	LH
NUT PART NO.	AN 100 R 010 B	AN 100 L 010 B
NUT WITH FLANGE PART NO.	AF100 R 010	AF 100 L 010
DYNAMIC LOAD CAPACITY (LBS.)	5,000	
STATIC LOAD CAPACITY (LBS.)	16,000	
EFFICIENCY	21.2%	
MATERIAL	BRONZE	
NOMINAL DIAMETER "A"	1.50 IN.	
NUT LENGTH "B"	1.50 IN.	
THREAD LENGTH "C"	0.50 IN.	
THREAD SIZE	1.375-16 UN	
FLANGE PART NO.	FL-1375	
FLANGE DIAMETER "D"	2.75 IN.	
FLANGE THICKNESS "E"	0.52 IN.	
FLANGE HOLE DIAMETER "F"	0.266 IN.	
NUMBER OF HOLES IN FLANGE "G"	4	
FLANGE BOLT CIRCLE "H"	2.260 IN.	
FLANGE MATERIAL	BLACK OXIDE COATED STEEL	



This 1" - 4 single lead acme machine screw is available in both alloy steel and stainless steel with a corresponding aluminum bronze nut. Choose from right-hand or left-hand threads.

MACHINE SCREW SPECIFICATIONS	RH	LH
ALLOY STEEL SCREW NO.	AS 100 R 025 A	AS 100 L 025 A
STAINLESS STEEL SCREW NO.	AS 100 R 025 S	A S100 L 025 S
THREAD FORM		ACME
SCREW DIAMETER - TURNS / INCH		1-4
PITCH / LEAD		0.250 IN.
ROOT DIAMETER		0.699 IN.
SCREW WEIGHT (LB./FT.)		2.2
TORQUE TO RAISE 1 POUND		0.097 IN.-LB.
MAXIMUM SCREW LENGTH		12 FEET

### Nut and Flange Specifications

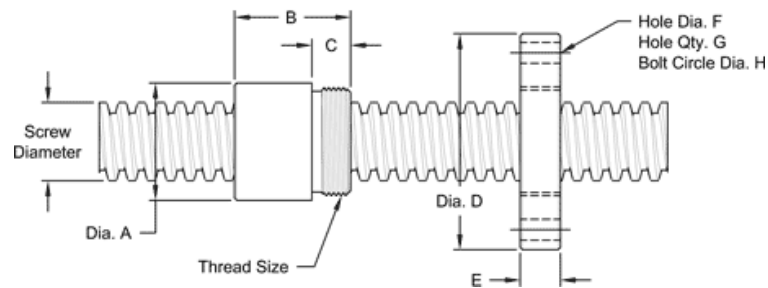


NUT SPECIFICATIONS	RH	LH
NUT PART NO.	AN 100 R 025 B	AN 100 L 025 B
NUT WITH FLANGE PART NO.	AF 100 R 025	AF 100 L 025
DYNAMIC LOAD CAPACITY (LBS.)		5,000
STATIC LOAD CAPACITY (LBS.)		16,000
EFFICIENCY		41.9%
MATERIAL		BRONZE
NOMINAL DIAMETER "A"		1.50 IN.
NUT LENGTH "B"		1.50 IN.
THREAD LENGTH "C"		0.50 IN.
THREAD SIZE		1.375-16 UN
FLANGE PART NUMBER	FL-1375	
FLANGE DIAMETER "D"		2.75 IN.
FLANGE THICKNESS "E"		0.52 IN.
FLANGE HOLE DIAMETER "F"		0.266 IN.
NUMBER OF HOLES IN FLANGE "G"		4
FLANGE BOLT CIRCLE "H"		2.260 IN.
FLANGE MATERIAL		BLACK OXIDE COATED STEEL

**This 1" – 2 double lead acme machine screw** is available in both alloy steel and stainless steel with a corresponding aluminum bronze nut. Choose from right-hand or left-hand threads.

MACHINE SCREW SPECIFICATIONS	RH	LH
ALLOY STEEL SCREW PART NO.	AS 100 R 050 A	AS 100 L 050 A
STAINLESS STEEL SCREW PART NO.	AS 100 R 050 S	AS 100 L 050 S
THREADD FORM	ACME	
SCREW DIAMETER - TURNS / INCH	1"-2	
PITCH / LEAD	0.250 IN. / 0.500 IN.	
ROOT DIAMETER	0.699 IN.	
SCREW WEIGHT ((LB./FT.))	2.2	
TORQUE TO RAISE 1 POUND	0.140 IN. LB.	
MAXIMUM SCREW LENGTH	12 FEET	

### Nut and Flange Specifications

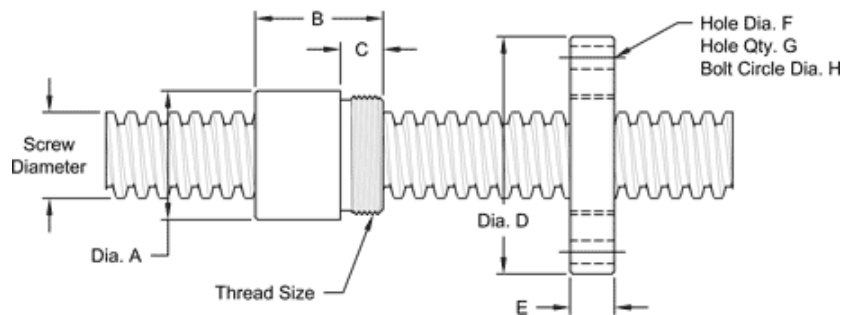


NUT SPECIFICATIONS	RH	LH
NUT PART NUMBER	AN 100 R 050 B	AN 100 L 050 B
NUT WITH FLANGE	AF 100 R 050	AF 100 L 050
DYNAMIC LOAD CAPACITY (LBS.)	5,000	
STATIC LOAD CAPACITY (LBS.)	16,000	
EFFICIENCY	58.20%	
MATERIAL	BRONZE	
NOMINAL DIAMETER "A"	1.50 IN.	
NUT LENGTH "B"	1.50 IN.	
THREAD LENGTH "C"	0.50 IN.	
THREAD SIZE	1.375-16 UN	
FLANGE PART NO.	FL-1375	
FLANGE DIAMETER "D"	2.75 IN.	
FLANGE THICKNESS "E"	0.52 IN.	
FLANGE HOLE DIAMETER "F"	0.266 IN.	
NUMBER OF HOLES IN FLANGE "G"	4	
FLANGE BOLT CIRCLE "H"	2.260 IN.	
FLANGE MATERIAL	BLACK OXIDE COATED STEEL	

**This 1" – 1 multiple lead stub acme machine screw** is available in alloy steel with a corresponding aluminum bronze nut. Right-hand threads are available.

MACHINE SCREW SPECIFICATIONS	RH
ALLOY STEEL SCREW PART NO.	SS 100 R 100 A
THREAD FORM	STUB ACME
SCREW DIAMETER (TURNS/INCH)	1-1
PITCH / LEAD	0.010IN./1.00 IN.
ROOT DIAMETER	.930 IN.
SCREW WEIGHT (LB./FT.)	2.4
TORQUE TO RAISE 1 POUND	0.233 IN.- LB.
MAXIMUM SCREW LENGTH	12 FEET

### Nut and Flange Specifications

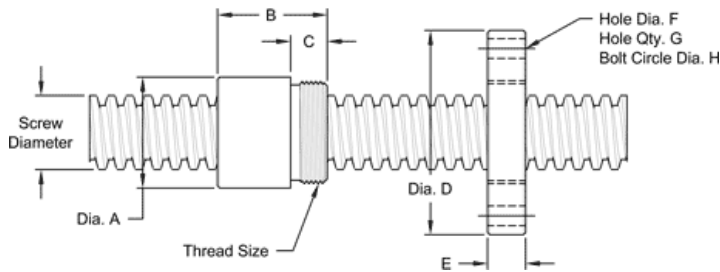


NUT SPECIFICATIONS	RH
NUT PART NO.	SN 100 R 100 B
NUT WITH FLANGE PART NO.	SN 100 R 100
DYNAMIC LOAD CAPACITY (LBS.)	5,000
STATIC LOAD CAPACITY (LBS.)	16,000
EFFICIENCY	69.70%
MATERIAL	BRONZE
NOMINAL DIAMETER "A"	1.50 IN.
NUT LENGTH "B"	1.50 IN.
THREAD LENGTH "C"	0.50 IN.
THREAD SIZE	1.375-16 UN
FLANGE PART NUMBER	FL-1375
FLANGE DIAMETER "D"	2.75 IN.
FLANGE THICKNESS "E"	0.52 IN.
FLANGE HOLE DIAMETER "F"	0.266 IN.
NUMBER OF HOLES IN FLANGE "G"	4
FLANGE BOLT CIRCLE "H"	2.260 IN.
FLANGE MATERIAL	BLACK OXIDE COATED STEEL

**This 1 1/4" – 4 single lead acme machine screw** is available in alloy steel and stainless steel with a corresponding aluminum bronze nut. Choose from right-hand or left-hand screw threads

MACHINE SCREW SPECIFICATIONS	RH	LH
ALLOY STEEL SCREW PART NO.	AS 125 R 025 A	AS 125 L 025 A
STAINLESS STEEL SCREW PART NO.	AS 125 R 025 S	AS 125 L 025 S
THREAD FORM	ACME	
SCREW DIAMETER (TURNS / INCH)	1 1/4" - 4	
PITCH / LEAD	0.250 IN.	
ROOT DIAMETER	0.947 IN.	
SCREW WEIGHT (LB./FT.)	3.3	
TORQUE TO RAISE 1 POUND	0.113 IN.-LB.	
MAXIMUM SCREW LENGTH	12 FEET	

### Nut and Flange Specifications



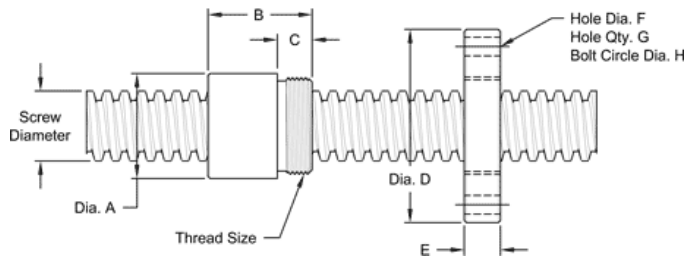
NUT SPECIFICATIONS	RH	LH
NUT PART NO.	AN 125 R 025 B	AN 125 L 025 B
NUT WITH FLANGE PART NO.	AF 125 R 025	AF 125 L 025
DYNAMIC LOAD CAPACITY (LBS.)	7,812	
STATIC LOAD CAPACITY (LBS.)	25,000	
EFFICIENCY	36.0%	
MATERIAL	BRONZE	
NOMINAL DIAMETER "A"	2.12 IN.	
NUT LENGTH "B"	1.75 IN.	
THREAD LENGTH "C"	0.812 IN.	
THREAD SIZE	1.967-18 UN	
FLANGE PART NO.	FL-1967	
FLANGE DIAMETER "D"	4.20 IN.	
FLANGE THICKNESS "E"	0.832 IN.	
FLANGE HOLE DIAMETER "F"	0.397 IN.	
NUMBER OF HOLES IN FLANGE "G"	4	
FLANGE BOLT CIRCLE "H"	3.440 IN.	
FLANGE MATERIAL	BLACK OXIDE COATED STEEL	

**This 1 1/2" – 4 single lead acme machine screw** is available in alloy steel and stainless steel with a corresponding aluminum bronze nut. Choose from right-hand or left-hand screw threads.

MACHINE SCREW SPECIFICATIONS	RH	LH
ALLOY STEEL SCREW PART NO.	AS 150 R 025 A	AS 150 L 025 A
STAINLESS STEEL SCREW PART NO.	AS 150 R 025 S	AS 150 L 025 S
THREAD FORM		ACME
SCREW DIAMETER (TURNS / INCH)		1 1/2" - 4
PITCH / LEAD		0.250 IN.
ROOT DIAMETER		1.196 IN.
SCREW WEIGHT ( LB./FT.)		5.0
TORQUE TO RAISE 1 POUND		0.130 IN.-LB.
MAXIMUM SCREW LENGTH		20 FEET*

\* 12 feet for stainless steel stock

### Nut and Flange Specifications



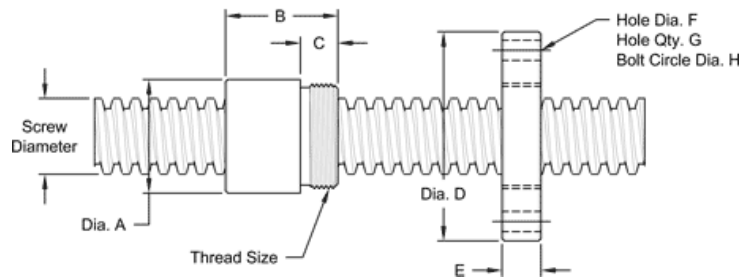
NUT SPECIFICATIONS	RH	LH
NUT PART NO.	AN 150 R 025 B	AN 150 L 025 B
NUT WITH FLANGE PART NO.	AF 150 R 025	AF 150 L 025
DYNAMIC LOAD CAPACITY (LBS.)		11,250
STATIC LOAD CAPACITY (LBS.)		36,000
EFFICIENCY		31.6%
MATERIAL		BRONZE
NOMINAL DIAMETER "A"		2.12 IN.
NUT LENGTH "B"		2.30 IN.
THREAD LENGTH "C"		0.812 IN.
THREAD SIZE		1.967-18 UN
FLANGE PART NO.	FL-1967	
FLANGE DIAMETER "D"		4.20 IN.
FLANGE THICKNESS "E"		0.832 IN.
FLANGE HOLE DIAMETER "F"		0.397 IN.
NUMBER OF HOLES IN FLANGE "G"		4
FLANGE BOLT CIRCLE "H"		3.440 IN.
FLANGE MATERIAL		BLACK OXIDE COATED STEEL

**This 1 1/2"-2 double lead acme machine screw** is available in both alloy steel and stainless steel with a corresponding aluminum bronze nut. Choose from right-hand or left-hand threads.

MACHINE SCREW SPECIFICATIONS	RH	LH
ALLOY STEEL SCREW PART NO.	AS 150 R 050 A	AS 150 L 050 A
STAINLESS STEEL SCREW PART NO.	AS 150 R 050 S	AS 150 L 050 S
THREAD FORM	ACME	
SCREW DIAMETER - TURNS / INCH	1 1/2" - 2	
PITCH / LEAD	0.250 IN./0.500 IN.	
ROOT DIAMETER	1.196 IN.	
SCREW WEIGHT (LB./FT.)	4.9	
TORQUE TO RAISE 1 POUND	0.171 IN.-LB.	
MAXIMUM SCREW LENGTH	20 FEET"	

\* 12 feet for stainless steel stock

### Nut and Flange Specifications



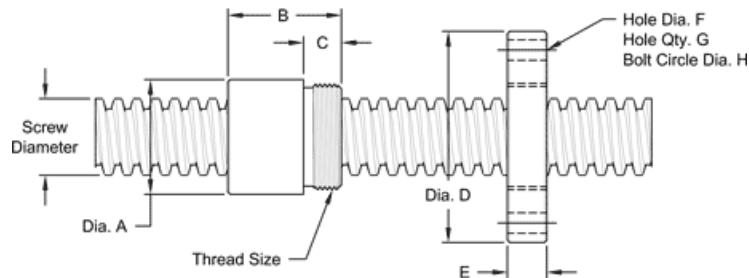
NUT SPECIFICATIONS	RH	LH
NUT PART NO.	AN 150 R 050 B	AN 150 L 050 B
NUT WITH FLANGE PART NO.	AF 150 R 050	AF 150 L 050
DYNAMIC LOAD CAPACITY (LBS.)	11,250	
STATIC LOAD CAPACITY (LBS.)	36,000	
EFFICIENCY	47.6%	
MATERIAL	BRONZE	
NOMINAL DIAMETER "A"	2.12 IN.	
NUT LENGTH "B"	2.30 IN.	
THREAD LENGTH "C"	0.812 IN.	
THREAD SIZE	1.967-18 UN	
FLANGE PART NO.	FL-1967	
FLANGE DIAMETER "D"	4.20 IN.	
FLANGE THICKNESS "E"	0.832 IN.	
FLANGE HOLE DIAMETER "F"	0.397 IN.	
NUMBER OF HOLES IN FLANGE "G"	4	
FLANGE BOLT CIRCLE "H"	3.440 IN.	
FLANGE MATERIAL	BLACK OXIDE COATED STEEL	

**This 1 1/2"-2 2/3 single lead STUB acme machine screw** is available in both alloy steel and stainless steel with a corresponding aluminum bronze nut. Choose from right-hand or left-hand threads.

MACHINE SCREW SPECIFICATIONS	RH	LH
ALLOY STEEL SCREW PART NO.	SS 150 R 038 A	SS 150 L 038 A
STAINLESS STEEL SCREW PART NO.	SS 150 R 038 S	SS 150 L 038 S
THREAD FORM	STUB ACME	
SCREW DIAMETER - TURNS / INCH	1 1/2" - 2 2/3	
PITCH / LEAD	0.375 IN.	
ROOT DIAMETER	1.216 IN.	
SCREW WEIGHT (LB./FT.)	4.6	
TORQUE TO RAISE 1 POUND	0.173 IN.-LB.	
MAXIMUM SCREW LENGTH	20 FEET*	

\* 12 feet for stainless steel stock

### Nut and Flange Specifications

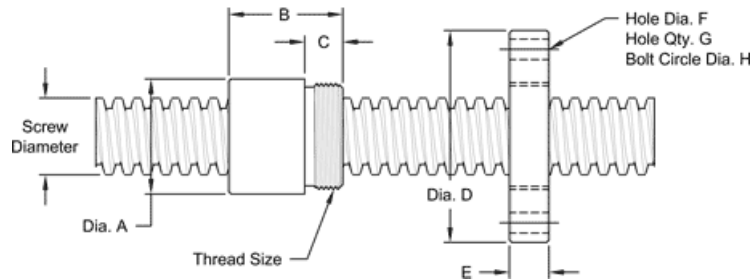


NUT SPECIFICATIONS	RH	LH
NUT PART NO.	SN 150 R 038 B	SN 150 L 038 B
NUT WITH FLANGE PART NO.	SF 150 R 038	SF 150 L 038
DYNAMIC LOAD CAPACITY (LBS.)	11,250	
STATIC LOAD CAPACITY (LBS.)	36,000	
EFFICIENCY	40.5%	
MATERIAL	BRONZE	
NOMINAL HOLE DIAMETER "A"	2.12 IN.	
NUT LENGTH "B"	2.30 IN.	
THREAD LENGTH "C"	0.812 IN.	
THREAD SIZE	1.967-18 UN	
FLANGE PART NO.	FL-1967	
FLANGE DIAMETER "D"	4.20 IN.	
FLANGE THICKNESS "E"	0.832 IN.	
FLANGE HOLE DIAMETER "F"	0.397 IN.	
NUMBER OF HOLES IN FLANGE "G"	4	
FLANGE BOLT CIRCLE "H"	3.440 IN.	
FLANGE MATERIAL	BLACK OXIDE COATED STEEL	

**This 1 1/2"-2 2/3 single lead ACME machine screw** is available in both alloy steel and stainless steel with a corresponding aluminum bronze nut. Choose from right-hand or left-hand threads.

MACHINE SCREW SPECIFICATIONS	RH	LH
ALLOY STEEL SCREW PART NO.	AS 150 R 038 A	AS 150 L 038 A
STAINLESS STEEL SCREW PART NO.	AS 150 R 038 S	AS 150 L 038 S
THREAD FORM	ACME	
SCREW DIAMETER - TURNS / INCH	1 1/2" - 2 2/3	
PITCH / LEAD	0.375 IN.	
ROOT DIAMETER	1.066 IN.	
SCREW WEIGHT (LB./FT.)	4.6	
TORQUE TO RAISE 1 POUND	0.146 IN.-LB.	
MAXIMUM SCREW LENGTH	20 FEET*	
*12 FEET FOR STAINLESS STEEL STOCK		

### Nut and Flange Specifications



NUT SPECIFICATIONS	RH	LH
NUT PART NO.	AN 150 R 038 B	AN 150 L 038 B
NUT WITH FLANGE PART NO.	AF 150 R 038	AF 150 L 038
DYNAMIC LOAD CAPACITY (LBS.)	11,250	
STATIC LOAD CAPACITY (LBS.)	36,000	
EFFICIENCY	41.8%	
MATERIAL	BRONZE	
NOMINAL DIAMETER "A"	2.12 IN.	
NUT LENGTH "B"	2.30 IN.	
THREAD LENGTH "C"	0.812 IN.	
THREAD SIZE	1.967-18 UN	
FLANGE PART NO.	FL-1967	
FLANGE DIAMETER "D"	4.20 IN.	
FLANGE THICKNESS "E"	0.832 IN.	
FLANGE HOLE DIAMETER "F"	0.397 IN.	
NUMBER OF HOLES IN FLANGE "G"	4	
FLANGE BOLT CIRCLE "H"	3.440 IN.	
FLANGE MATERIAL	BLACK OXIDE COATED STEEL	

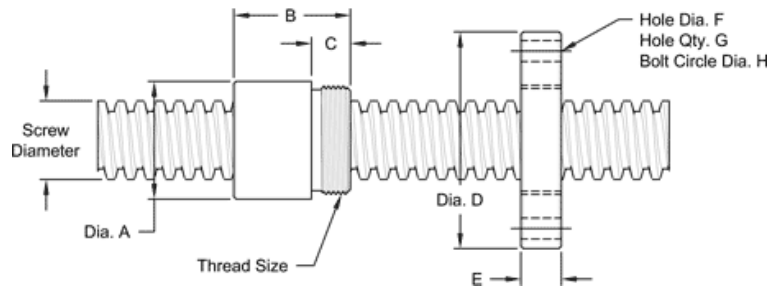


**This 2"-4 single lead acme machine screw** is available in both alloy steel and stainless steel with a corresponding aluminum bronze nut. Choose from right-hand or left-hand threads.

MACHINE SCREW SPECIFICATIONS	RH	LH
ALLOY STEEL SCREW PART NO.	AS 200 R 025 A	AS 200 L 025 A
STAINLESS STEEL SCREW PART NO.	AS 200 R 025 S	AS 200 L 025 S
THREAD FORM	ACME	
SCREW DIAMETER - TURNS / INCH	2" - 4	
PITCH / LEAD	0.250 IN.	
ROOT DIAMETER	1.695 IN.	
SCREW WEIGHT (LB./ FT.)	9.3	
TORQUE TO RAISE 1 POUND	0.162 IN.- LB.	
MAXIMUM SCREW LENGTH	20 FEET*	

\*12 feet for stainless steel stock

### Nut and Flange Specifications



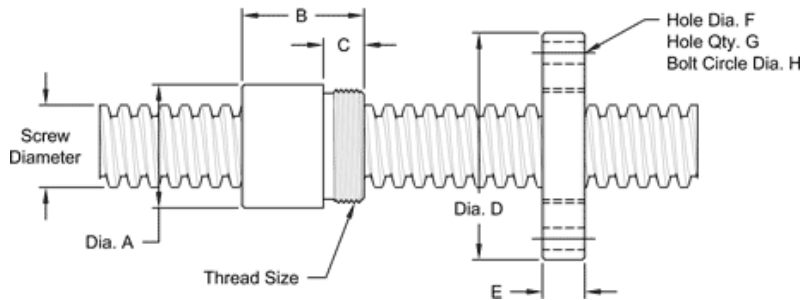
NUT SPECIFICATIONS	RH	LH
NUT PART NO.	AN 200 R 025 B	AN 200 L 025 B
NUT WITH FLANGE PART NO.	AF 200 R 025	AF 200 L 025
DYNAMIC LOAD CAPACITY (LBS.)	20,000	
STATIC LOAD CAPACITY (LBS.)	64,000	
EFFICIENCY	25.4%	
MATERIAL	BRONZE	
NOMINAL DIAMETER "A"	2.75 IN.	
NUT LENGTH "B"	2.75 IN.	
THREAD LENGTH "C"	0.880 IN.	
THREAD SIZE	2.548-18 UN	
FLANGE PART NO.	FL-2548	
FLANGE DIAMETER "D"	4.94 IN.	
FLANGE THICKNESS "E"	0.895 IN.	
FLANGE HOLE DIAMETER "F"	0.531 IN.	
NUMBER OF HOLES IN FLANGE "G"	4	
FLANGE BOLT CIRCLE "H"	4.062 IN.	
FLANGE MATERIAL	BLACK OXIDE COATED STEEL	

**This 2"-2 single lead acme machine screw** is available in both alloy steel and stainless steel with a corresponding aluminum bronze nut. These are available with right-hand or left-hand threads.

MACHINE SCREW SPECIFICATIONS	RH	LH
ALLOY STEEL SCREW PART NO.	AS 200 R 050 A	AS 200 L 050 A
STAINLESS STEEL SCREW PART NO.	AS 200 R 050 S	AS 200 L 050 S
THREAD FORM		ACME
SCREW DIAMETER - TURNS/INCH		2" - 2
PITCH/LEAD		0.500 IN.
ROOT DIAMETER		1.435 IN.
SCREW WEIGHT (LB./FT.)		8.1
TORQUE TO RAISE 1 POUND		0.195 IN.-LB.
MAXIMUM SCREW LENGTH		20 FEET*

\* 12 feet for stainless steel stock

### Nut and Flange Specifications



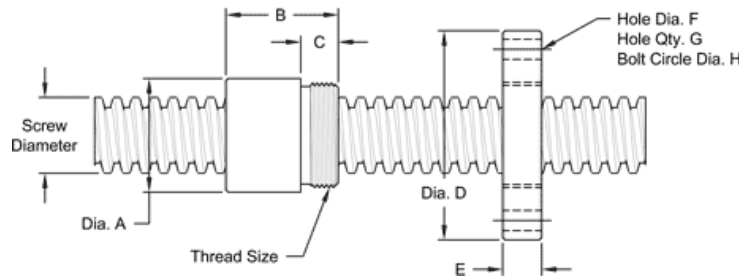
NUT SPECIFICATIONS	RH	LH
NUT PART NUMBER	AN 200 R 050 B	AN 200 R 050 B
NUT WITH FLANGE	AF 20 0R 050	AF 200 R 050
DYNAMIC LOAD CAPACITY (LBS.)		20,000
STATIC LOAD CAPACITY (LBS.)		64,000
EFFICIENCY		41.9%
MATERIAL		BRONZE
NOMINAL DIAMETER "A"		2.75 IN.
NUT LENGTH "B"		2.75 IN.
THREAD LENGTH "C"		0.880 IN.
THREAD SIZE		2.548-18 UN
FLANGE PART NUMBER		FL-2548
FLANGE DIAMETER "D"		4.94 IN
FLANGE THICKNESS "E"		0.895 IN.
FLANGE HOLE DIAMETER "F"		0.531 IN.
NUMBER OF HOLES IN FLANGE "G"		4
FLANGE BOLT CIRCLE "H"		4.062 IN.
FLANGE MATERIAL		BLACK OXIDE COATED STEEL

**This 2 1/4"-4 single lead acme machine screw** is available in both alloy steel and stainless steel with a corresponding aluminum bronze nut. These are available with right-hand or left-hand threads.

MACHINE SCREW SPECIFICATIONS	RH	LH
ALLOY STEEL SCREW PART NO.	AS 225 R 025 A	AS 225 L 025 A
STAINLESS STEEL SCREW PART NO.	AS 225 R 025 S	AS 225 L 025 S
THREAD FORM		ACME
SCREW DIAMETER - TURNS/INCH		2 1/4" - 4
PITCH/LEAD		0.250 IN.
ROOT DIAMETER		1.944 IN.
SCREW WEIGHT (LB/FT)		11.2
TORQUE TO RAISE 1 POUND		0.178 IN.-LB.
MAXIMUM SCREW LENGTH		20 FEET*

\* 12 feet for stainless steel stock

### Nut and Flange Specifications



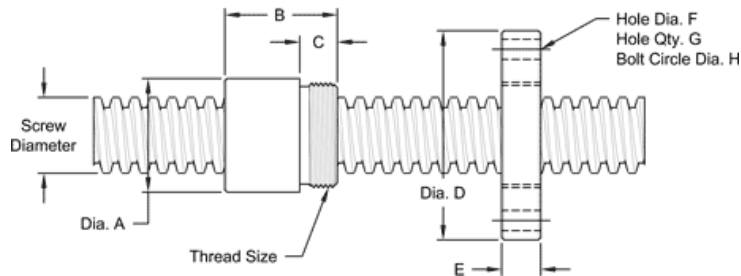
NUT SPECIFICATIONS	RH	LH
NUT PART NO.	AN 225 R 025 B	AN 225 L 025 B
NUT WITH FLANGE PART NO.	AF 225 R 025	AF 225 L 025
DYNAMIC LOAD CAPACITY (LBS)		30,000
STATIC LOAD CAPACITY (LBS)		81,000
EFFICIENCY		23.1%
MATERIAL		BRONZE
NOMINAL DIAMETER "A"		3.38 IN.
NUT LENGTH "B"		3.06 IN.
THREAD LENGTH "C"		1.560 IN.
THREAD SIZE		3.137-12 UN
FLANGE PART NUMBER	FL-3137	
FLANGE DIAMETER "D"		5.38 IN
FLANGE THICKNESS "E"		1.580 IN.
FLANGE HOLE DIAMETER "F"		0.656 IN.
NUMBER OF HOLES IN FLANGE "G"		6
FLANGE BOLT CIRCLE "H"		4.375 IN.
FLANGE MATERIAL		BLACK OXIDE COATED STEEL

**This 2 1/4"-2 single lead acme machine screw** is available in both alloy steel and stainless steel with a corresponding aluminum bronze nut. Choose from right-hand or left-hand threads.

MACHINE SCREW SPECIFICATIONS	RH	LH
ALLOY STEEL SCREW PART NO.	AS 225 R 050 A	AS 225 L 050 A
STAINLESS STEEL SCREW PART NO.	AS 225 R 050 S	AS 225 L 050 S
THREAD FORM	ACME	
SCREW DIAMETER - TPI	2 1/4" - 2	
PITCH/LEAD	0.500 IN.	
ROOT DIAMETER	1.685 IN.	
SCREW WEIGHT (LB./FT.)	10.6	
TORQUE TO RAISE 1 POUND	.211 IN.-LB.	
MAXIMUM SCREW LENGTH	20 FEET *	

\* 12 feet for stainless steel stock

### Nut and Flange Specifications



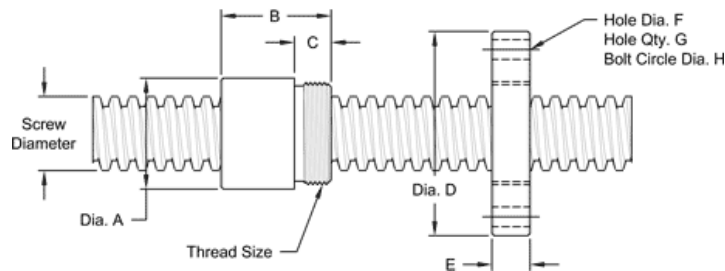
NUT SPECIFICATIONS	RH	LH
NUT PART NUMBER	AN 225 R 050 B	AN 225 L 050 B
NUT WITH FLANGE	AF 225 R 050	AF 225 L 050
DYNAMIC LOAD CAPACITY (LBS.)	30,000	
STATIC LOAD CAPACITY (LBS.)	81,000	
EFFICIENCY	38.7%	
MATERIAL	BRONZE	
NOMINAL DIAMETER "A"	3.38 IN.	
NUT LENGTH "B"	3.06 IN.	
THREAD LENGTH "C"	1.560 IN.	
THREAD SIZE	3.137-12 UN	
FLANGE PART NUMBER	FL-3137	
FLANGE DIAMETER "D"	5.38 IN	
FLANGE THICKNESS "E"	1.580 IN.	
FLANGE HOLE DIAMETER "F"	0.656 IN.	
NUMBER OF HOLES IN FLANGE "G"	6	
FLANGE BOLT CIRCLE "H"	4.375 IN.	
FLANGE MATERIAL	BLACK OXIDE COATED STEEL	

**This 2 1/2"-4 single lead acme machine screw** is available in both alloy steel and stainless steel with a corresponding aluminum bronze nut. This is available with right-hand or left-hand threads.

MACHINE SCREW SPECIFICATIONS	RH	LH
ALLOY STEEL SCREW PART NO.	AS 250 R 025 A	AS 250 L 025 A
STAINLESS STEEL SCREW PART NO.	AS 250 R 025 S	AS 250 L 025 S
THREAD FORM	ACME	
SCREW DIAMETER - TURNS/INCH	2 1/2" - 4	
PITCH/LEAD	0.250 IN.	
ROOT DIAMETER	2.193 IN.	
SCREW WEIGHT (LB./FT.)	13.4	
TORQUE TO RAISE 1 POUND	0.294 IN.-LB.	
MAXIMUM SCREW LENGTH	20 FEET*	

\* 12 feet for stainless steel stock

### Nut and Flange Specifications



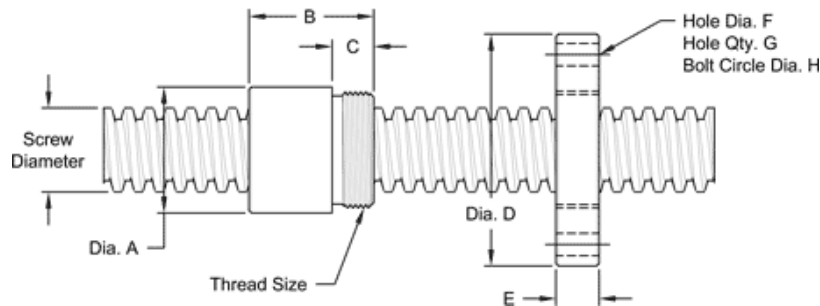
NUT SPECIFICATIONS	RH	LH
NUT PART NUMBER	AN 250 R 025 B	AN 250 L 025 B
NUT WITH FLANGE	AF 250 R 025	AF 250 L 025
DYNAMIC LOAD CAPACITY (LBS.)	40,000	
STATIC LOAD CAPACITY (LBS.)	100,000	
EFFICIENCY	21.2%	
MATERIAL	BRONZE	
NOMINAL DIAMETER "A"	3.38 IN.	
NUT LENGTH "B"	3.38 IN.	
THREAD LENGTH "C"	1.560 IN.	
THREAD SIZE	3.137-12 UN	
FLANGE PART NUMBER	FL-3137	
FLANGE DIAMETER "D"	5.38 IN	
FLANGE THICKNESS "E"	1.580 IN.	
FLANGE HOLE DIAMETER "F"	0.656 IN.	
NUMBER OF HOLES IN FLANGE "G"	6	
FLANGE BOLT CIRCLE "H"	4.375 IN.	
FLANGE MATERIAL	BLACK OXIDE COATED STEEL	

**This 2 1/2"-2 single lead acme machine screw** is available in both alloy steel and stainless steel with a corresponding aluminum bronze nut. Choose from right-hand or left-hand threads.

MACHINE SCREW SPECIFICATIONS	RH	LH
ALLOY STEEL SCREW PART NO.	AS 250 R 050 A	AS 250 L 050 A
STAINLESS STEEL SCREW PART NO.	AS 250 R 050 S	AS 250 L 050 S
THREAD FORM		ACME
SCREW DIAMETER - TURNS/INCH		2 1/2" - 2
PITCH/LEAD		0.500 IN.
ROOT DIAMETER		1.934 IN.
SCREW WEIGHT (LB./FT.)		13.4
TORQUE TO RAISE 1 POUND		0.227IN.-LB.
MAXIMUM SCREW LENGTH		20 FEET*

\*12 feet stainless steel stock

### Nut and Flange Specifications



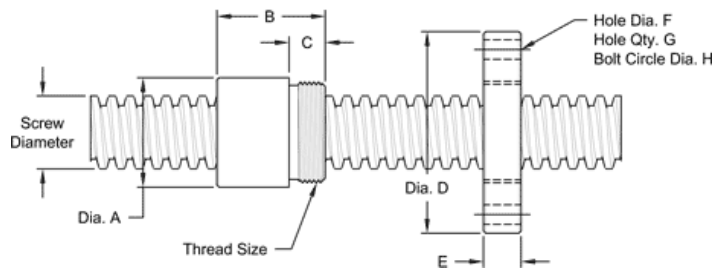
NUT SPECIFICATIONS	RH	LH
NUT PART NUMBER	AN 250 R 050 B	AN 250 L 050 B
NUT WITH FLANGE	AF 250 R 050	AF 250 L 050
DYNAMIC LOAD CAPACITY (LBS.)		40,000
STATIC LOAD CAPACITY (LBS.)		100,000
EFFICIENCY		36.0%
MATERIAL		BRONZE
NOMINAL DIAMETER "A"		3.38 IN.
NUT LENGTH "B"		3.38 IN.
THREAD LENGTH "C"		1.560 IN.
THREAD SIZE		3.137-12 UN
FLANGE PART NUMBER		FL-3137
FLANGE DIAMETER "D"		5.38 IN
FLANGE THICKNESS "E"		1.580 IN.
FLANGE HOLE DIAMETER "F"		0.656 IN.
NUMBER OF HOLES IN FLANGE "G"		6
FLANGE BOLT CIRCLE "H"		4.375 IN.
FLANGE MATERIAL		BLACK OXIDE COATED STEEL

**This 3 3/8"-1 1/2 single lead stub acme machine screw** is available in both alloy steel and stainless steel with a corresponding aluminum bronze nut. Choose from right-hand or left-hand threads.

MACHINE SCREW SPECIFICATIONS	RH	LH
ALLOY STEEL SCREW PART NO.	SS 338 R 067 A	SS 338 L 067 A
STAINLESS STEEL SCREW PART NO.	SS 338 R 067 S	SS 338 L 067 S
THREAD FORM	STUB ACME	
SCREW DIAMETER - TURNS/INCH	3 3/8" -1 1/2	
PITCH/LEAD	0.667 IN.	
ROOT DIAMETER	2.902 IN.	
SCREW WEIGHT (LB./FT.)	20.1	
TORQUE TO RAISE 1 POUND	0.314 IN.-LB.	
MAXIMUM SCREW LENGTH	20 FEET*	

\* 12 feet for stainless steel stock

### Nut and Flange Specifications



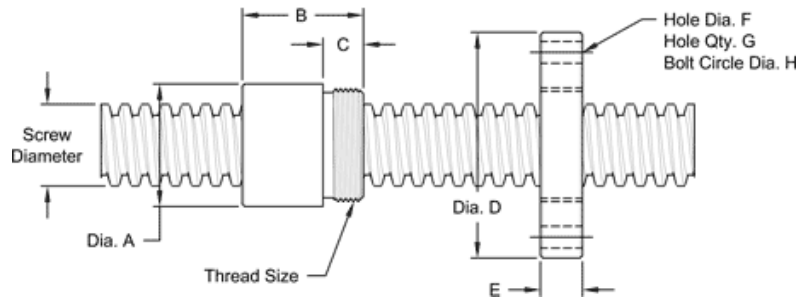
NUT SPECIFICATIONS	RH	LH
NUT PART NUMBER	SN 338 R 067 B	SN 338 L 067 B
NUT WITH FLANGE	SF 338 R 067	SF 338 L 067
DYNAMIC LOAD CAPACITY (LBS.)	40,000	
STATIC LOAD CAPACITY (LBS.)	100,000	
EFFICIENCY	34.7%	
MATERIAL	BRONZE	
NOMINAL DIAMETER "A"	4.50 IN.	
NUT LENGTH "B"	4.50 IN.	
THREAD LENGTH "C"	2.00 IN.	
THREAD SIZE	4.325-12 UN	
FLANGE PART NUMBER	FL-4325	
FLANGE DIAMETER "D"	7.38 IN.	
FLANGE THICKNESS "E"	2.020 IN.	
FLANGE HOLE DIAMETER "F"	0.781 IN.	
NUMBER OF HOLES IN FLANGE "G"	6	
FLANGE BOLT CIRCLE "H"	6.250 IN.	
FLANGE MATERIAL	BLACK OXIDE COATED STEEL	

**This 3 1/2"-1 1/2 single lead stub acme machine screw** is available in both alloy steel and stainless steel with a corresponding aluminum bronze nut. This is available with right-hand or left-hand threads.

MACHINE SCREW SPECIFICATIONS	RH	LH
ALLOY STEEL SCREW PART NO.	AS 350 R 067 A	AS 350 L 067 A
STAINLESS STEEL SCREW PART NO.	AS 350 R 067 S	AS 350 L 067 S
THREAD FORM		ACME
SCREW DIAMETER - TURNS/INCH		3 1/2" - 1 1/2
PITCH/LEAD		0.667 IN.
ROOT DIAMETER		2.760 IN.
SCREW WEIGHT (LB./FT.)		30
TORQUE TO RAISE 1 POUND		0.313 IN.-LB.
MAXIMUM SCREW LENGTH		20 FEET*

\*12 feet for stainless steel stock

### Nut and Flange Specifications



NUT SPECIFICATIONS	RH	LH
NUT PART NO.	AN 350 R 067 B	AN 350 L 067 B
NUT WITH FLANGE PART NO.	AF 350 R 067	AF 350 L 067
DYNAMIC LOAD CAPACITY (LBS.)		60,000
STATIC LOAD CAPACITY (LBS.)		200,000
EFFICIENCY		34.8%
MATERIAL		BRONZE
NOMINAL DIAMETER "A"		4.50 IN.
NUT LENGTH "B"		4.50 IN.
THREAD LENGTH "C"		2.000 IN.
THREAD SIZE		4.325-12 UN
FLANGE PART NUMBER		FL-4325
FLANGE DIAMETER "D"		7.38 IN
FLANGE THICKNESS "E"		2.020 IN.
FLANGE HOLE DIAMETER "F"		0.781 IN.
NUMBER OF HOLES IN FLANGE "G"		6
FLANGE BOLT CIRCLE "H"		6.250 IN.
FLANGE MATERIAL		BLACK OXIDE COATED STEEL

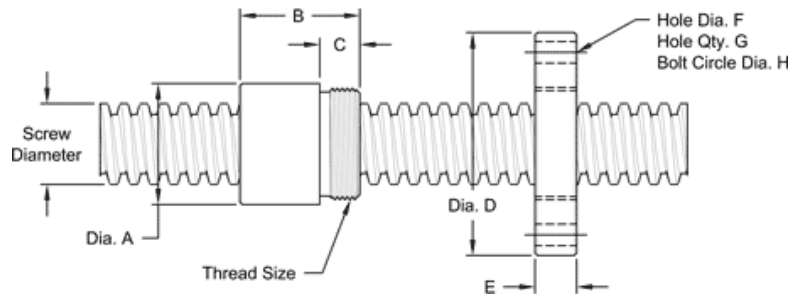


**This 3 3/4"-1 1/2 single lead acme machine screw** is available in both alloy steel and stainless steel with a corresponding aluminum bronze nut. Choose right-hand or left-hand threads.

MACHINE SCREW SPECIFICATIONS	RH	LH
ALLOY STEEL SCREW PART NO.	AS 375 R 067 A	AS 375 L 067 A
STAINLESS STEEL SCREW PART NO.	AS 375 R 067 S	AS 375 L 067 S
THREAD FORM	ACME	
SCREW DIAMETER - TURNS/INCH	3 3/4" - 1 1/2	
PITCH/LEAD	0.667 IN.	
ROOT DIAMETER	3.009 IN.	
SCREW WEIGHT (LB./FT.)	38.3	
TORQUE TO RAISE 1 POUND	0.329 IN.-LB.	
MAXIMUM SCREW LENGTH	20 FEET*	

\*12 feet for stainless steel stock

### Nut and Flange Specifications



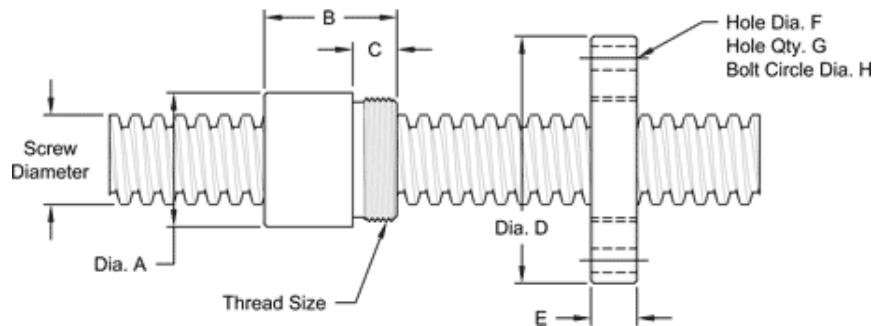
NUT SPECIFICATIONS	RH	LH
NUT PART NO.	AN 375 R 067 B	AN 375 L 067 B
NUT WITH FLANGE PART NO.	AF 375 R 067	AF 375 L 067
DYNAMIC LOAD CAPACITY (LBS.)	70,000	
STATIC LOAD CAPACITY (LBS.)	260,000	
EFFICIENCY	33.1%	
MATERIAL	BRONZE	
NOMINAL DIAMETER "A"	5.00 IN.	
NUT LENGTH "B"	5.50 IN.	
THREAD LENGTH "C"	2.000 IN.	
THREAD SIZE	4.750-12 UN	
FLANGE PART NUMBER	FL-4750	
FLANGE DIAMETER "D"	9.00 IN	
FLANGE THICKNESS "E"	2.020 IN.	
FLANGE HOLE DIAMETER "F"	1.063 IN.	
NUMBER OF HOLES IN FLANGE "G"	4	
FLANGE BOLT CIRCLE "H"	7.000 IN.	
FLANGE MATERIAL	BLACK OXIDE COATED STEEL	

**This 4 1/2"-1 1/2 single lead acme machine screw** is available in both alloy steel and stainless steel with a corresponding aluminum bronze nut. Choose right-hand or left-hand threads.

MACHINE SCREW SPECIFICATIONS	RH	LH
ALLOY STEEL SCREW PART NO.	AS 450 R 067 A	AS 450 L 067 A
STAINLESS STEEL SCREW PART NO.	AS 450 R 067 S	AS 450 L 067 S
THREAD FORM	ACME	
SCREW DIAMETER - TURNS/INCH	4 1/2" - 1 1/2	
PITCH/LEAD	0.067 IN.	
ROOT DIAMETER	3.757 IN.	
SCREW WEIGHT (LB/FT)	45.0	
TORQUE TO RAISE 1 POUND	0.378 IN.-LB.	
MAXIMUM SCREW LENGTH	20 FEET*	

\* 12 feet for stainless steel stock

### Nut and Flange Specifications



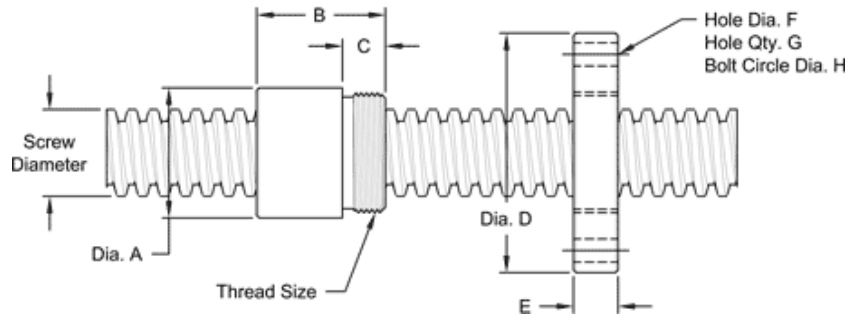
NUT SPECIFICATIONS	RH	LH
NUT PART NO.	AN 450 R 067 B	AN 450 L 067 B
NUT WITH FLANGE PART NO.	AF 450 R 067	AF 450 L 067
DYNAMIC LOAD CAPACITY (LBS)	100,000	
STATIC LOAD CAPACITY (LBS).	..320,000	
EFFICIENCY	28.9%	
MATERIAL	BRONZE	
NOMINAL DIAMETER "A"	6.00 IN.	
NUT LENGTH "B"	6.00 IN.	
THREAD LENGTH "C"	2.000 IN.	
THREAD SIZE	5.497-12 UN	
FLANGE PART NUMBER	FL-5497	
FLANGE DIAMETER "D"	9.75 IN	
FLANGE THICKNESS "E"	2.020 IN.	
FLANGE HOLE DIAMETER "F"	1.031 IN.	
NUMBER OF HOLES IN FLANGE "G"	6	
FLANGE BOLT CIRCLE "H"	8.000 IN.	
FLANGE MATERIAL	BLACK OXIDE COATED STEEL	

**This 5"-1 1/2 single lead acme machine screw** is available in both alloy steel and stainless steel with a corresponding aluminum bronze nut. This is available with right-hand or left-hand threads.

MACHINE SCREW SPECIFICATIONS	RH	LH
ALLOY STEEL SCREW PART NO.	AS 500 R 067 A	AS 500 L 067 A
STAINLESS STEEL SCREW PART NO.	AS 500 R 067 S	AS 500 L 067 S
THREAD FORM		ACME
SCREW DIAMETER - TURNS/INCH		5" - 1 1/2
PITCH/LEAD		0.667 IN.
ROOT DIAMETER		4.256 IN.
SCREW WEIGHT (LB./FT)		57.5
TORQUE TO RAISE 1 POUND		0.418 IN.-LB.
MAXIMUM SCREW LENGTH		20 FEET*

\*12 feet for stainless steel stock

### Nut and Flange Specifications



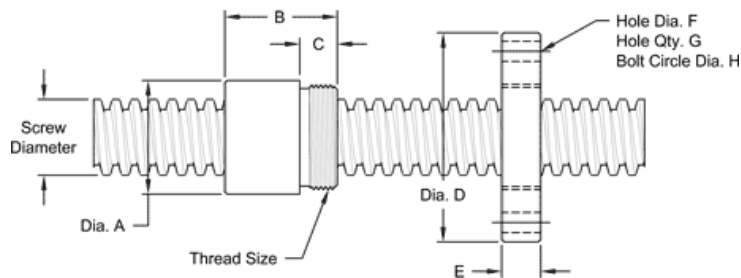
NUT SPECIFICATIONS	RH	LH
NUT PART NO.	AN 500 R 067 B	AN 500 L 067 B
NUT WITH FLANGE PART NO.	AF 500 R 067	AF 500 L 067
DYNAMIC LOAD CAPACITY (LBS)		150,000
STATIC LOAD CAPACITY (LBS.)		470,000
EFFICIENCY		26.7%
MATERIAL		BRONZE
NOMINAL DIAMETER "A"		7.50 IN.
NUT LENGTH "B"		7.50 IN.
THREAD LENGTH "C"		2.00 IN.
THREAD SIZE		7.066-8 UN
FLANGE PART NUMBER	FL-7066	
FLANGE DIAMETER "D"		12.00 IN
FLANGE THICKNESS "E"		2.020 IN.
FLANGE HOLE DIAMETER "F"		1.125 IN.
NUMBER OF HOLES IN FLANGE "G"		8
FLANGE BOLT CIRCLE "H"		10.000 IN.
FLANGE MATERIAL		BLACK OXIDE COATED STEEL

**This 6"-1 1/3 single lead acme machine screw** is available in both alloy steel and stainless steel with a corresponding aluminum bronze nut. This is available with right-hand or left-hand threads.

MACHINE SCREW SPECIFICATIONS	RH	LH
ALLOY STEEL SCREW PART NO.	AS 600 R 075 A	AS 600 L 075 A
STAINLESS STEEL SCREW PART NO.	AS 600 R 075 S	AS 600 L 075 S
THREAD FORM	ACME	
SCREW DIAMETER - TURNS/INCH	6" - 1 1/3	
PITCH/LEAD	0.750 IN.	
ROOT DIAMETER	5.169 IN.	
SCREW WEIGHT (LB./FT.)	87	
TORQUE TO RAISE 1 POUND	0.485 IN.-LB.	
MAXIMUM SCREW LENGTH	20 FEET*	

\*12 feet for stainless steel stock

### Nut and Flange Specifications



NUT SPECIFICATIONS	RH	LH
NUT PART NO.	AN 600 R 075 B	AN 600 L 075 B
NUT WITH FLANGE PART NO.	AF 600 R 075	AF 600 L 075
DYNAMIC LOAD CAPACITY (LBS.)	150,000	
STATIC LOAD CAPACITY (LBS.)	470,000	
EFFICIENCY	25.4%	
MATERIAL	BRONZE	
NOMINAL DIAMETER "A"	8.00 IN.	
NUT LENGTH "B"	7.00 IN.	
THREAD LENGTH "C"	2.000 IN.	
THREAD SIZE	7.847-8 UN	
FLANGE PART NUMBER	FL-7847	
FLANGE DIAMETER "D"	14.00 IN	
FLANGE THICKNESS "E"	2.020 IN.	
FLANGE HOLE DIAMETER "F"	1.125 IN.	
NUMBER OF HOLES IN FLANGE "G"	6	
FLANGE BOLT CIRCLE "H"	12.000 IN.	
FLANGE MATERIAL	BLACK OXIDE COATED STEEL	