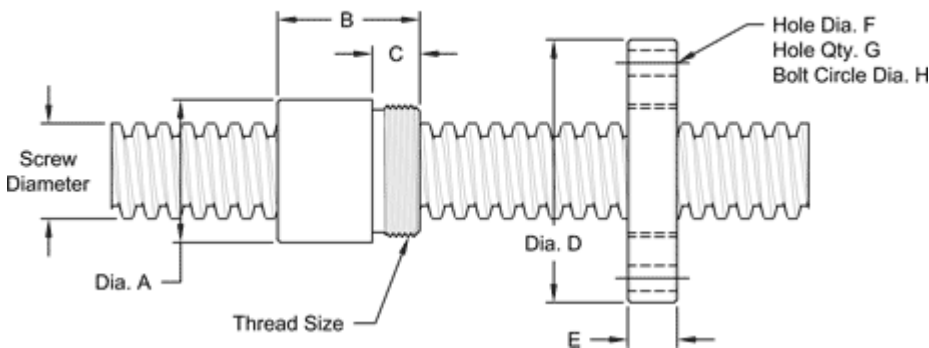


TR55 - 12 SINGLE LEAD TRAPEZOIDAL

This 55 mm. diameter single lead metric (trapezoidal) screw has a 12 mm lead. It is available in alloy steel or stainless steel material with corresponding aluminum bronze nuts. Choose from right-hand or left-hand threads.

METRIC SCREW SPECIFICATIONS	RH	LH
ALLOY STEEL SCREW PART NO.	TS 055 R 012 A	TS 055 L 012 A
STAINLESS STEEL SCREW PART NO.	TS 055 R 012 S	TS 055 L 009 S
THREAD FORM	TRAPEZOIDAL	
SCREW DIAMETER - TURNS/MM	TR 55 - 12	
LEAD	12 MM.	
ROOT DIAMETER	41.27 MM.	
SCREW WEIGHT (LB/FT)	14.7 KG./M. (9.9 LB./FT.)	
TORQUE TO RAISE 1 KN	5.044 NM (46.6 IN.-LB.)	
MAXIMUM SCREW LENGTH	3.66 M. (12 FT.)	

Nut and Flange Specifications



NUT SPECIFICATIONS	RH	LH
NUT PART NO.	TN 055 R 012 B	TN 055 L 012 B
NUT WITH FLANGE PART NO.	TF 055 R 012	TF 055 L 012
DYNAMIC LOAD CAPACITY (LBS)	100 KN (22,481 LB.)	
STATIC LOAD CAPACITY KG. (LBS)	173.5 KN (39,000 LB.)	
EFFICIENCY	38.2%	
MATERIAL	BRONZE	
NOMINAL DIAMETER "A"	80 MM.	
NUT LENGTH "B"	75 MM.	
THREAD LENGTH "C"	25 MM.	
THREAD SIZE	M72 X 2.0	
FLANGE PART NO.	FL-7200	
FLANGE DIAMETER "D"	142 MM.	
FLANGE THICKNESS "E"	26 MM.	
FLANGE HOLE DIAMETER "F"	17 MM.	
NUMBER OF HOLES IN FLANGE "G"	4	
FLANGE BOLT CIRCLE "H"	112 MM.	
FLANGE MATERIAL	BLACK OXIDE COATED STEEL	